

Louisa County, Iowa
Horizontal Datum: **NAD 83(2011)** - Vertical Datum: **NAVD 1988**
Iowa State Plane South Zone (1402)
Iowa Regional Coordinate System Zone 14 Burlington TM
US Survey Feet
2015

Point Name: **80**

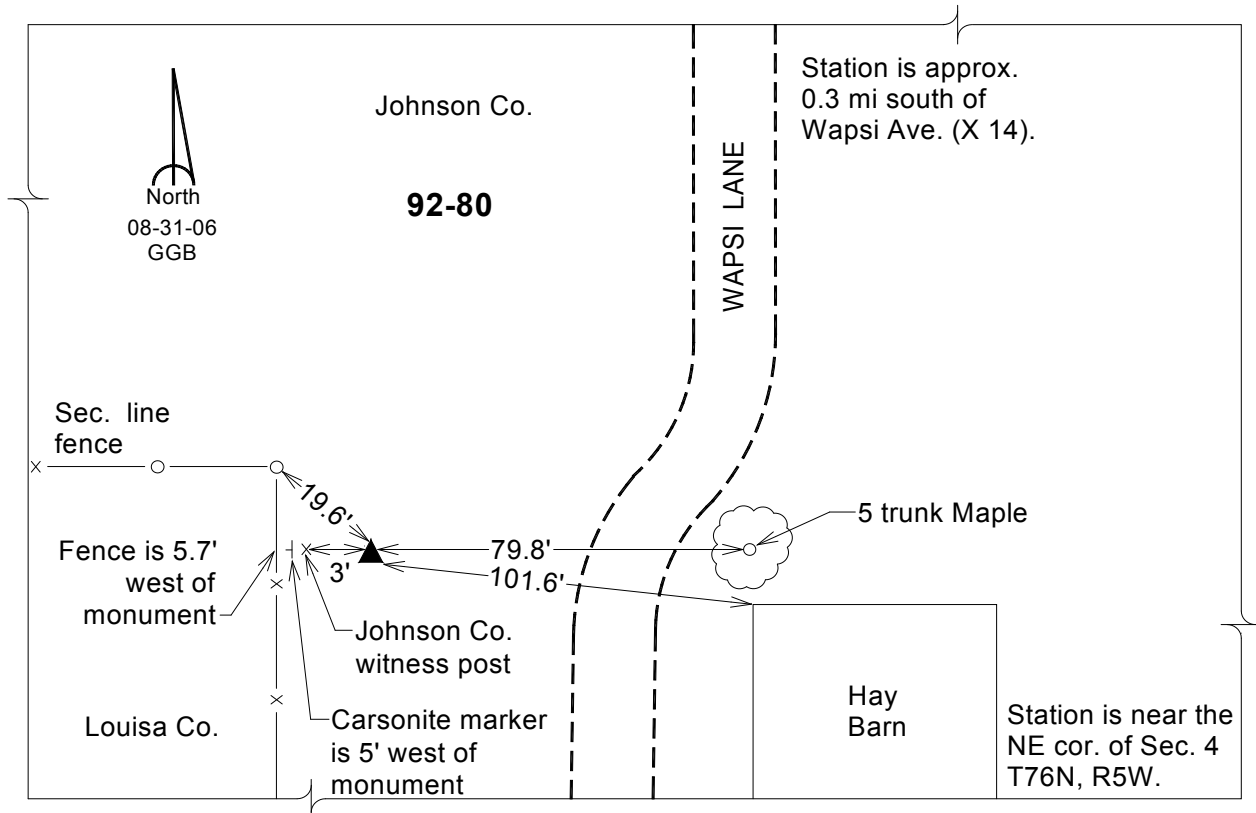
Designation: 92-80 Johnson Co GPS Control Pt. (set by ASI in 1992)

NAD 83(NA2011) Latitude: **N41°25'24.29825"** Longitude: **W91°25'36.66284"**
NAVD 88 Ortho Height: **647.890** sft Ellip. Ht: **540.221**sft **Geoid12A**

Iowa South Zone (1402) Northing: **525375.157**sft Easting: **2208918.614**sft
Mapping Angle: **1°21'56"** Combination Scale Factor: **0.999930115**

IaRCS Zone 14 Northing: **6627578.537**sft Easting: **24451496.109**sft
Mapping Angle: **-00° 07' 01"** Combination Scale Factor: **0.999994813**

Monument Type: Berntsen Top Security Rod Monument with a 2-1/2" dia. domed survey cap and permanent magnet encased in a 6" dia. PVC pipe with a NGS style aluminum access cover.



This document was prepared by Dan Corbin, Inc. on February 26, 2015 for Louisa County, Iowa