

Louisa County, Iowa
Horizontal Datum: **NAD 83(2011)** - Vertical Datum: **NAVD 1988**
Iowa State Plane South Zone (1402)
Iowa Regional Coordinate System Zone 14 Burlington TM
US Survey Feet
2015

Point Name: **81**

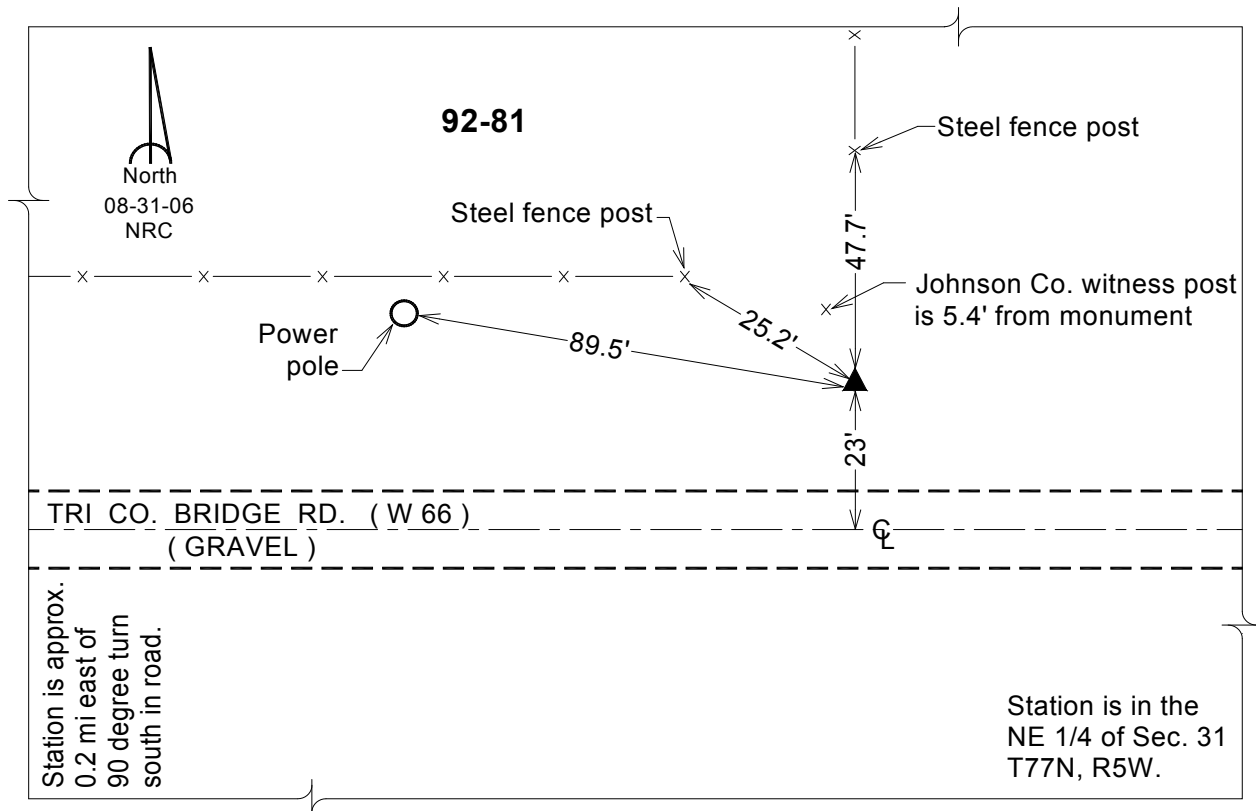
Designation: 92-81 Johnson Co GPS Control Pt. (set by ASI in 1992)

NAD 83(NA2011) Latitude: **N41°25'51.84510"** Longitude: **W91°28'10.29538"**
NAVD 88 Ortho Height: **617.150** sft Ellip. Ht: **509.555**sft **Geoid12A**

Iowa South Zone (1402) Northing: **527886.400**sft Easting: **2197153.092**sft
Mapping Angle: **1°20'15"** Combination Scale Factor: **0.999932105**

IaRCS Zone 14 Northing: **6630393.549**sft Easting: **24439798.741**sft
Mapping Angle: **-00° 08' 43"** Combination Scale Factor: **0.999997735**

Monument Type: Berntsen Top Security Rod Monument with a 2-1/2" dia. domed survey cap and permanent magnet encased in a 6" dia. PVC pipe with a NGS style aluminum access cover.



This document was prepared by Dan Corbin, Inc. on February 26, 2015 for Louisa County, Iowa