

**Louisa County, Iowa**  
 Horizontal Datum: **NAD 83(2011)** - Vertical Datum: **NAVD 1988**  
 Iowa State Plane South Zone (1402)  
 Iowa Regional Coordinate System Zone 14 Burlington TM  
 US Survey Feet  
**2015**

Point Name: **127**

**Designation:** 96-127 Washington Co GPS Control Pt. (set by ASI in 1996)

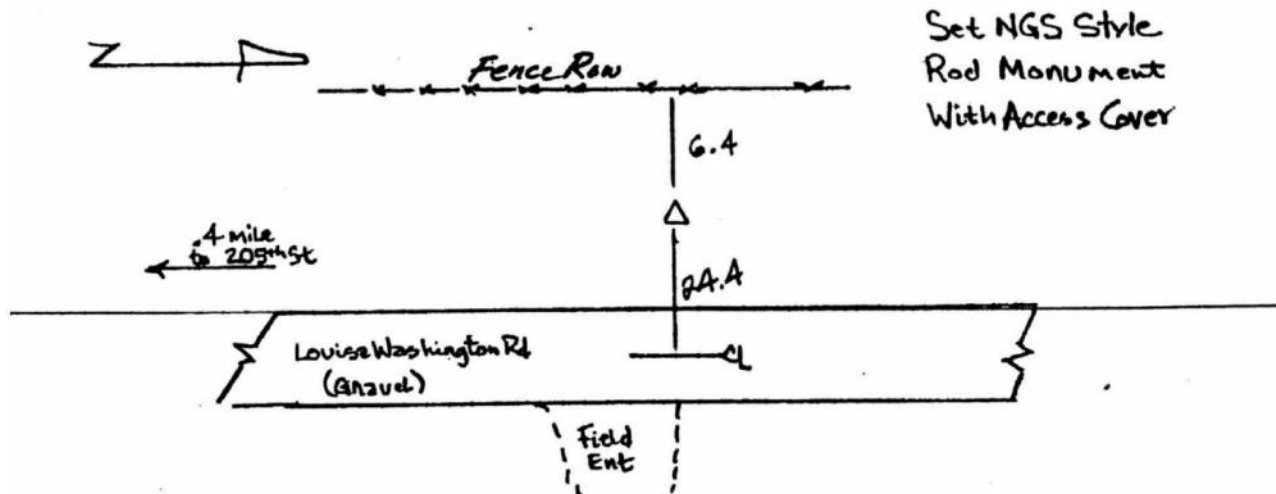
NAD 83(NA2011) Latitude: **N41°21'54.87129"** Longitude: **W91°29'03.97373"**  
 NAVD 88 Ortho Height: **697.740** sft Ellip. Ht: **590.031**sft **Geoid12A**

Iowa South Zone (1402) Northing: **503813.502**sft Easting: **2193621.180**sft  
 Mapping Angle: **1°19'40"** Combination Scale Factor: **0.999924319**

IaRCS Zone 14 Northing: **6606418.465**sft Easting: **24435644.854**sft  
 Mapping Angle: **-00° 09' 18"** Combination Scale Factor: **0.999994471**

**Monument Type:** Berntsen Top Security Rod Monument with a 2-1/2" dia. domed survey cap and permanent magnet encased in a 5" dia. PVC pipe with a NGS style aluminum access cover.

**To Reach:** 25 ft. West of Louisa-Washington Rd., 10 ft. North of field entrance to East. Near the S.E. corner of Sec 24, T76N, R6W.



127  
 RKE KRR

*This document was prepared by Dan Corbin, Inc. on February 26, 2015 for Louisa County, Iowa*