

Louisa County, Iowa
 Horizontal Datum: **NAD 83(2011)** - Vertical Datum: **NAVD 1988**
 Iowa State Plane South Zone (1402)
 Iowa Regional Coordinate System Zone 14 Burlington TM
 US Survey Feet
2015

Point Name: **153**

Designation: 96-153 Washington Co GPS Control Pt. (set by ASI in 1996)

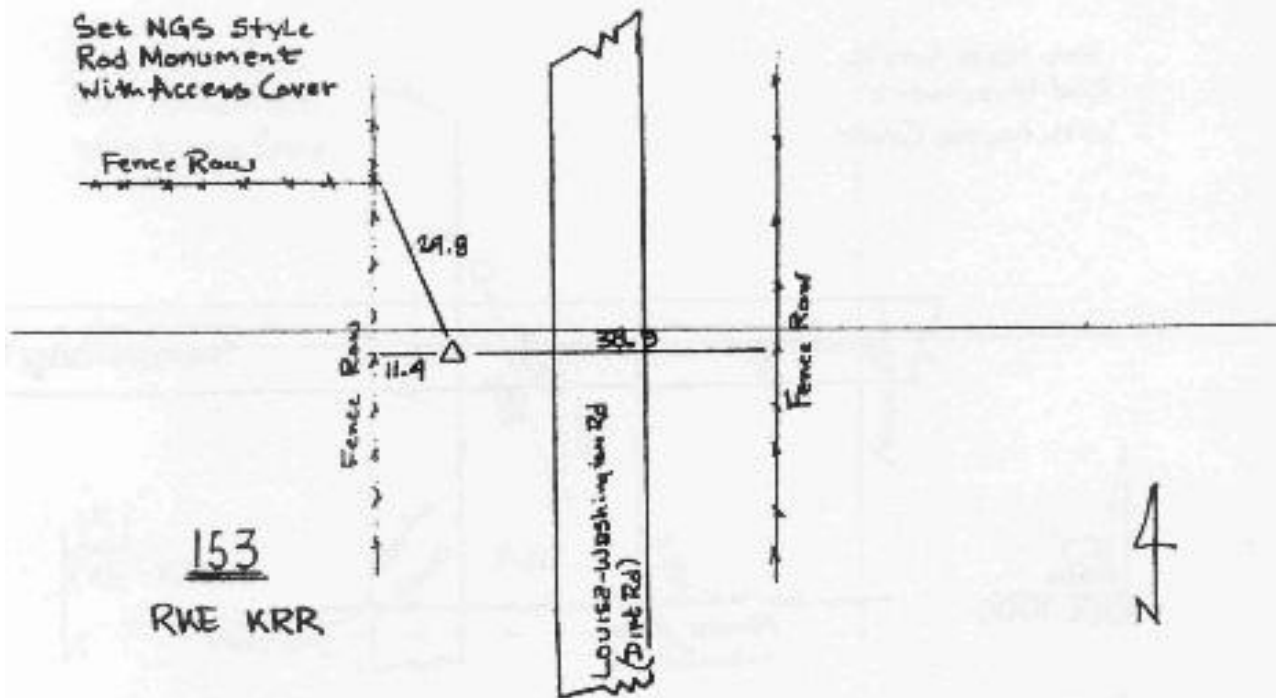
NAD 83(NA2011) Latitude: **N41°13'13.80981"** Longitude: **W91°29'09.23645"**
 NAVD 88 Ortho Height: **697.810** sft Ellip. Ht: **589.717**sft **Geoid12A**

Iowa South Zone (1402) Northing: **451082.624**sft Easting: **2194441.011**sft
 Mapping Angle: **1°19'36"** Combination Scale Factor: **0.999920290**

IaRCS Zone 14 Northing: **6553680.184**sft Easting: **24435100.266**sft
 Mapping Angle: **-00° 09' 20"** Combination Scale Factor: **0.999994566**

Monument Type: Berntsen Top Security Rod Monument with a 2-1/2" dia. domed survey cap and permanent magnet encased in a 5" dia. PVC pipe with a NGS style aluminum access cover.

To Reach: 25 ft. West of Louisa-Washington Rd., 30 ft. South of Section line fence. Near the N.E. corner of Sec 13, T74N, R6W



This document was prepared by Dan Corbin, Inc. on February 26, 2015 for Louisa County, Iowa