

**Louisa County, Iowa**  
Horizontal Datum: **NAD 83(2011)** - Vertical Datum: **NAVD 1988**  
Iowa State Plane South Zone (1402)  
Iowa Regional Coordinate System Zone 14 Burlington TM  
US Survey Feet  
**2015**

Point Name: **160**

**Designation:** 96-160 Washington Co GPS Control Pt. (set by ASI in 1996)

NAD 83(NA2011) Latitude: **N41°11'29.01087"** Longitude: **W91°29'10.08896"**

NAVD 88 Ortho Height: **730.060** sft Ellip. Ht: **621.896**sft **Geoid12A**

Iowa South Zone (1402) Northing: **440477.618**sft Easting: **2194621.423**sft

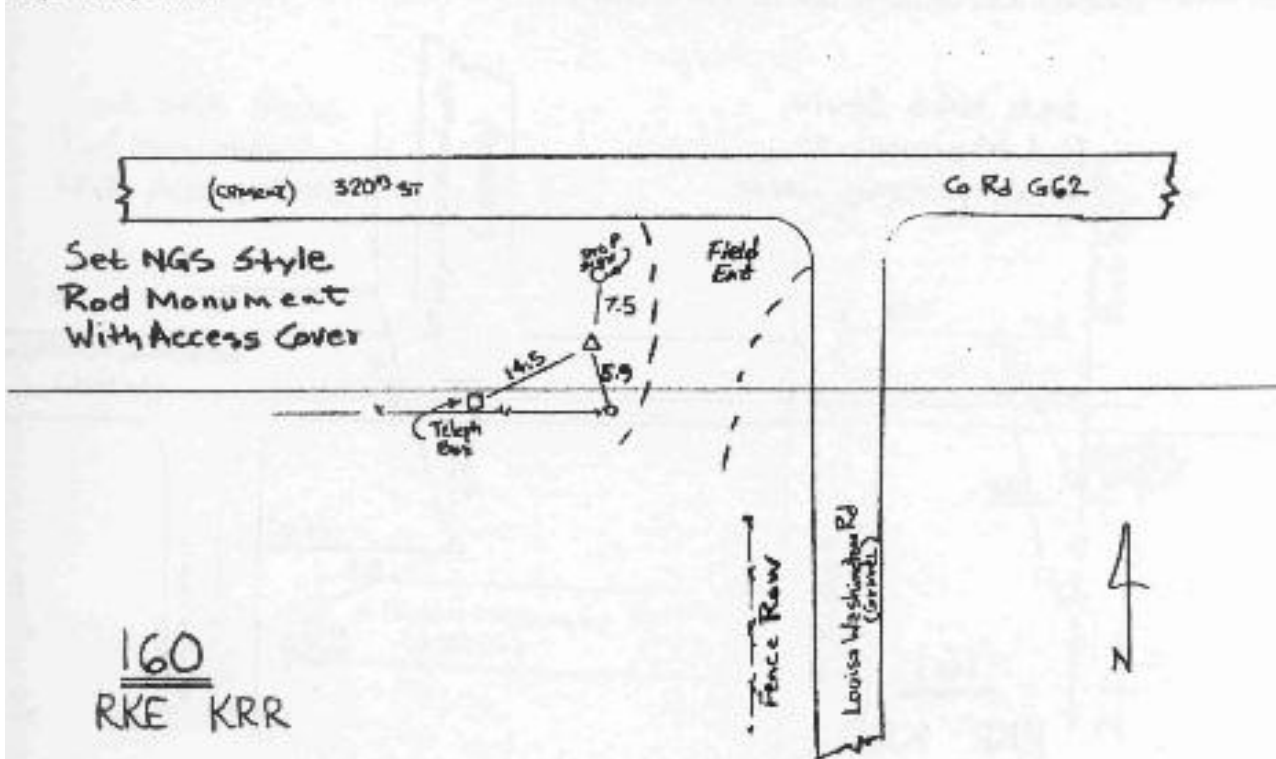
Mapping Angle: **1°19'36"** Combination Scale Factor: **0.999918710**

IaRCS Zone 14 Northing: **6543073.270**sft Easting: **24435006.317**sft

Mapping Angle: **-00° 09' 20"** Combination Scale Factor: **0.999993038**

**Monument Type:** Berntsen Top Security Rod Monument with a 2-1/2" dia. domed survey cap and permanent magnet encased in a 5" dia. PVC pipe with a NGS style aluminum access cover.

To Reach: 35 ft. South of G62, 45 ft. West of Louisa-Washington Rd. Near the N.E. corner of Sec 25, T74N, R6W.



*This document was prepared by Dan Corbin, Inc. on February 26, 2015 for Louisa County, Iowa*