

Louisa County, Iowa
 Horizontal Datum: **NAD 83(2011)** - Vertical Datum: **NAVD 1988**
 Iowa State Plane South Zone (1402)
 Iowa Regional Coordinate System Zone 14 Burlington TM
 US Survey Feet
2015

Point Name: **220**

Designation: 99-220 Des Moines Co GPS Control Pt. (set by ASI in 1999)

NAD 83(NA2011) Latitude: **N41°04'26.72549"** Longitude: **W91°18'42.75302"**
 NAVD 88 Ortho Height: **803.980** sft Ellip. Ht: **695.437**sft **Geoid12A**

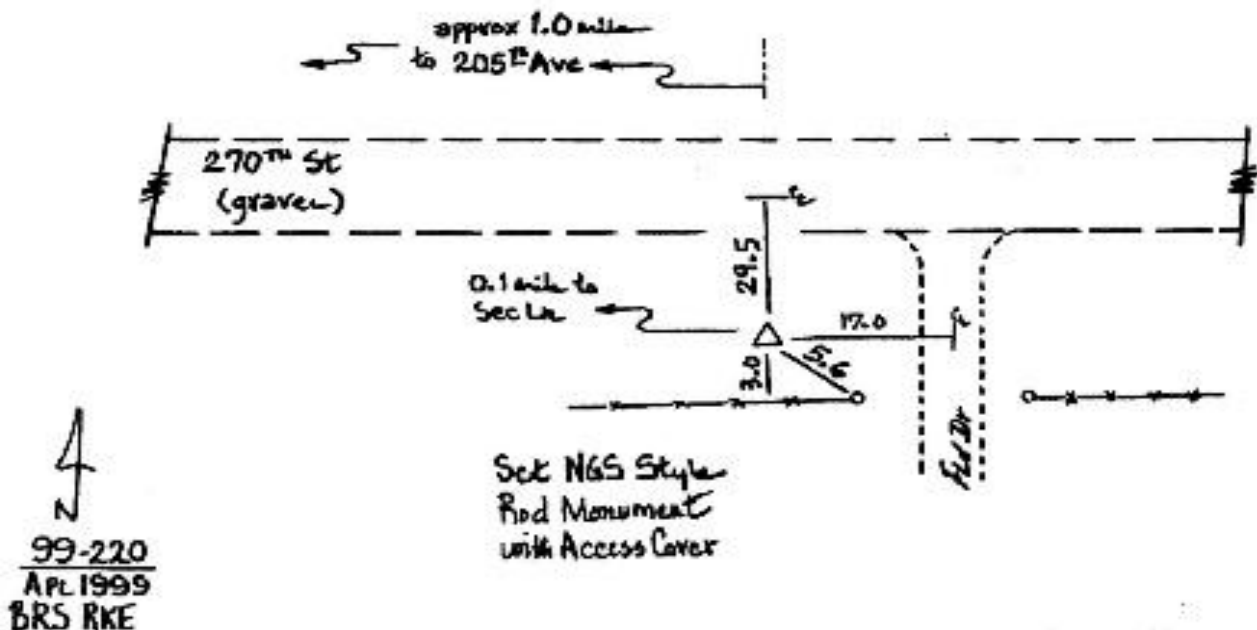
Iowa South Zone (1402) Northing: **398911.906**sft Easting: **2243642.117**sft
 Mapping Angle: **1°26'29"** Combination Scale Factor: **0.999917624**

IaRCS Zone 14 Northing: **6500250.637**sft Easting: **24482939.027**sft
 Mapping Angle: **-00° 02' 26"** Combination Scale Factor: **0.999985020**

Monument Type: Berntsen Top Security Rod Monument with a 2-1/2" dia. domed survey cap and permanent magnet encased in a 5" dia. PVC pipe with a NGS style aluminum access cover.

To Reach: 30ft S of 270th St, 0.1mi E of Sec line. 0.1mi E of NW cor of Sec 3 T72N R4W.

Date Printed July 30, 1999



This document was prepared by Dan Corbin, Inc. on February 26, 2015 for Louisa County, Iowa