

**Louisa County, Iowa**  
Horizontal Datum: **NAD 83(2011)** - Vertical Datum: **NAVD 1988**  
Iowa State Plane South Zone (1402)  
Iowa Regional Coordinate System Zone 14 Burlington TM  
US Survey Feet  
**2015**

Point Name: **244**

**Designation:** 99-244 Des Moines Co GPS Control Pt. (set by ASI in 1999)

NAD 83(NA2011) Latitude: **N41°04'23.91253"** Longitude: **W91°11'53.04836"**  
NAVD 88 Ortho Height: **747.670** sft Ellip. Ht: **639.098**sft Geoid12A

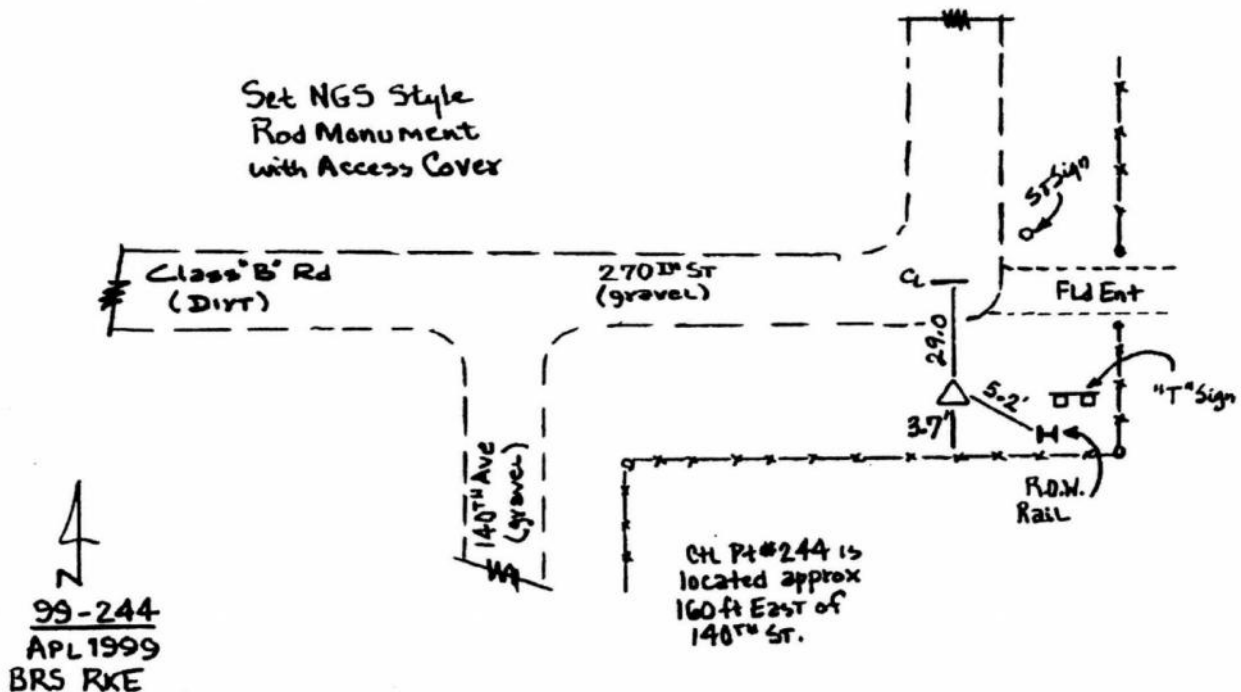
Iowa South Zone (1402) Northing: **399437.091**sft Easting: **2275016.955**sft  
Mapping Angle: **1°30'59"** Combination Scale Factor: **0.999920342**

IaRCS Zone 14 Northing: **6499964.144**sft Easting: **24514319.063**sft  
Mapping Angle: **00° 02' 03"** Combination Scale Factor: **0.999987621**

**Monument Type:** Berntsen Top Security Rod Monument with a 2-1/2" dia. domed survey cap and permanent magnet encased in a 5" dia. PVC pipe with a NGS style aluminum access cover.

**To Reach:** 30ft S of 270 St, 160ft E of 140th Av. Near the NW cor Sec 3 T72N R3W.

Date Printed July 30, 1999



*This document was prepared by Dan Corbin, Inc. on February 26, 2015 for Louisa County, Iowa*