

Louisa County, Iowa
Horizontal Datum: **NAD 83(2011)** - Vertical Datum: **NAVD 1988**
Iowa State Plane South Zone (1402)
Iowa Regional Coordinate System Zone 14 Burlington TM
US Survey Feet
2015

Point Name: **257**

Designation: 99-257 Des Moines Co GPS Control Pt. (set by ASI in 1999)

NAD 83(NA2011) Latitude: **N41°04'23.12654"** Longitude: **W91°07'37.85857"**
NAVD 88 Ortho Height: **714.540** sft Ellip. Ht: **605.972**sft Geoid**12A**

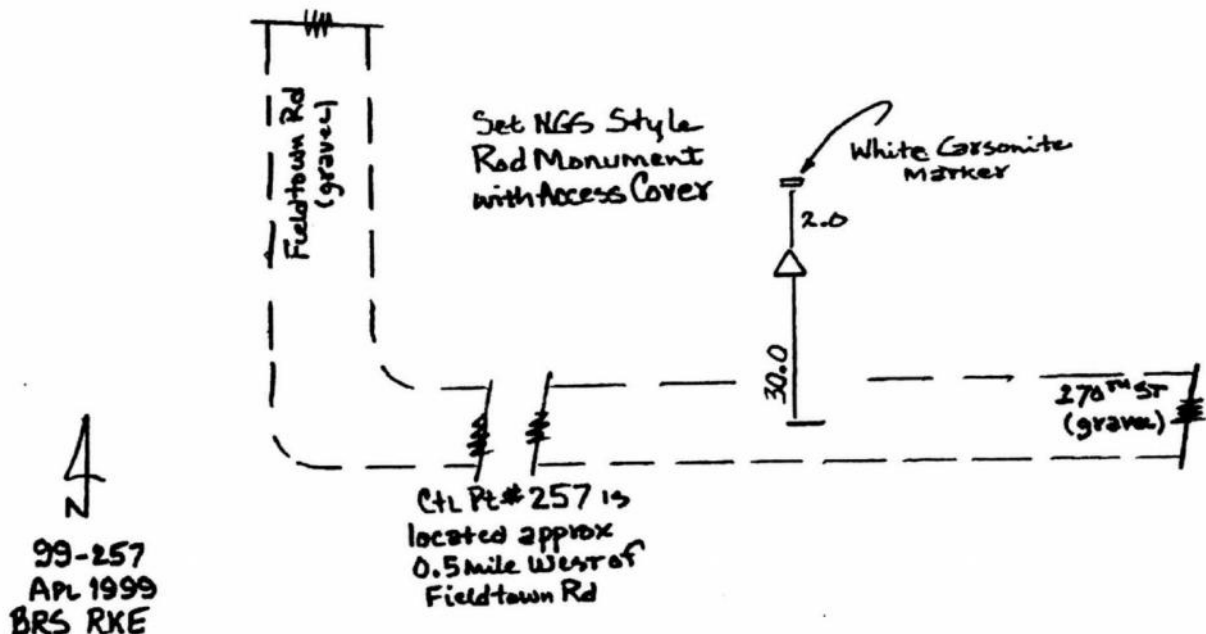
Iowa South Zone (1402) Northing: **399882.697**sft Easting: **2294556.338**sft
Mapping Angle: **1°33'47"** Combination Scale Factor: **0.999921931**

IaRCS Zone 14 Northing: **6499904.176**sft Easting: **24533864.761**sft
Mapping Angle: **00° 04' 51"** Combination Scale Factor: **0.999990284**

Monument Type: Berntsen Top Security Rod Monument with a 2-1/2" dia. domed survey cap and permanent magnet encased in a 5" dia. PVC pipe with a NGS style aluminum access cover.

To Reach: 30ft N of 270th St, 0.4mi E of N1/4 Sec 6. 0.4mi E of the N1/4 Sec 6 T72N R2W.

Date Printed July 30, 1999



This document was prepared by Dan Corbin, Inc. on February 26, 2015 for Louisa County, Iowa