

Louisa County, Iowa
Horizontal Datum: **NAD 83(2011)** - Vertical Datum: **NAVD 1988**
Iowa State Plane South Zone (1402)
Iowa Regional Coordinate System Zone 14 Burlington TM
US Survey Feet
2015

Point Name: **308**

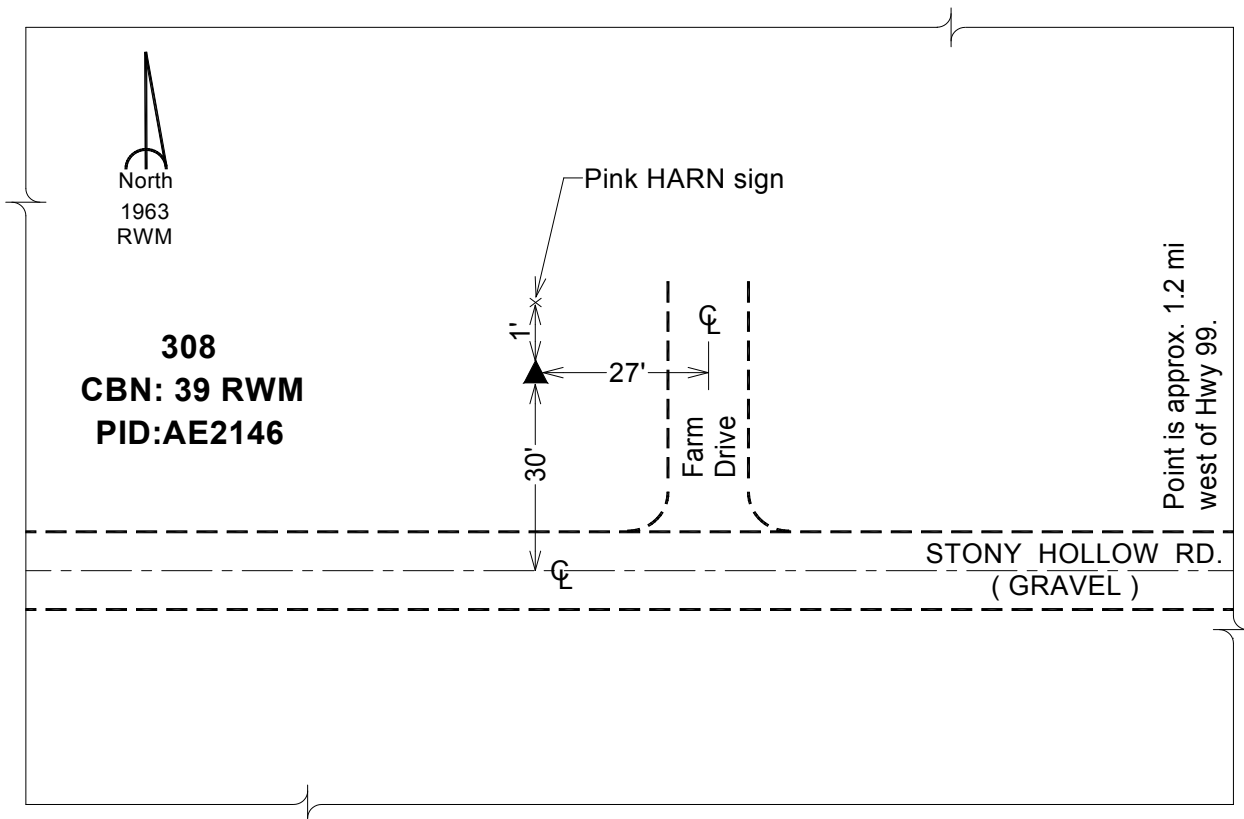
Designation: CBN horiz control station "39 RWM" PID: AE2146

NAD 83(NA2011) Latitude: **N40°54'21.33637"** Longitude: **W91°04'34.60295"**
NAVD 88 Ortho Height: **708.270** sft Ellip. Ht: **599.495**sft **Geoid12A**

Iowa South Zone (1402) Northing: **339390.010**sft Easting: **2310282.891**sft
Mapping Angle: **1°35'47"** Combination Scale Factor: **0.999932943**

IaRCS Zone 14 Northing: **6439020.943**sft Easting: **24548021.920**sft
Mapping Angle: **00° 06' 50"** Combination Scale Factor: **0.999991918**

Monument Type: The station is a standard USGS bench mark disk stamped "39 RWM 1963" and set in a prefabricated concrete post imbedded in the ground.



This document was prepared by Dan Corbin, Inc. on February 26, 2015 for Louisa County, Iowa