

Louisa County, Iowa
 Horizontal Datum: **NAD 83(2011)** - Vertical Datum: **NAVD 1988**
 Iowa State Plane South Zone (1402)
 Iowa Regional Coordinate System Zone 14 Burlington TM
 US Survey Feet
2015

Point Name: **435**

Designation: 2000-135 Muscatine Co GPS Control Pt. (set by ASI in 2000)

NAD 83(NA2011) Latitude: **N41°24'04.66686"** Longitude: **W91°22'06.71270"**
 NAVD 88 Ortho Height: **612.940** sft Ellip. Ht: **505.135**sft **Geoid12A**

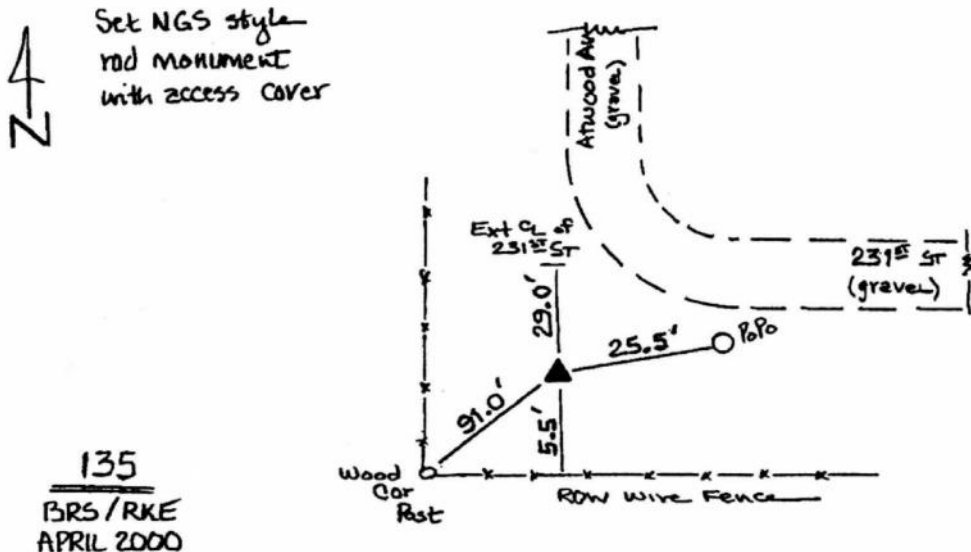
Iowa South Zone (1402) Northing: **517704.537**sft Easting: **2225105.385**sft
 Mapping Angle: **1°24'14"** Combination Scale Factor: **0.999930368**

IaRCS Zone 14 Northing: **6619491.186**sft Easting: **24467480.046**sft
 Mapping Angle: **-00° 04' 42"** Combination Scale Factor: **0.999995013**

Monument Type: Berntsen Top Security Rod Monument with a 2-1/2" dia. domed survey cap and permanent magnet encased in a 5" dia. PVC pipe with a NGS style aluminum access cover.

To Reach: 20ft W of extended CL of Atwood Av, 30ft S of extended CL of 231st St., near the W 1/4 cor Sec 7 T76N R4W.

Date Printed August 9, 2000



This document was prepared by Dan Corbin, Inc. on February 26, 2015 for Louisa County, Iowa