

**Louisa County, Iowa**  
 Horizontal Datum: **NAD 83(2011)** - Vertical Datum: **NAVD 1988**  
 Iowa State Plane South Zone (1402)  
 Iowa Regional Coordinate System Zone 14 Burlington TM  
 US Survey Feet  
**2015**

Point Name: **446**

**Designation:** 2000-146 Muscatine Co GPS Control Pt. (set by ASI in 2000)

NAD 83(NA2011) Latitude: **N41°20'21.89765"** Longitude: **W91°22'10.98097"**  
 NAVD 88 Ortho Height: **604.370** sft Ellip. Ht: **496.431**sft **Geoid12A**

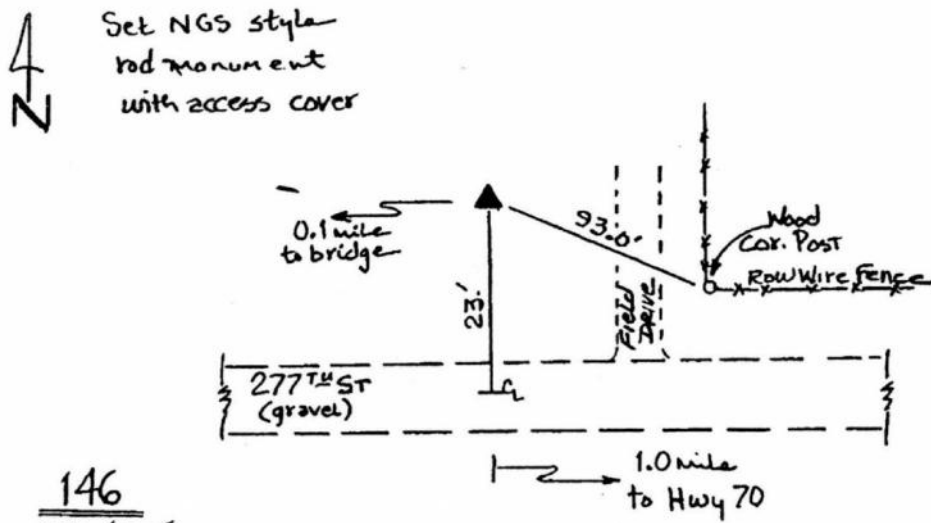
Iowa South Zone (1402) Northing: **495156.880**sft Easting: **2225332.342**sft  
 Mapping Angle: **1°24'12"** Combination Scale Factor: **0.999927596**

IaRCS Zone 14 Northing: **6596943.705**sft Easting: **24467123.622**sft  
 Mapping Angle: **-00° 04' 45"** Combination Scale Factor: **0.999995456**

**Monument Type:** Berntsen Top Security Rod Monument with a 2-1/2" dia. domed survey cap and permanent magnet encased in a 5" dia. PVC pipe with a NGS style aluminum access cover.

**To Reach:** 20ft N of 277th St., 80ft W of section line fence to N, near the SE cor Sec 36 T76N R5W.

Date Printed August 9, 2000



146  
 BRS/RKE  
 APRIL 2000

*This document was prepared by Dan Corbin, Inc. on February 26, 2015 for Louisa County, Iowa*