

**Louisa County, Iowa**  
 Horizontal Datum: **NAD 83(2011)** - Vertical Datum: **NAVD 1988**  
 Iowa State Plane South Zone (1402)  
 Iowa Regional Coordinate System Zone 14 Burlington TM  
 US Survey Feet  
**2015**

Point Name: **447**

**Designation:** 2000-147 Muscatine Co GPS Control Pt. (set by ASI in 2000)

NAD 83(NA2011) Latitude: **N41°20'34.58123"** Longitude: **W91°15'13.67642"**  
 NAVD 88 Ortho Height: **685.380** sft Ellip. Ht: **577.347**sft **Geoid12A**

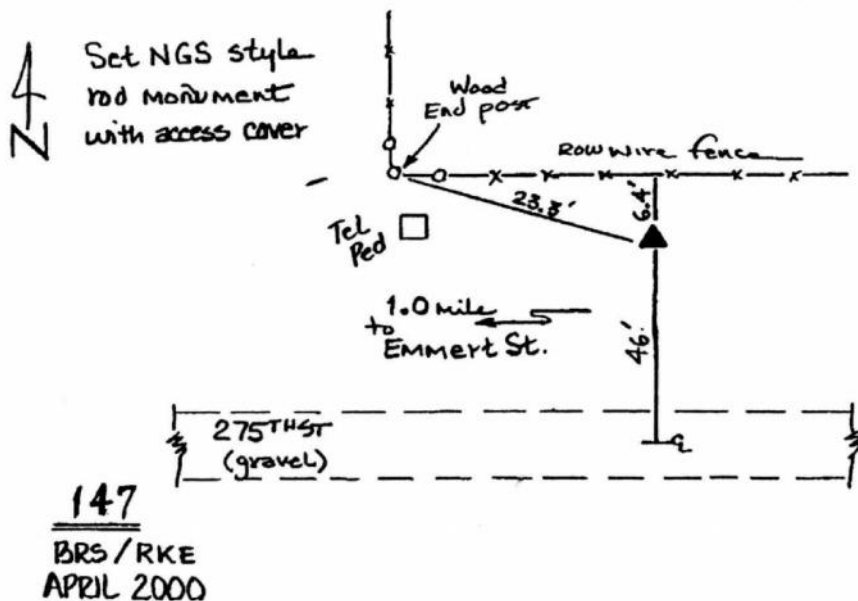
Iowa South Zone (1402) Northing: **497240.839**sft Easting: **2257120.099**sft  
 Mapping Angle: **1°28'46"** Combination Scale Factor: **0.999923886**

IaRCS Zone 14 Northing: **6598204.822**sft Easting: **24498956.783**sft  
 Mapping Angle: **-00° 00' 09"** Combination Scale Factor: **0.999990347**

**Monument Type:** Berntsen Top Security Rod Monument with a 2-1/2" dia. domed survey cap and permanent magnet encased in a 5" dia. PVC pipe with a NGS style aluminum access cover.

**To Reach:** 45ft N of 275th St., 20ft E of N/S section line fence, near the W 1/4 cor Sec 31 T76N R3W.

Date Printed August 9, 2000



*This document was prepared by Dan Corbin, Inc. on February 26, 2015 for Louisa County, Iowa*