

Louisa County, Iowa
 Horizontal Datum: **NAD 83(2011)** - Vertical Datum: **NAVD 1988**
 Iowa State Plane South Zone (1402)
 Iowa Regional Coordinate System Zone 14 Burlington TM
 US Survey Feet
2015

Point Name: **448**

Designation: 2000-148 Muscatine Co GPS Control Pt. (set by ASI in 2000)

NAD 83(NA2011) Latitude: **N41°20'17.13022"** Longitude: **W91°08'07.44179"**
 NAVD 88 Ortho Height: **545.870** sft Ellip. Ht: **437.698**sft **Geoid12A**

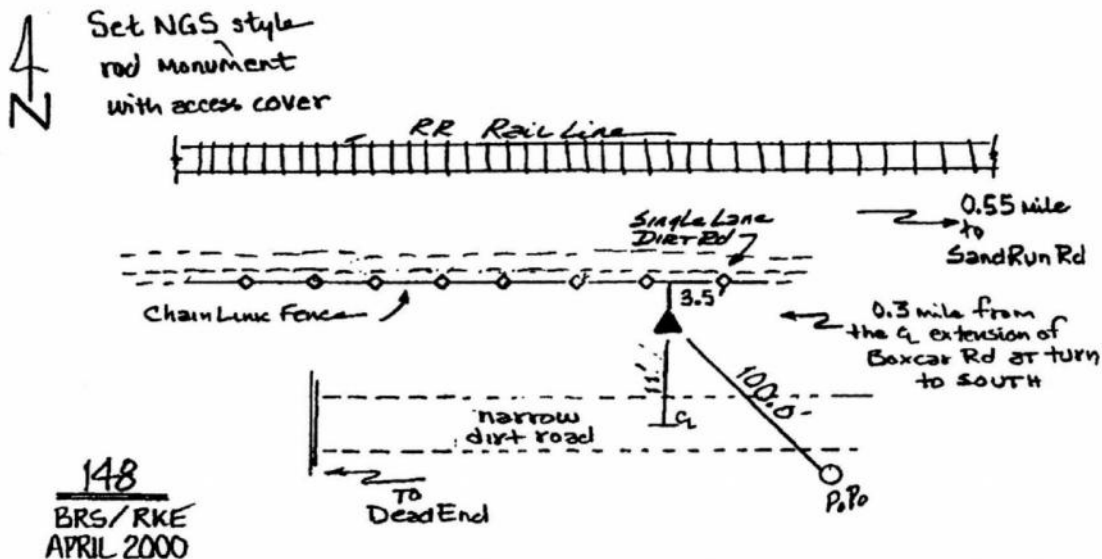
Iowa South Zone (1402) Northing: **496336.843**sft Easting: **2289667.082**sft
 Mapping Angle: **1°33'27"** Combination Scale Factor: **0.999930343**

IaRCS Zone 14 Northing: **6596459.267**sft Easting: **24531471.678**sft
 Mapping Angle: **00° 04' 33"** Combination Scale Factor: **0.999998166**

Monument Type: Berntsen Top Security Rod Monument with a 2-1/2" dia. domed survey cap and permanent magnet encased in a 5" dia. PVC pipe with a NGS style aluminum access cover.

To Reach: 10ft N of extended CL of Box Car Rd along a dirt path, approx. 0.55 mi W of Sand Run Rd, in the SW 1/4 of Sec 31 T76N R2W.

Date Printed August 9, 2000



This document was prepared by Dan Corbin, Inc. on February 26, 2015 for Louisa County, Iowa