

Louisa County, Iowa
 Horizontal Datum: **NAD 83(2011)** - Vertical Datum: **NAVD 1988**
 Iowa State Plane South Zone (1402)
 Iowa Regional Coordinate System Zone 14 Burlington TM
 US Survey Feet
2015

Point Name: **503**

Designation: NGS 1st order vertical control station "D 8" PID: MG0416

NAD 83(NA2011) Latitude: **N41°21'14.80924"** Longitude: **W91°29'04.50804"**
 NAVD 88 Ortho Height: **683.400** sft Ellip. Ht: **575.669**sft Geoid12A

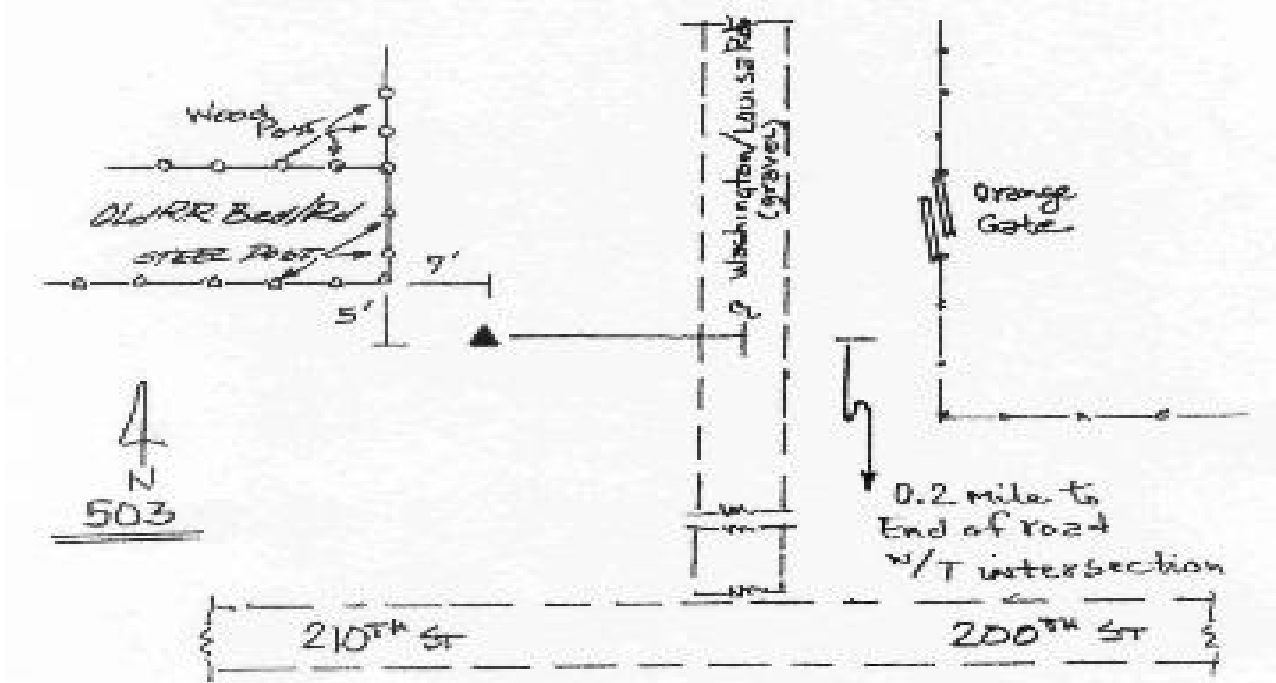
Iowa South Zone (1402) Northing: **499758.980**sft Easting: **2193674.390**sft
 Mapping Angle: **1°19'39"** Combination Scale Factor: **0.999924467**

IaRCS Zone 14 Northing: **6602363.638**sft Easting: **24435593.141**sft
 Mapping Angle: **-00° 09' 18"** Combination Scale Factor: **0.999995167**

Monument Type: The station is a CGS bench mark disk stamped "683.575 D 8 1930" and set in the top of a concrete post.

To Reach: ****See the current NGS data sheet for complete station description****

Date Printed: August 9, 2000



This document was prepared by Dan Corbin, Inc. on February 26, 2015 for Louisa County, Iowa