

**Louisa County, Iowa**  
Horizontal Datum: **NAD 83(2011)** - Vertical Datum: **NAVD 1988**  
Iowa State Plane South Zone (1402)  
Iowa Regional Coordinate System Zone 14 Burlington TM  
US Survey Feet  
**2015**

Point Name: **507**

**Designation:** USGS 3rd order vertical control station "4 DRL 1964"

NAD 83(NA2011) Latitude: **N41°16'21.55732"** Longitude: **W91°09'31.63952"**  
NAVD 88 Ortho Height: **696.810** sft Ellip. Ht: **588.543**sft Geoid**12A**

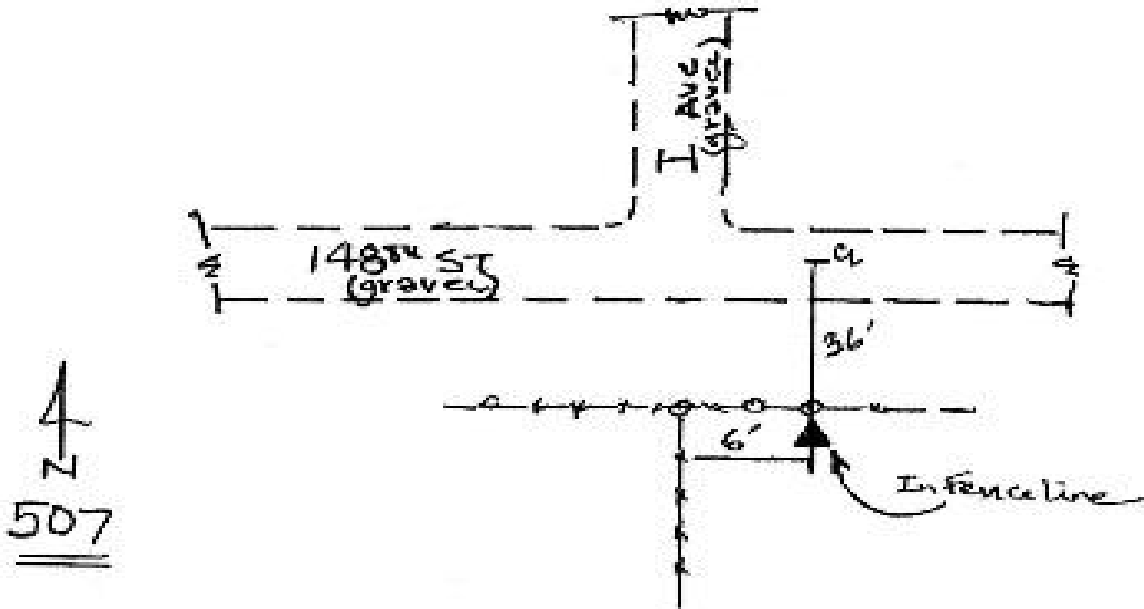
Iowa South Zone (1402) Northing: **472329.793**sft Easting: **2283888.550**sft  
Mapping Angle: **1°32'32"** Combination Scale Factor: **0.999921069**

IaRCS Zone 14 Northing: **6572608.047**sft Easting: **24525073.775**sft  
Mapping Angle: **00° 03' 37"** Combination Scale Factor: **0.999990527**

**Monument Type:** The station is a USGS standard bench mark disk set in the top of a concrete post..

**To Reach:** \*\*\*\*See the USGS data sheet for complete station description\*\*\*\*

Date Printed August 9, 2000



*This document was prepared by Dan Corbin, Inc. on February 26, 2015 for Louisa County, Iowa*