

Mahaska County Control

GPS Metric (M) to English (ft)
3.2808 conv. factor



<u>Name</u>	<u>Code</u>	<u>Northing</u>	<u>Easting</u>	<u>Height</u>	<u>Elevation</u>
L87	Harn	534174.531	1874183.722	1054.023	864.186
LOV	Harn	414929.026	1803761.564	832.208	937.446
1	CP	537164.564	1830645.386	752.455	857.772
2	CP	538298.897	1859709.981	784.620	889.999
3	CP	540718.628	1894523.485	751.244	856.653
4	CP	543576.468	1921393.260	775.850	881.203
5	CP	511563.763	1919295.824	709.237	814.960
6	CP	509085.998	1894286.450	708.059	813.760
7	CP	511490.024	1864652.736	727.928	833.504
8	CP	506457.188	1828699.364	762.914	868.300
9	CP	475354.676	1821105.690	765.690	871.121
10	CP	487555.216	1856762.215	742.954	848.644
11	CP	465900.384	1886982.566	728.088	834.156
12	CP	473864.379	1900095.460	729.791	835.869
13	CP	480725.854	1926357.120	715.188	821.276
14	CP	442956.362	1892721.620	748.508	854.767
15	CP	451852.757	1862464.773	726.605	832.592
16	CP	448989.655	1834632.553	703.948	809.629

MAHASKA COUNTY CONTROL

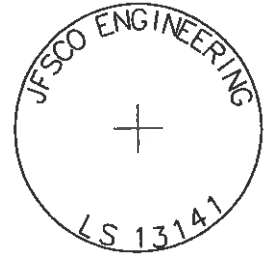
Project name Mahaska Final Coord
Coordinate Units Meters
Distance Units Meters
Height Units Meters
Date printed 1/12/01 2:49:01 PM
Coordinate System US State Plane 1983 **Zone** Iowa South 1402
Datum NAD 1983 (Conus) **Geoid model** GEOID99 (Conus)

NAME	CODE	NORTHING	EASTING	HEIGHT	ELEVATION	COMBINATION FACTOR	GRID FACTOR	ELEV FACTOR
L87	HARN	162818.377m	571258.145m	231.270m	263.407m	0.99992261	0.9999588107	0.99996379
LOV	HARN	126471.905m	549793.192m	253.660m	285.737m	0.99990927	0.9999489816	0.99996029
1	CP	163729.750m	558078.940m	229.351m	261.452m	0.99992366	0.9999595621	0.99996410
2	CP	164075.499m	566846.495m	239.155m	271.275m	0.99992233	0.9999597639	0.99996256
3	CP	164813.042m	577457.780m	228.982m	261.111m	0.99992440	0.9999602428	0.99996415
4	CP	165684.122m	585647.787m	236.482m	268.594m	0.99992383	0.9999608467	0.99996298
5	CP	155926.531m	585008.481m	216.178m	248.403m	0.99992053	0.9999543701	0.99996616
6	CP	155171.299m	577385.531m	215.819m	248.037m	0.99992023	0.9999540112	0.99996621
7	CP	155904.055m	568353.065m	221.875m	254.055m	0.99991972	0.9999544537	0.99996527
8	CP	154370.028m	557394.344m	232.539m	264.661m	0.99991729	0.9999536910	0.99996360
9	CP	144889.867m	555079.764m	233.385m	265.521m	0.99991341	0.9999499486	0.99996346
10	CP	148608.637m	565944.957m	226.455m	258.670m	0.99991567	0.9999511227	0.99996455
11	CP	142008.164m	575159.280m	221.924m	254.254m	0.99991447	0.9999492103	0.99996526
12	CP	144435.619m	579156.148m	222.443m	254.776m	0.99991494	0.9999497657	0.99996518
13	CP	146527.022m	587160.790m	217.992m	250.328m	0.99991621	0.9999503394	0.99996587
14	CP	135014.741m	576908.565m	228.148m	260.536m	0.99991267	0.9999483890	0.99996428
15	CP	137726.395m	567686.166m	221.472m	253.777m	0.99991390	0.9999485722	0.99996533
16	CP	136853.711m	559202.802m	214.566m	246.778m	0.99991491	0.9999485003	0.99996641

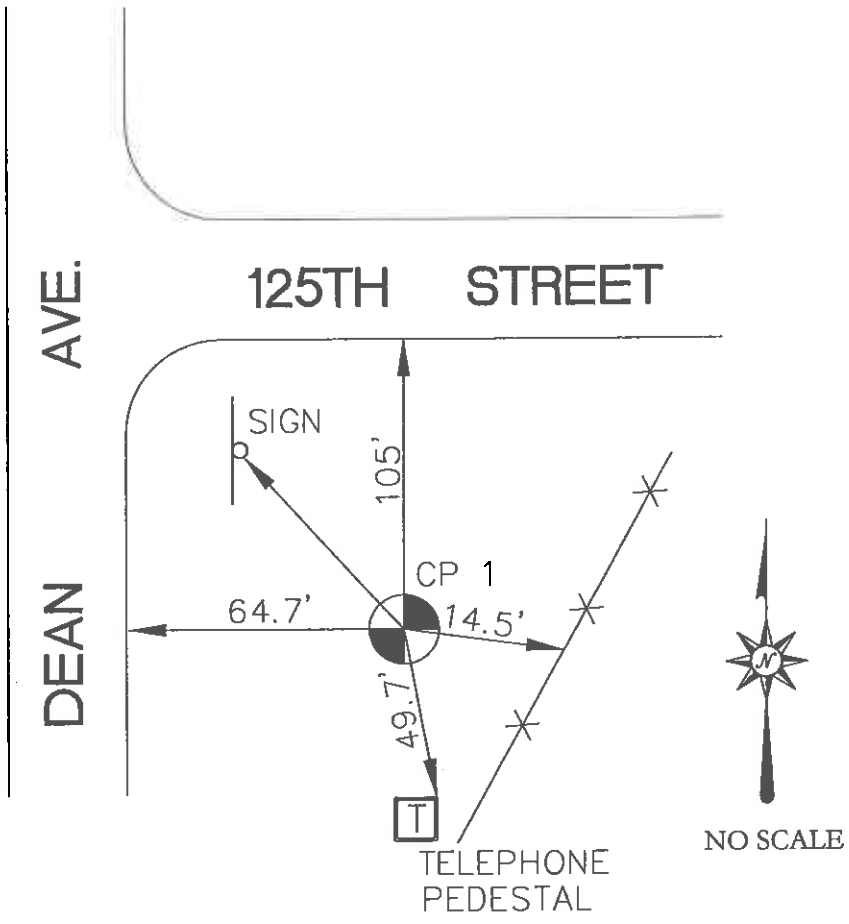
[Back to top](#)

CP 1

SET 5/8 INCH REBAR WITH #13141 LS CAP.



POINT	GEODETTIC COORDINATES WGS 84			STATE PLANE COORDINATES IOWA SOUTH (1402) NAD 83		
	LATITUDE DEG. MIN. SEC.	LONGITUDE DEG. MIN. SEC.	HEIGHT	NORTHING	EASTING	NAVD88 ELEV.
1	41° 28' 20.25019"N	92° 48' 16.82163"W	229.351 M	163729.750 M	558078.940 M	261.452 M
COMBINATION FACTOR						0.99992366



SITE DIAGRAM
 MAHASKA COUNTY, IOWA
 SECTION 15, T-77N, R-17W

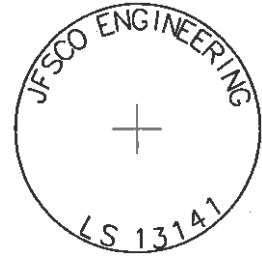
JFSCO ENGINEERING, P.C.
 608 2nd STREET
 RED OAK, IOWA 51566

Ph:(712)623-2579 Email:jfSCO@redoak.heartland.net
 Fax:(712)623-5819

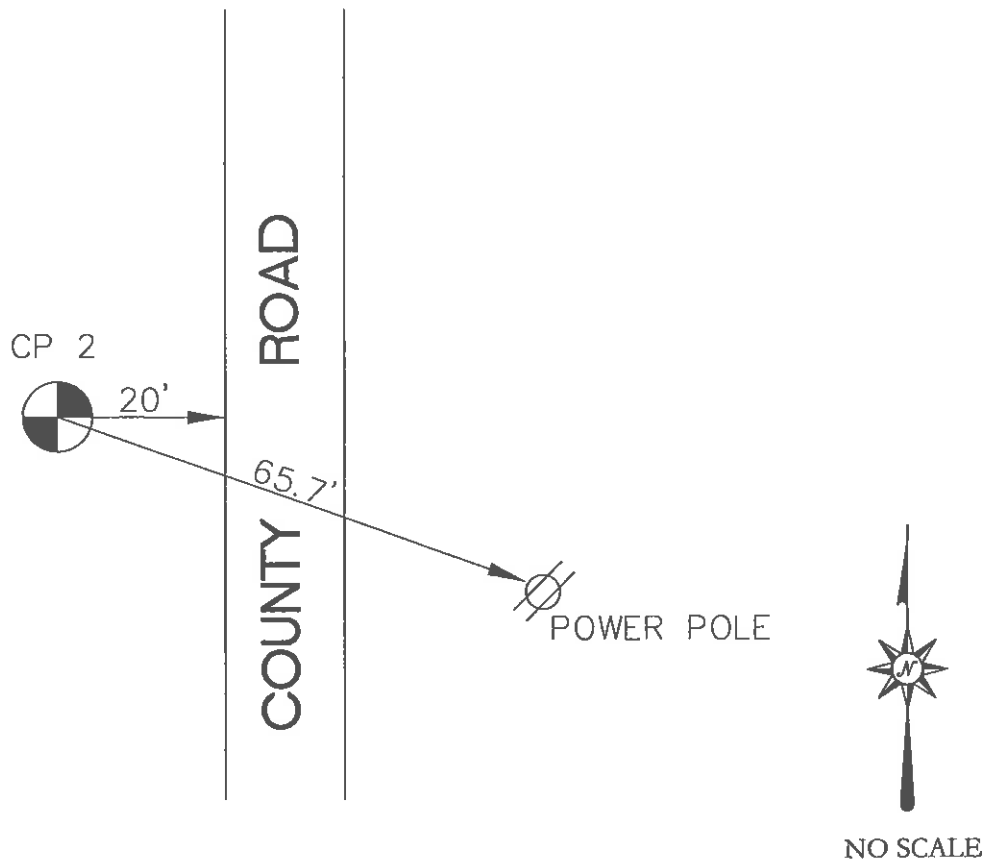
Civil Engineers and Land Surveyors

CP 2

SET 5/8 INCH REBAR WITH #13141 LS CAP.



POINT	GEODETIC COORDINATES WGS 84			STATE PLANE COORDINATES IOWA SOUTH (1402) NAD 83		
	LATITUDE DEG. MIN. SEC.	LONGITUDE DEG. MIN. SEC.	HEIGHT	NORTHING	EASTING	NAVD88 ELEV.
2	41° 28' 29.01397"N	92° 41' 58.82644"W	239.155 M	164075.499 M	566846.495 M	271.275 M
				COMBINATION FACTOR 0.99992233		



SITE DIAGRAM
MAHASKA COUNTY, IOWA
SECTION 16, T-77N, R-16W



JFSCO ENGINEERING, P.C.
608 2nd STREET
RED OAK, IOWA 51566

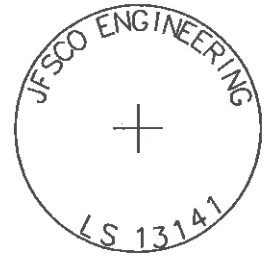
Ph:(712)623-2579
Fax:(712)623-5819

Email:jfSCO@redoak.heartland.net

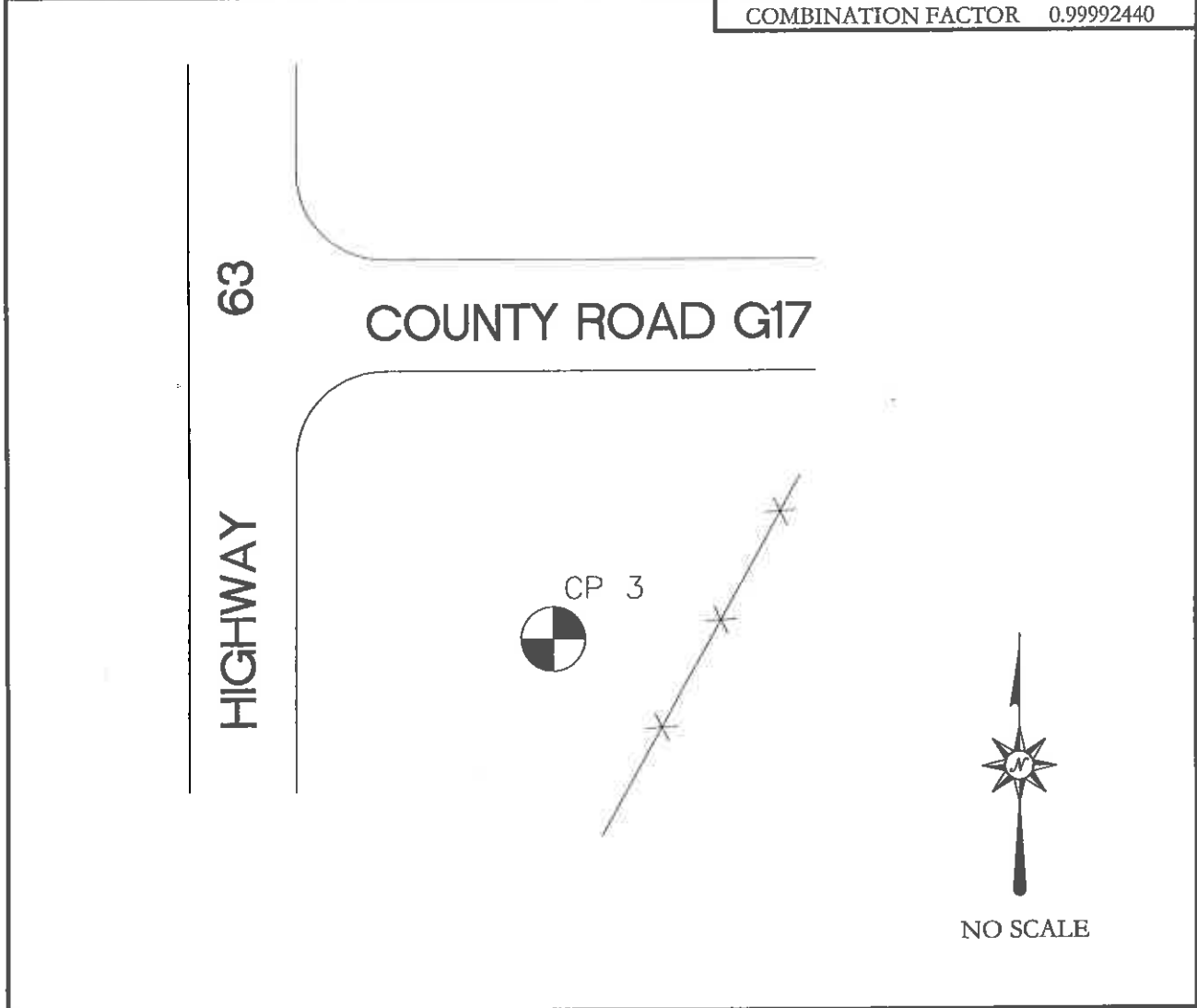
Civil Engineers and Land Surveyors

CP 3

SET 5/8 INCH REBAR WITH #13141 LS CAP.



POINT	GEODETTIC COORDINATES WGS 84			STATE PLANE COORDINATES IOWA SOUTH (1402) NAD 83		
	LATITUDE DEG. MIN. SEC.	LONGITUDE DEG. MIN. SEC.	HEIGHT	NORTHING	EASTING	NAVD88 ELEV.
3	41° 28' 49.50432"N	92° 34' 21.15918"W	228.982 M	164813.042 M	577457.780 M	261.111 M
COMBINATION FACTOR						0.99992440



SITE DIAGRAM
 MAHASKA COUNTY, IOWA
 SECTION 15, T-77N, R-15W



JFSCO ENGINEERING, P.C.
 608 2nd STREET
 RED OAK, IOWA 51566

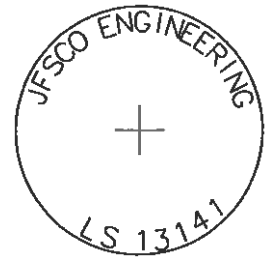
Ph: (712) 623-2579
 Fax: (712) 623-5819

Email: jfSCO@redook.heartland.net

Civil Engineers and Land Surveyors

CP 4

SET 5/8 INCH REBAR WITH #13141 LS CAP.

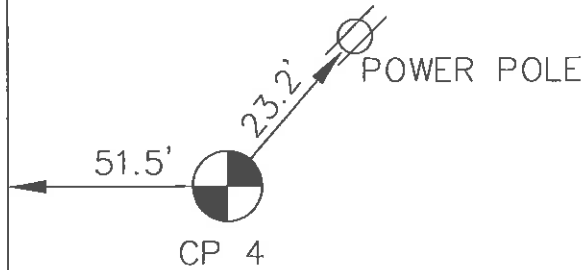


POINT	GEODETTIC COORDINATES WGS 84			STATE PLANE COORDINATES IOWA SOUTH (1402) NAD 83		
	LATITUDE DEG. MIN. SEC.	LONGITUDE DEG. MIN. SEC.	HEIGHT	NORTHING	EASTING	NAVD88 ELEV.
4	41° 29' 14.75836"N	92° 28' 27.71491"W	236.482 M	165684.122 M	585647.787 M	886.504 M
COMBINATION FACTOR						0.99992383

268.544

See attached

COUNTY ROAD V 13



NO SCALE

SITE DIAGRAM
 MAHASKA COUNTY, IOWA
 SECTION 9, T-77N, R-14W



JFSCO ENGINEERING, P.C.
 608 2nd STREET
 RED OAK, IOWA 51566

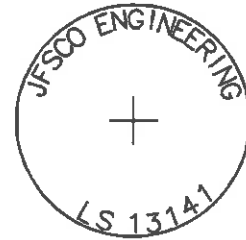
Ph: (712) 623-2579
 Fax: (712) 623-5819

Email: jfSCO@redoak.heartland.net

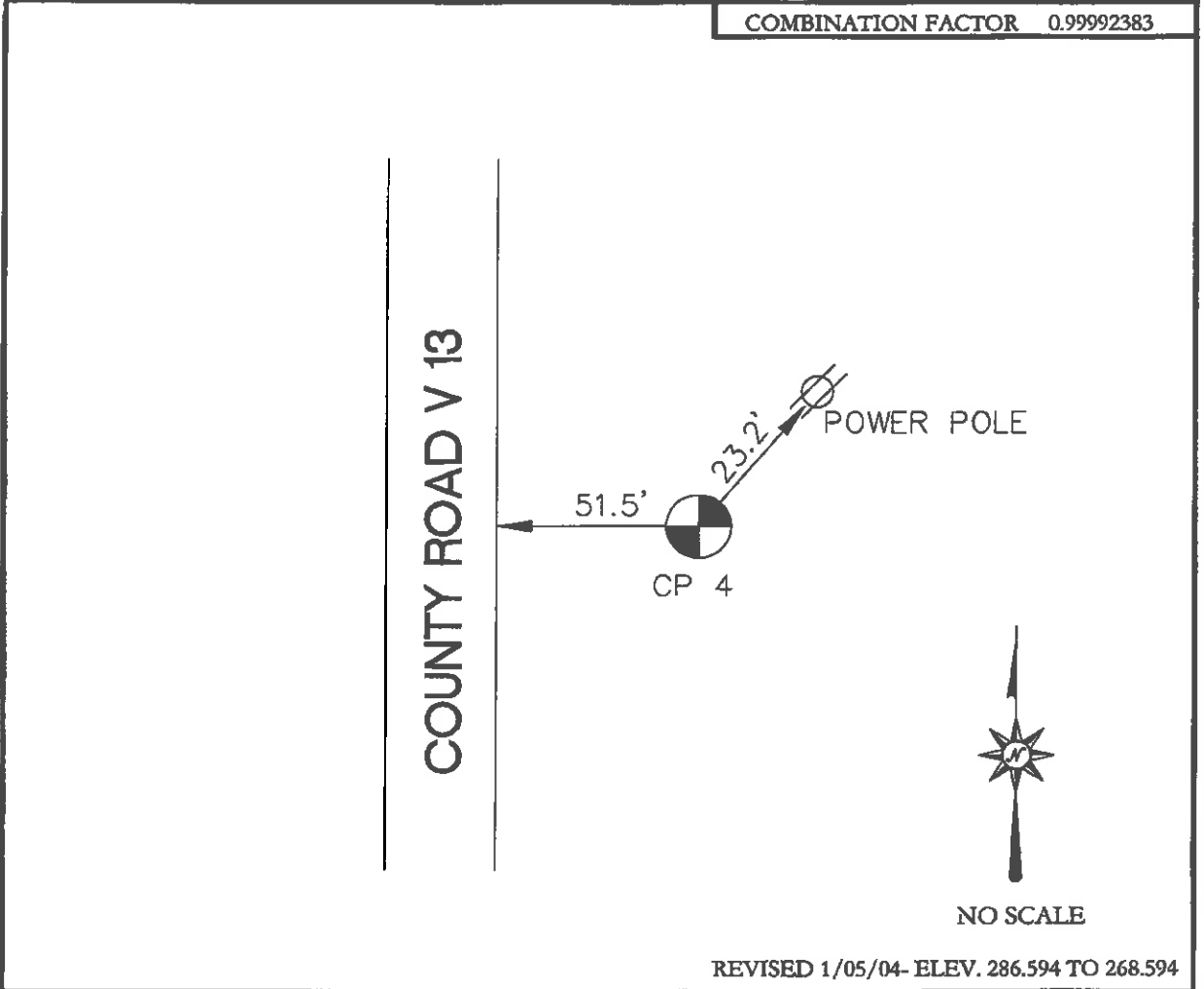
Civil Engineers and Land Surveyors

CP 4

SET 5/8 INCH REBAR WITH #13141 LS CAP.



POINT	GEODETTIC COORDINATES WGS 84			STATE PLANE COORDINATES IOWA SOUTH (1402) NAD 83		
	LATITUDE DEG. MIN. SEC.	LONGITUDE DEG. MIN. SEC.	HEIGHT	NORTHING	EASTING	NAVD88 ELEV.
4	41° 29' 14.75836"N	92° 28' 27.71491"W	236.482 M	165684.122 M	585647.787 M	268.594 M
COMBINATION FACTOR						0.99992383



REVISED 1/05/04- ELEV. 286.594 TO 268.594

SITE DIAGRAM
MAHASKA COUNTY, IOWA
SECTION 9, T-77N, R-14W



JFSCO ENGINEERING, P.C.
608 2nd STREET
RED OAK, IOWA 51566

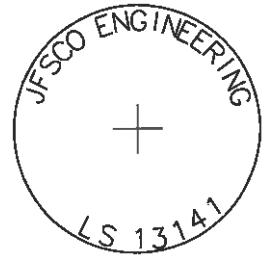
Ph:(712)623-2579
Fax:(712)623-5819

Email:jfSCO@redoak.heartland.net

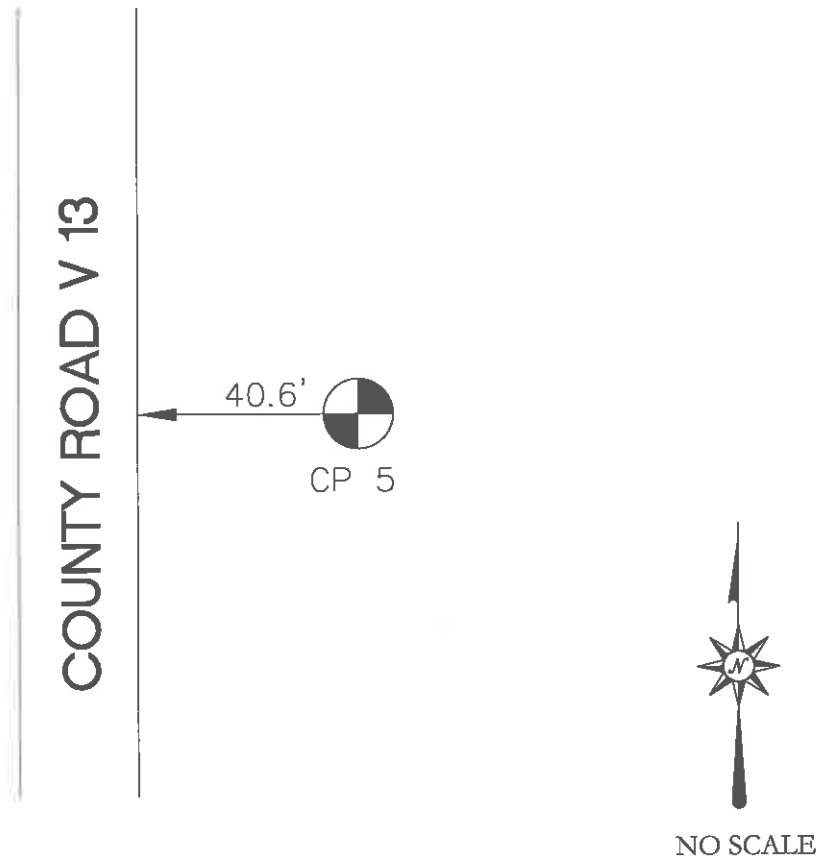
Civil Engineers and Land Surveyors

CP 5

SET 5/8 INCH REBAR WITH #13141 LS CAP.



POINT	GEODETIC COORDINATES WGS 84			STATE PLANE COORDINATES IOWA SOUTH (1402) NAD 83		
	LATITUDE DEG. MIN. SEC.	LONGITUDE DEG. MIN. SEC.	HEIGHT	NORTHING	EASTING	NAVD88 ELEV.
5	41° 23' 58.72561"N	92° 29' 00.18907"W	216.178 M	155926.531 M	585008.481 M	248.403 M
COMBINATION FACTOR						0.99992053



SITE DIAGRAM
 MAHASKA COUNTY, IOWA
 SECTION 9, T-76N, R-14W

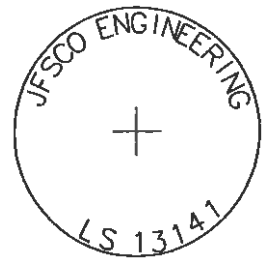
JFSCO ENGINEERING, P.C.
 608 2nd STREET
 RED OAK, IOWA 51566

Ph:(712)623-2579 Email:jfSCO@redoak.heartland.net
 Fax:(712)623-5819

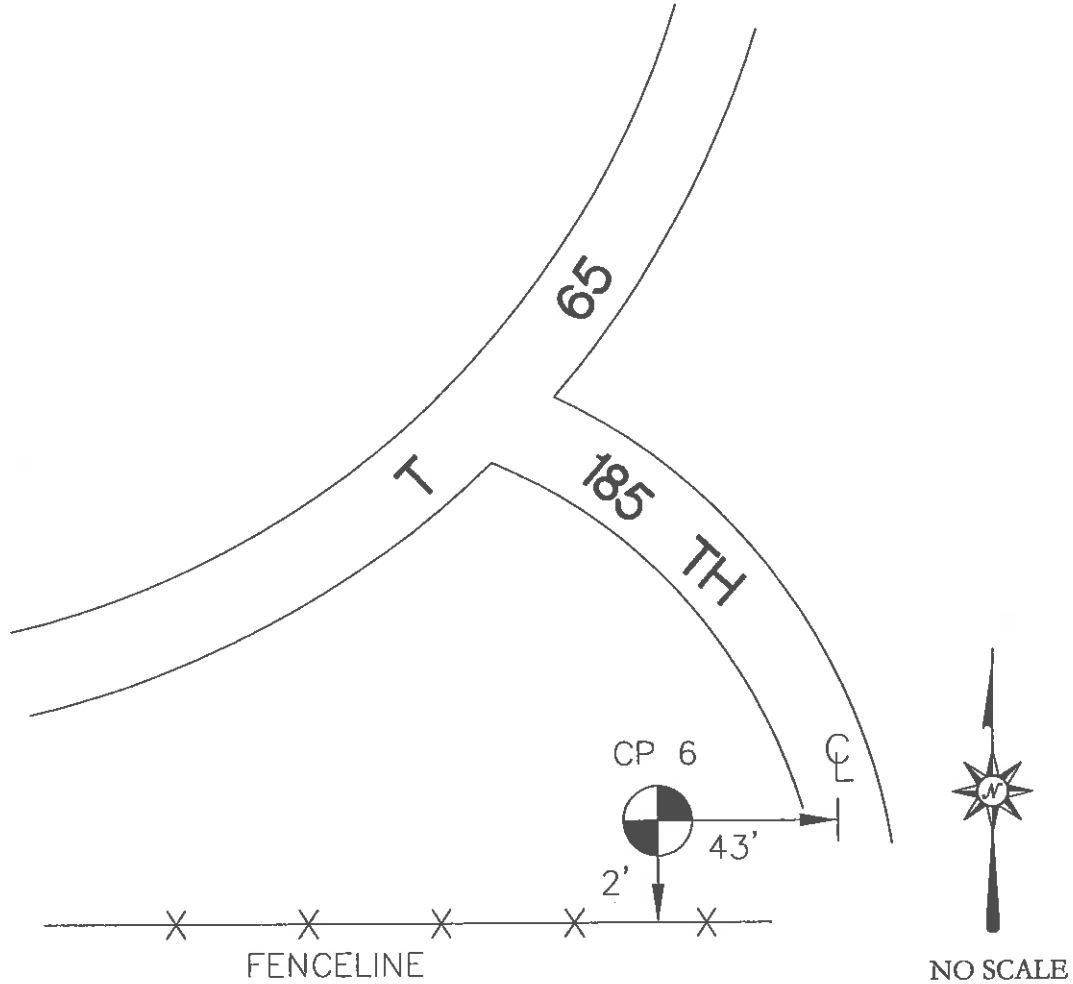
Civil Engineers and Land Surveyors

CP 6

SET 5/8 INCH REBAR WITH #13141 LS CAP.



POINT	GEODETIC COORDINATES WGS 84			STATE PLANE COORDINATES IOWA SOUTH (1402) NAD 83		
	LATITUDE DEG. MIN. SEC.	LONGITUDE DEG. MIN. SEC.	HEIGHT	NORTHING	EASTING	NAVD88 ELEV.
6	41° 23' 37.00395"N	92° 34' 28.69453"W	215.819 M	155171.299 M	577385.531 M	248.037 M
COMBINATION FACTOR 0.99992023						



SITE DIAGRAM
MAHASKA COUNTY, IOWA
SECTION 15, T-76N, R-15W



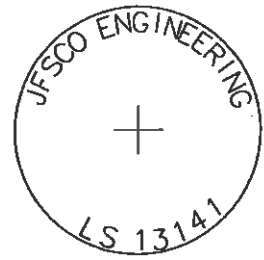
JFSCO ENGINEERING, P.C.
608 2nd STREET
RED OAK, IOWA 51566

Ph:(712)623-2579 Email:jfSCO@redoak.heartland.net
Fax:(712)623-5819

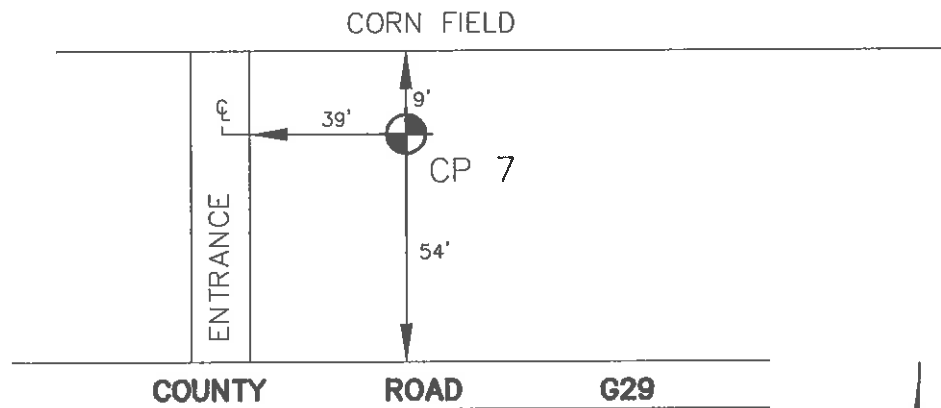
Civil Engineers and Land Surveyors

CP 7

SET 5/8 INCH REBAR WITH #13141 LS CAP.



POINT	GEODETIC COORDINATES WGS 84			STATE PLANE COORDINATES IOWA SOUTH (1402) NAD 83		
	LATITUDE DEG. MIN. SEC.	LONGITUDE DEG. MIN. SEC.	HEIGHT	NORTHING	EASTING	NAVD88 ELEV.
7	41° 24' 03.68893"N	92° 40' 57.20483"W	221.875 M	155904.055 M	568353.065 M	254.055 M
COMBINATION FACTOR 0.99991972						



NO SCALE

SITE DIAGRAM
MAHASKA COUNTY, IOWA
SECTION 10, T-76N, R-16W



JFSCO ENGINEERING, P.C.
608 2nd STREET
RED OAK, IOWA 51566

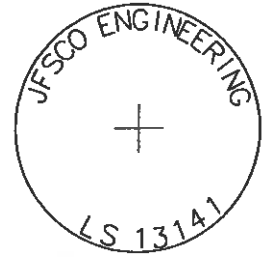
Ph:(712)623-2579
Fax:(712)623-5819

Email:jfSCO@redoak.heartland.net

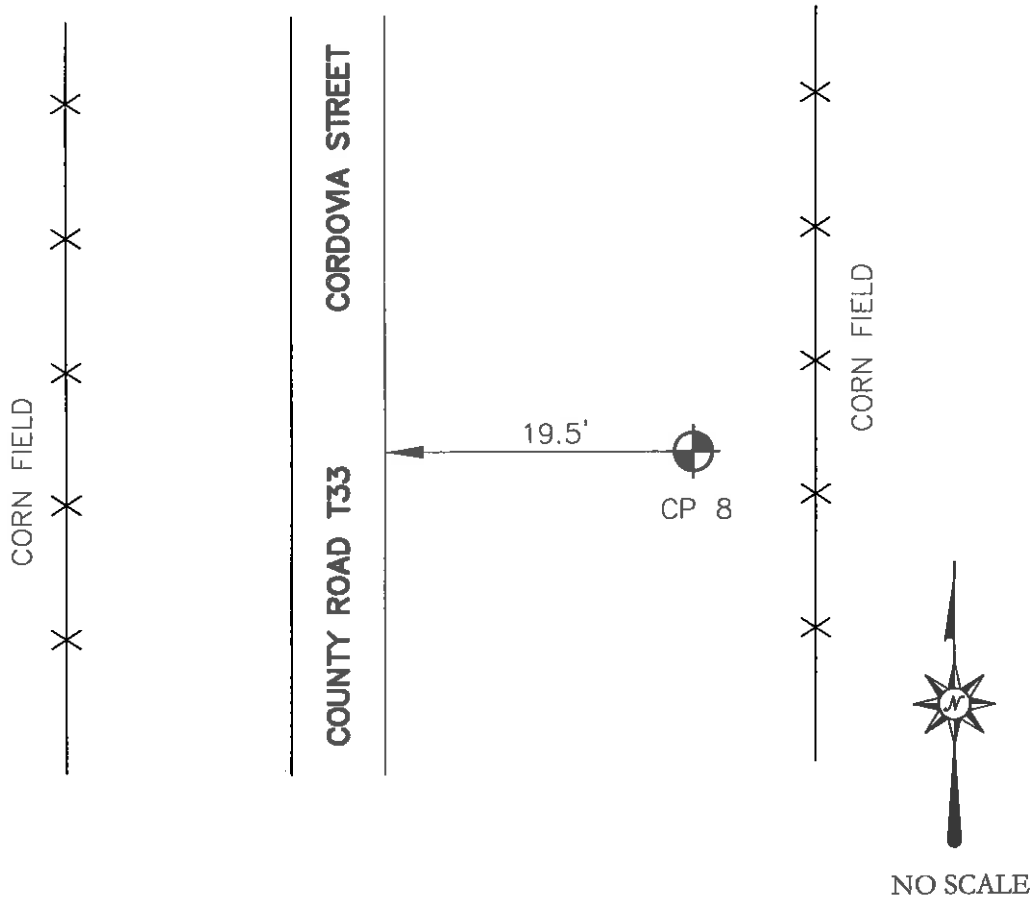
Civil Engineers and Land Surveyors

CP 8

SET 5/8 INCH REBAR WITH #13141 LS CAP.



POINT	GEODETTIC COORDINATES WGS 84			STATE PLANE COORDINATES IOWA SOUTH (1402) NAD 83		
	LATITUDE DEG. MIN. SEC.	LONGITUDE DEG. MIN. SEC.	HEIGHT	NORTHING	EASTING	NAVD88 ELEV.
8	41° 23' 17.03432"N	92° 48' 49.50874"W	232.539 M	154370.028 M	557394.344 M	264.661 M
				COMBINATION FACTOR 0.99991729		



SITE DIAGRAM
MAHASKA COUNTY, IOWA
SECTION 15, T-76N, R-17W



JFSCO ENGINEERING, P.C.
608 2nd STREET
RED OAK, IOWA 51566

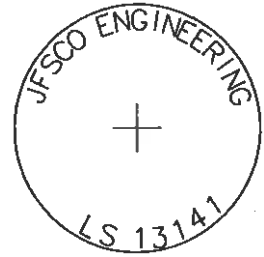
Ph:(712)623-2579
Fax:(712)623-5819

Email:jfSCO@redoak.heartland.net

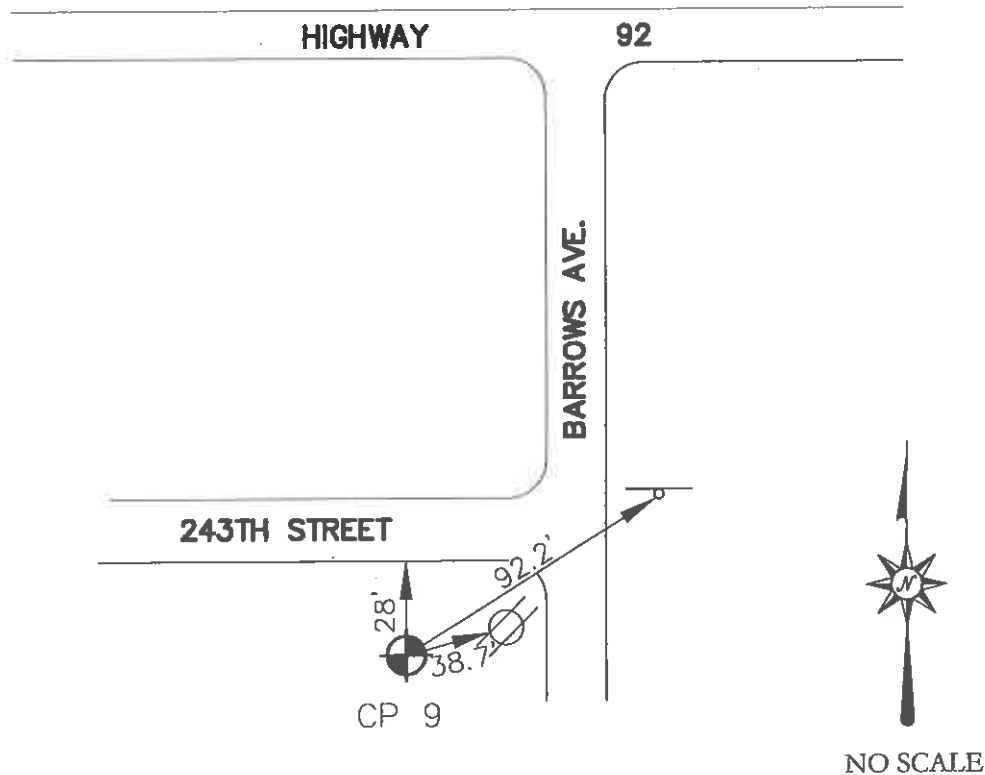
Civil Engineers and Land Surveyors

CP 9

SET 5/8 INCH REBAR WITH #13141 LS CAP.



POINT	GEODETTIC COORDINATES WGS 84			STATE PLANE COORDINATES IOWA SOUTH (1402) NAD 83		
	LATITUDE DEG. MIN. SEC.	LONGITUDE DEG. MIN. SEC.	HEIGHT	NORTHING	EASTING	NAVD88 ELEV.
9	41° 18' 10.31132"N	92° 50' 32.21951"W	233.385 M	144889.867 M	555079.764 M	265.521 M
COMBINATION FACTOR						0.99991341



SITE DIAGRAM
 MAHASKA COUNTY, IOWA
 SECTION 17, T-75N, R-17W



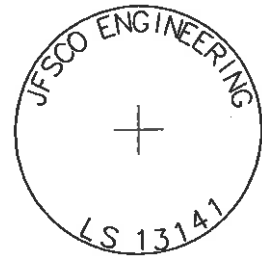
JFSCO ENGINEERING, P.C.
 608 2nd STREET
 RED OAK, IOWA 51566

Ph: (712) 623-2579 Email: jfSCO@redoak.heartland.net
 Fax: (712) 623-5819

Civil Engineers and Land Surveyors

CP 10

SET 5/8 INCH REBAR WITH #13141 LS CAP.

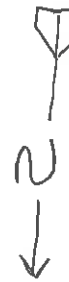


POINT	GEODETIC COORDINATES WGS 84			STATE PLANE COORDINATES IOWA SOUTH (1402) NAD 83		
	LATITUDE DEG. MIN. SEC.	LONGITUDE DEG. MIN. SEC.	HEIGHT	NORTHING	EASTING	NAVD88 ELEV.
10	41° 20' 07.93000"N	92° 42' 43.71980"W	226.455 M	148608.637 M	565944.957 M	258.670 M
COMBINATION FACTOR 0.99991567						

COUNTY ROAD G39



Located on North
side of Road



NO SCALE

SITE DIAGRAM
MAHASKA COUNTY, IOWA
SECTION 33, T-76N, R-16W



JFSCO ENGINEERING, P.C.
608 2nd STREET
RED OAK, IOWA 51566

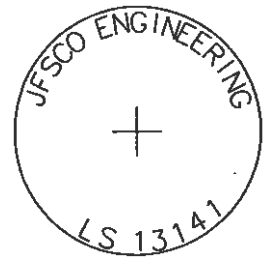
Ph:(712)623-2579
Fax:(712)623-5819

Email:jfSCO@redoak.heartland.net

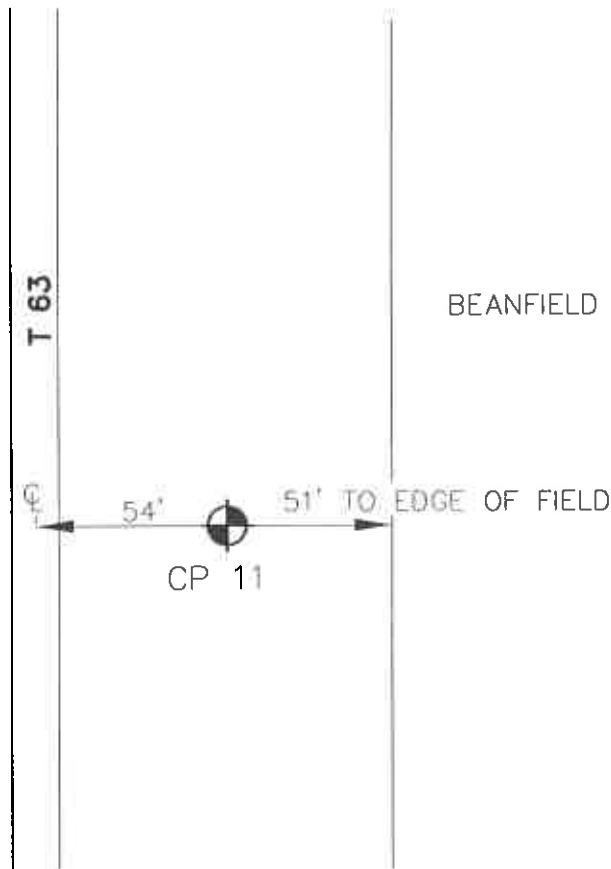
Civil Engineers and Land Surveyors

CP 11

SET 5/8 INCH REBAR WITH #13141 LS CAP.



POINT	GEODETTIC COORDINATES WGS 84			STATE PLANE COORDINATES IOWA SOUTH (1402) NAD 83		
	LATITUDE DEG. MIN. SEC.	LONGITUDE DEG. MIN. SEC.	HEIGHT	NORTHING	EASTING	NAVD88 ELEV.
11	41° 16' 31.08218"N	92° 36' 10.36772"W	221.924 M	142008.164 M	575159.280 M	254.254 M
COMBINATION FACTOR						0.99991447



NO SCALE

SITE DIAGRAM
 MAHASKA COUNTY, IOWA
 SECTION 28, T-75N, R-15W



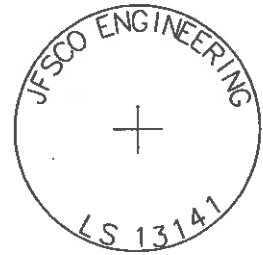
JFSCO ENGINEERING, P.C.
 608 2nd STREET
 RED OAK, IOWA 51566

Ph:(712)623-2579 Email:jfSCO@redoak.heartland.net
 Fax:(712)623-5819

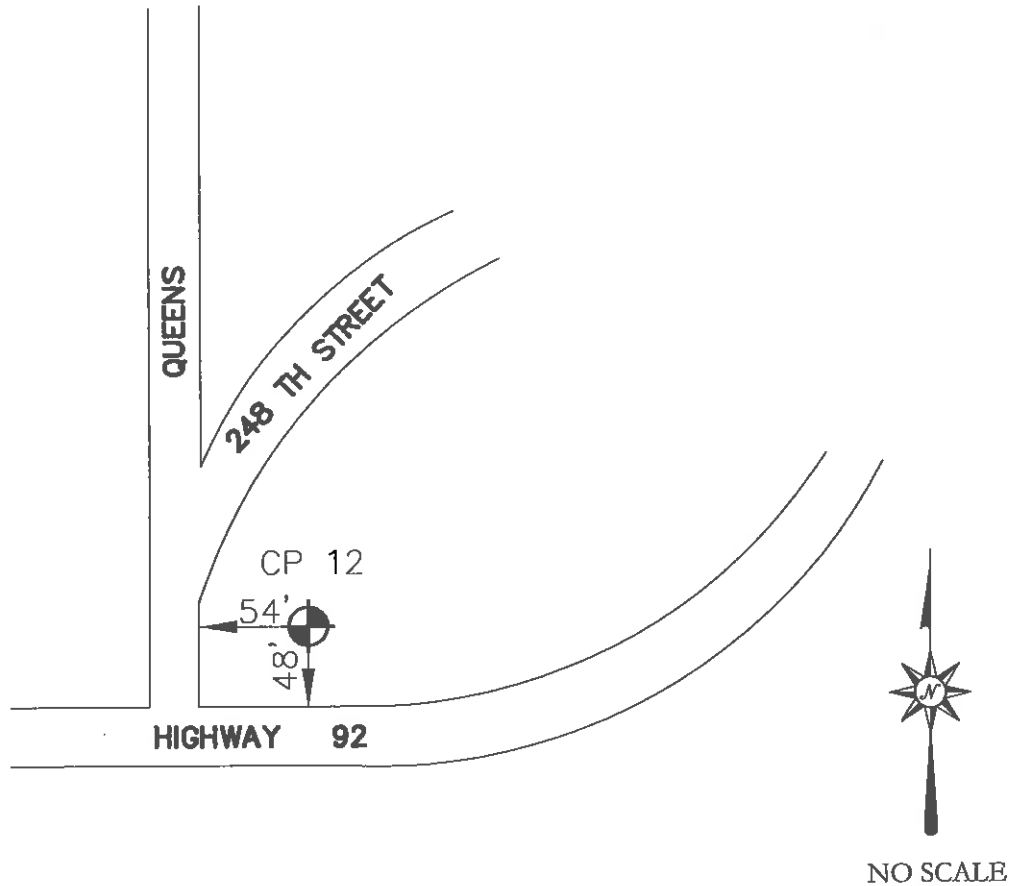
Civil Engineers and Land Surveyors

CP 12

SET 5/8 INCH REBAR WITH #13141 LS CAP.



POINT	GEODETTIC COORDINATES WGS 84			STATE PLANE COORDINATES IOWA SOUTH (1402) NAD 83		
	LATITUDE DEG. MIN. SEC.	LONGITUDE DEG. MIN. SEC.	HEIGHT	NORTHING	EASTING	NAVD88 ELEV.
12	41° 17' 48.39584"N	92° 33' 17.50010"W	222.443 M	144435.619	579156.148 M	254.776 M
COMBINATION FACTOR 0.99991494						



SITE DIAGRAM
MAHASKA COUNTY, IOWA
SECTION 14, T-75N, R-15W



JFSCO ENGINEERING, P.C.
608 2nd STREET
RED OAK, IOWA 51566

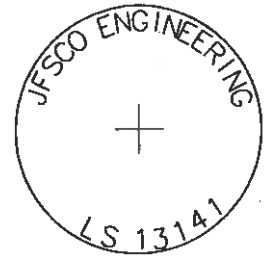
Ph:(712)623-2579
Fax:(712)623-5819

Email:jfSCO@redoak.heartland.net

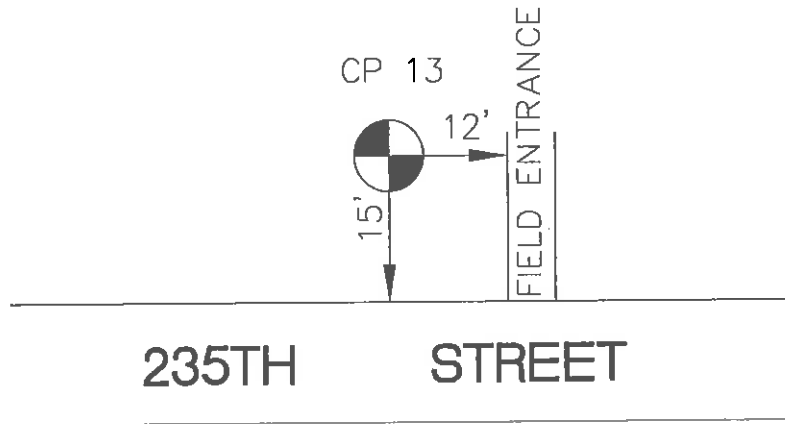
Civil Engineers and Land Surveyors

CP 13

SET 5/8 INCH REBAR WITH #13141 LS CAP.



POINT	GEODETTIC COORDINATES WGS 84			STATE PLANE COORDINATES IOWA SOUTH (1402) NAD 83		
	LATITUDE DEG. MIN. SEC.	LONGITUDE DEG. MIN. SEC.	HEIGHT	NORTHING	EASTING	NAVD88 ELEV.
13	41° 18' 53.22515"N	92° 27' 32.37879"W	217.992 M	146527.022 M	587160.790 M	250.328 M
COMBINATION FACTOR						0.99991621



NO SCALE

SITE DIAGRAM
 MAHASKA COUNTY, IOWA
 SECTION 10, T-75N, R-14W

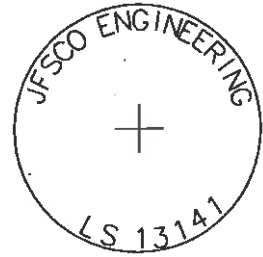
JFSCO ENGINEERING, P.C.
 608 2nd STREET
 RED OAK, IOWA 51566

Ph: (712) 623-2579 Email: jfsc0@redoak.heartland.net
 Fax: (712) 623-5819

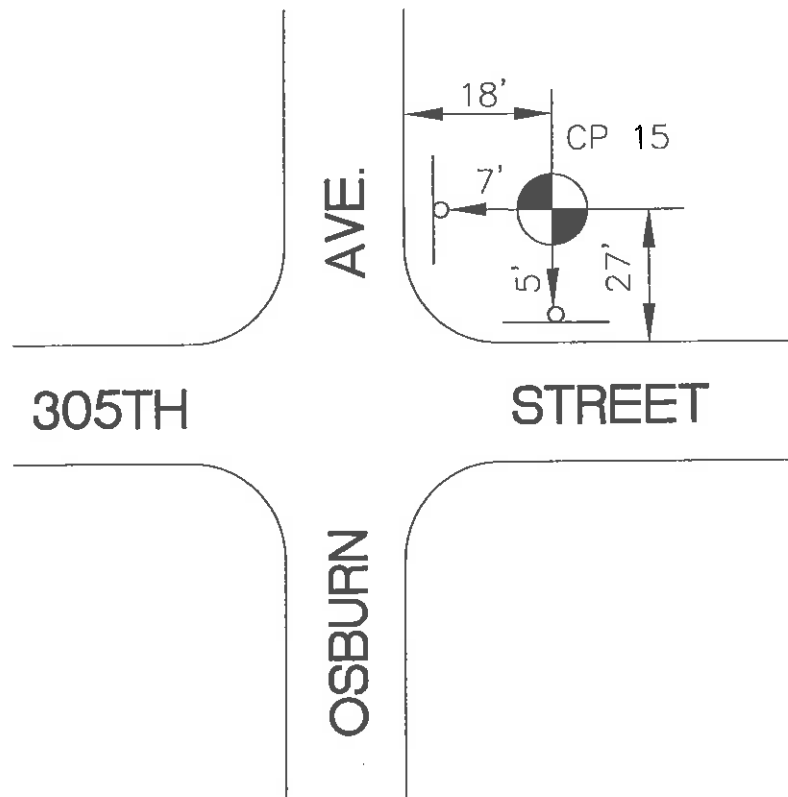
Civil Engineers and Land Surveyors

CP 14

SET 5/8 INCH REBAR WITH #13141 LS CAP.



POINT	GEODETTIC COORDINATES WGS 84			STATE PLANE COORDINATES IOWA SOUTH (1402) NAD 83		
	LATITUDE DEG. MIN. SEC.	LONGITUDE DEG. MIN. SEC.	HEIGHT	NORTHING	EASTING	NAVD88 ELEV.
14	41° 12' 43.79751"N	92° 34' 58.37394"W	228.148 M	135014.741 M	576908.565 M	260.536 M
COMBINATION FACTOR						0.99991267



NO SCALE

SITE DIAGRAM
 MAHASKA COUNTY, IOWA
 SECTION 15, T-74N, R-15W



JFSCO ENGINEERING, P.C.
 608 2nd STREET
 RED OAK, IOWA 51566

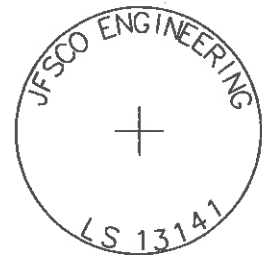
Ph:(712)623-2579
 Fax:(712)623-5819

Email:jfSCO@redoak.heartland.net

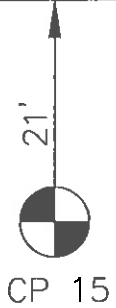
Civil Engineers and Land Surveyors

CP 15

SET 5/8 INCH REBAR WITH #13141 LS CAP.



POINT	GEODETIC COORDINATES WGS 84			STATE PLANE COORDINATES IOWA SOUTH (1402) NAD 83		
	LATITUDE DEG. MIN. SEC.	LONGITUDE DEG. MIN. SEC.	HEIGHT	NORTHING	EASTING	NAVD88 ELEV.
15	41° 14' 14.66079"N	92° 41' 33.17963"W	221.472 M	137726.395 M	567686.166 M	253.777 M
				COMBINATION FACTOR 0.99991390		



NO SCALE

SITE DIAGRAM
MAHASKA COUNTY, IOWA
SECTION 3, T-74N, R-16W



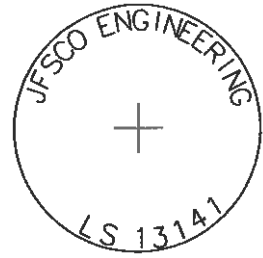
JFSCO ENGINEERING, P.C.
608 2nd STREET
RED OAK, IOWA 51566

Ph:(712)623-2579 Email:jfSCO@redoak.heartland.net
Fax:(712)623-5819

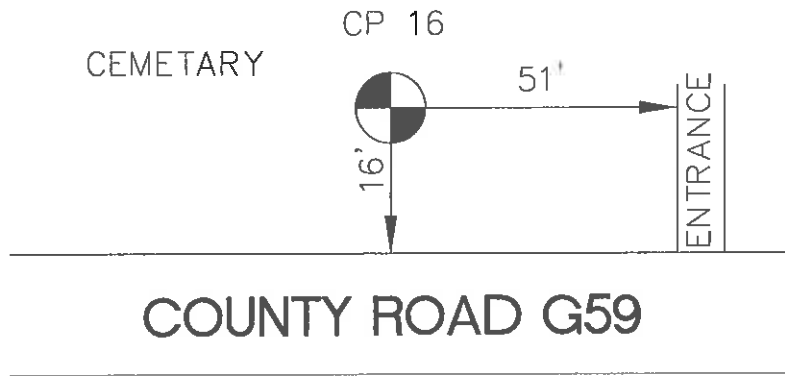
Civil Engineers and Land Surveyors

CP 16

SET 5/8 INCH REBAR WITH #13141 LS CAP.



POINT	GEODETTIC COORDINATES WGS 84			STATE PLANE COORDINATES IOWA SOUTH (1402) NAD 83		
	LATITUDE DEG. MIN. SEC.	LONGITUDE DEG. MIN. SEC.	HEIGHT	NORTHING	EASTING	NAVD88 ELEV.
16	41° 13' 48.76473"N	92° 47' 37.78956"W	214.566 M	136853.711 M	559202.802 M	246.778 M
				COMBINATION FACTOR 0.99991491		



NO SCALE

SITE DIAGRAM
MAHASKA COUNTY, IOWA
SECTION 10, T-74N, R-17W



JFSCO ENGINEERING, P.C.
608 2nd STREET
RED OAK, IOWA 51566

Ph:(712)623-2579
Fax:(712)623-5819

Email:jfSCO@redoak.heartland.net

Civil Engineers and Land Surveyors