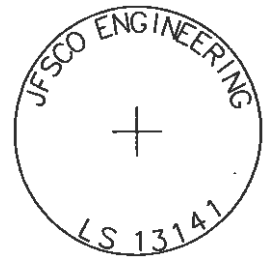
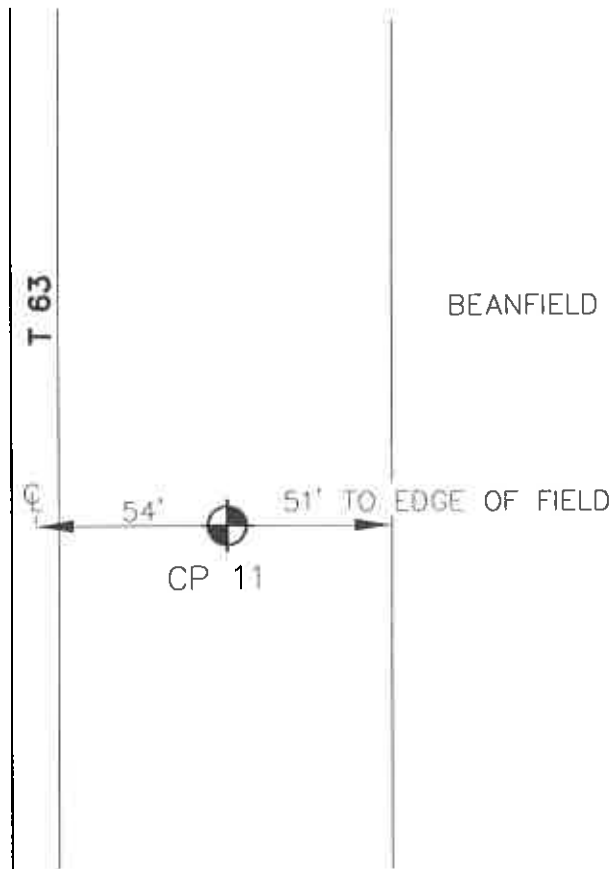


CP 11

SET 5/8 INCH REBAR WITH #13141 LS CAP.



POINT	GEODETIC COORDINATES WGS 84			STATE PLANE COORDINATES IOWA SOUTH (1402) NAD 83		
	LATITUDE DEG. MIN. SEC.	LONGITUDE DEG. MIN. SEC.	HEIGHT	NORTHING	EASTING	NAVD88 ELEV.
11	41° 16' 31.08218"N	92° 36' 10.36772"W	221.924 M	142008.164 M	575159.280 M	254.254 M
COMBINATION FACTOR						0.99991447



NO SCALE

SITE DIAGRAM  
 MAHASKA COUNTY, IOWA  
 SECTION 28, T-75N, R-15W



**JFSCO** ENGINEERING, P.C.  
 608 2nd STREET  
 RED OAK, IOWA 51566

Ph: (712) 623-2579      Email: jfSCO@redoak.heartland.net  
 Fax: (712) 623-5819

Civil Engineers and Land Surveyors