

1998  
Marshall County, Iowa  
Iowa North Zone (1401)  
NAD\_83(1996)

Point Number: 106

Northing: 3444062.52(Ft)      Easting: 5012589.88(Ft)

Northing: 1049752.355(M)      Easting: 1527840.450(M)

Elev: 1024.17(Ft) NAVD\_88

Elev: 312.168(M) NAVD\_88      Ellip Ht: 280.873(M)      96C Geoid Ht: -31.296(M)

Latitude: 41-56-50.678481 N      Longitude: 93-09-51.307567 W

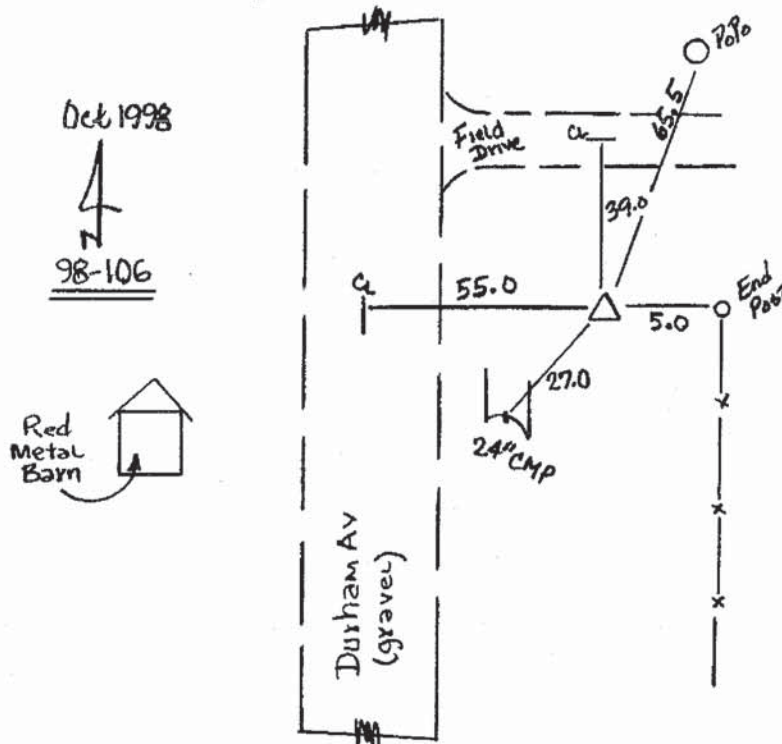
Theta: 0-13-39.18      Combination Factor: 0.99997971

Designation: 98-106 MARSHALL CO GPS CONTROL PT

**Monument Type:** 5/8" dia driven aluminum rod with a 2-1/2" dia aluminum cap and permanent magnet encased in a 5" dia PVC pipe with an aluminum access cover.

**To Reach:** 40ft E of Durham Ave on south side of field entrance 0.15mi S of Sec line near the N Quarter Cor of Sec 3 T82N R20W

Date Printed December 18, 1998



Set NGS Style  
Rod Monument  
with Access Cover

Note: Point 98-106 is  
located 1/2 mile North of  
285<sup>th</sup> St and 0.15 mile  
South of Sec LN