

1998  
Marshall County, Iowa  
Iowa North Zone (1401)  
NAD\_83(1996)

Point Number: 134

Northing: 3508475.42(Ft)      Easting: 5072554.93(Ft)

Northing: 1069385.448(M)      Easting: 1546117.835(M)

Elev: 900.88(Ft) NAVD\_88

Elev: 274.589(M) NAVD\_88      Ellip Ht: 243.074(M)      96C Geoid Ht: -31.515(M)

Latitude: 42-07-23.860748 N      Longitude: 92-56-32.190572 W

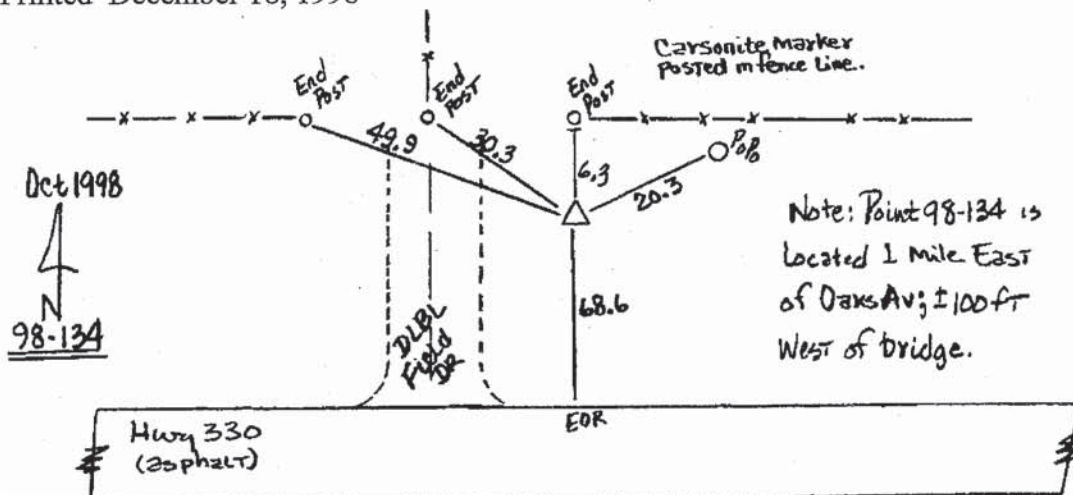
Theta: 0-22-40.78      Combination Factor: 0.99995206

Designation: 98-134 MARSHALL CO GPS CONTROL PT

**Monument Type:** 5/8" dia driven aluminum rod with a 2-1/2" dia aluminum cap and permanent magnet encased in a 5" dia PVC pipe with an aluminum access cover.

**To Reach:** 70ft N of HWY 330 95ft W of W end of bridge near the SE Cor of Sec 33 T85N R18W

Date Printed December 18, 1998



Set NGS style  
Rod Monument  
with Access Cover