

1998
Marshall County, Iowa
Iowa North Zone (1401)
NAD_83(1996)

Point Number: 146

Northing: 3413625.95(Ft) Easting: 5089234.05(Ft)

Northing: 1040475.270(M) Easting: 1551201.640(M)

Elev: 1011.77(Ft) NAVD_88

Elev: 308.388(M) NAVD_88 Ellip Ht: 276.729(M) 96C Geoid Ht: -31.658(M)

Latitude: 41-51-45.743038 N Longitude: 92-53-00.047758 W

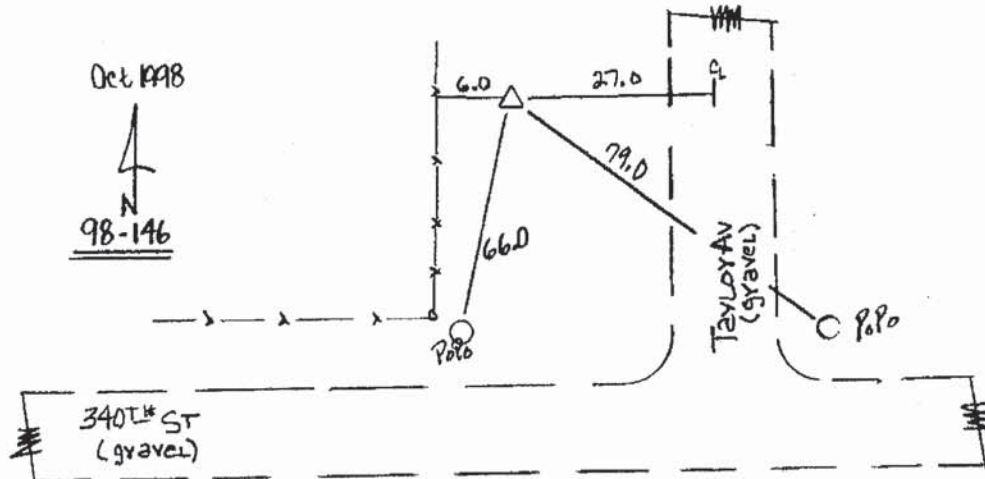
Theta: 0-25-04.56 Combination Factor: 0.99999984

Designation: 98-146 MARSHALL CO GPS CONTROL PT

Monument Type: 5/8" dia driven aluminum rod with a 2-1/2" dia aluminum cap and permanent magnet encased in a 5" dia PVC pipe with an aluminum access cover.

To Reach: 30ft W of Taylor Ave 120ft N of 340th St near the SE Cor of Sec 36 T82N R18W

Date Printed December 18, 1998



Note: Point 98-146 is located ± 120 ft North of 340th St.

Set NGS Style Rod Monument with Access Cover