

1998
Marshall County, Iowa
Iowa North Zone (1401)
NAD_83(1996)

Point Number: 515

Northing: 3434040.11(Ft) Easting: 4994219.32(Ft)

Northing: 1046697.519(M) Easting: 1522241.093(M)

Elev: 1055.70(Ft) NAVD_88

Elev: 321.777(M) NAVD_88 Ellip Ht: 290.557(M) 96C Geoid Ht: -31.220(M)

Latitude: 41-55-12.318348 N Longitude: 93-13-54.822276 W

Theta: 0-10-54.14 Combination Factor: 0.99998424


Designation: 98-515 STORY CO GPS CONTROL PT

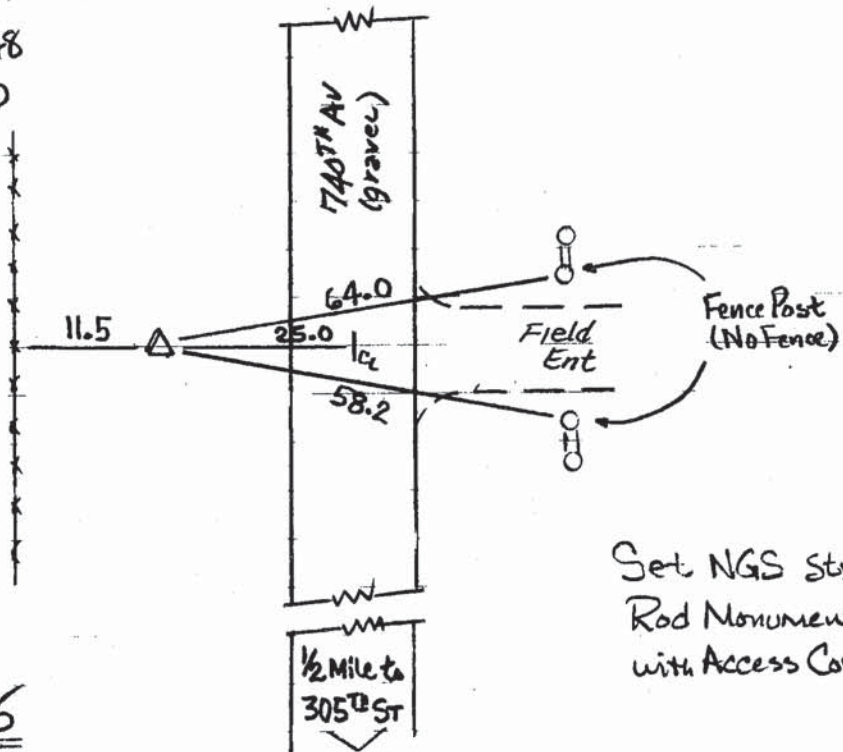
Monument Type: 5/8" dia driven aluminum rod with a 2-1/2" dia aluminum cap and permanent magnet encased in a 5" dia PVC pipe with an aluminum access cover.

To Reach: 25ft west of 740th Av and 1/2 mile north of 305th St. near the NE Cor of Sec 13 T82N,R21W.

Date Printed December 18, 1998

AG8-5348
RKE/JSD
4-6-98


98-515



Set NGS Style
Rod Monument
with Access Cover