

Mills County, Iowa
 Horizontal Datum: **NAD 83(2011)** - Vertical Datum: **NAVD 1988**
 Iowa State Plane South Zone (1402)
 Iowa Regional Coordinate System, Zone 6 Council Bluffs
 US Survey Feet
2016

Point Name: **1**

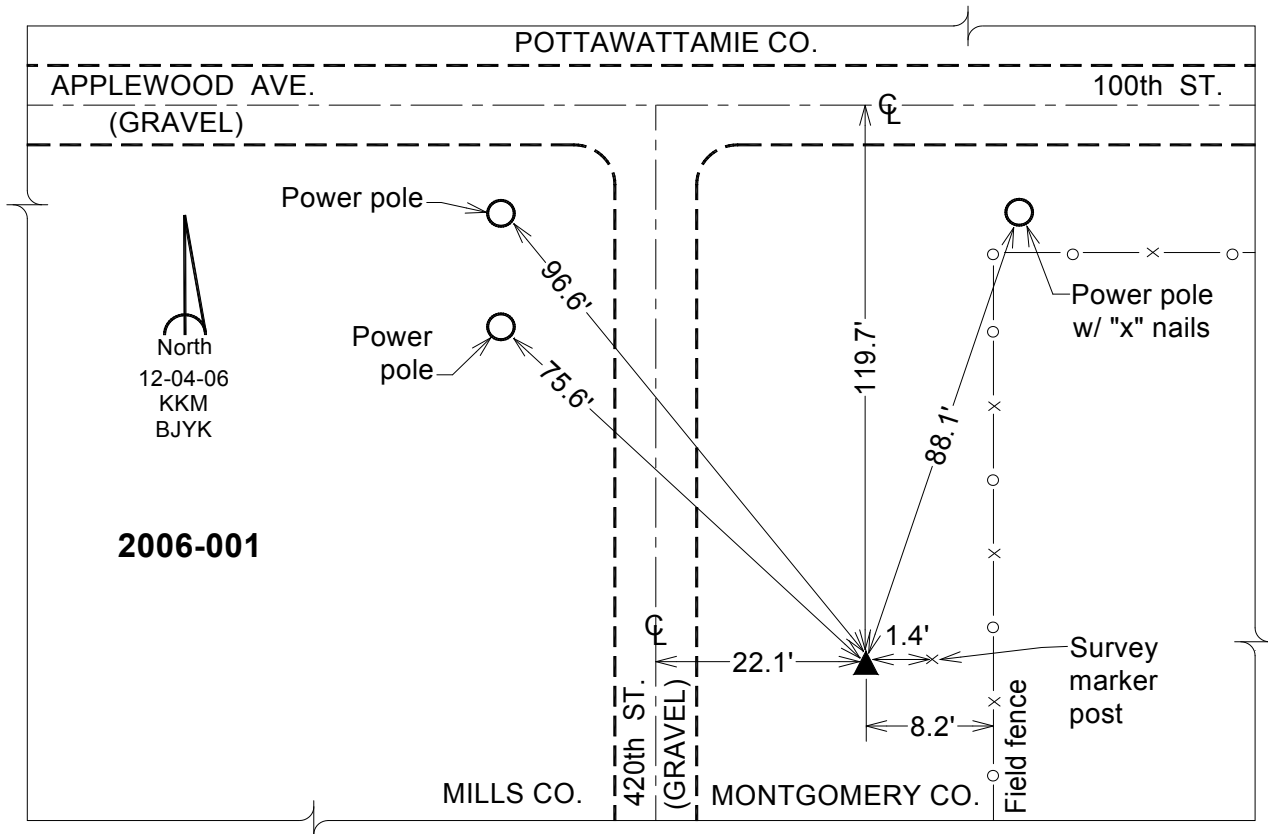
Designation: 2006-001 Mills Co GPS Control Pt.

NAD 83(NA2011) Latitude: **N41°09'34.90481"** Longitude: **W95°23'03.37386"**
 NAVD 88 Ortho Height: **1067.587sft** Ellip. Ht: **975.334sft** Geoid12A

Iowa South Zone (1402) Northing: **428132.973sft** Easting: **1121619.484sft**
 Mapping Angle: **-1°14'28"** Combination Scale Factor: **0.999902090**

laRCS Zone 6 Northing: **6931635.716sft** Easting: **16596123.931sft**
 Mapping Angle: **00° 13' 47"** Combination Scale Factor: **1.000002840**

Monument Type: Berntsen Top Security Rod Monument with a 2-1/2" dia. domed survey cap and permanent magnet encased in a white PVC pipe with a NGS style aluminum access cover.



This document was prepared by Dan Corbin, Inc. on February 8, 2016 for Mills County, Iowa.