

**Mills County, Iowa**  
Horizontal Datum: **NAD 83(2011)** - Vertical Datum: **NAVD 1988**  
Iowa State Plane South Zone (1402)  
Iowa Regional Coordinate System, Zone 6 Council Bluffs  
US Survey Feet  
**2016**

Point Name: **2**

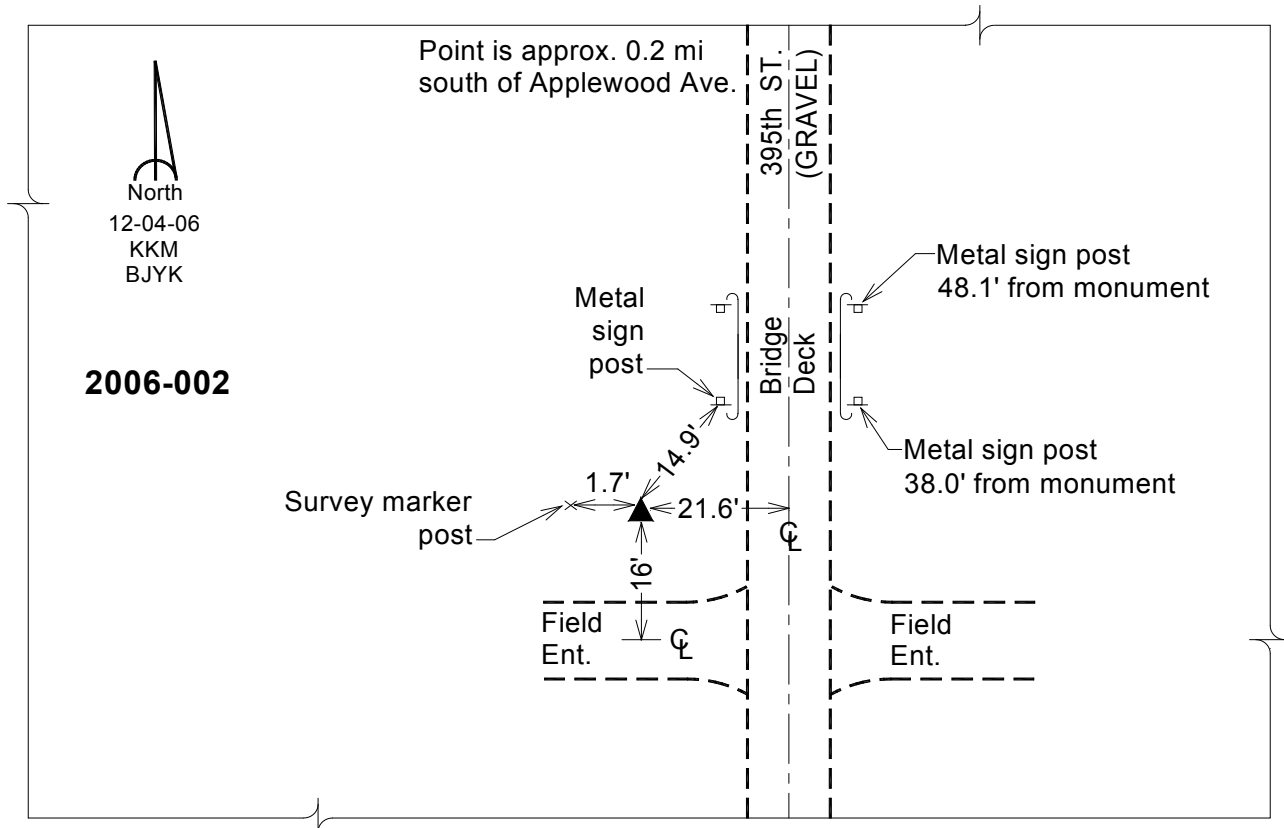
**Designation:** 2006-002 Mills Co GPS Control Pt.

NAD 83(NA2011) Latitude: **N41°09'24.87924"** Longitude: **W95°25'56.92633"**  
NAVD 88 Ortho Height: **1043.760sft** Ellip. Ht: **951.710sft** Geoid**12A**

**Iowa South Zone (1402)** Northing: **427409.792sft** Easting: **1108325.687sft**  
Mapping Angle: **-1°16'23"** Combination Scale Factor: **0.999903253**

**IaRCS Zone 6** Northing: **6930571.421sft** Easting: **16582851.757sft**  
Mapping Angle: **00° 11' 53"** Combination Scale Factor: **1.000001257**

**Monument Type:** Berntsen Top Security Rod Monument with a 2-1/2" dia. domed survey cap and permanent magnet encased in a white PVC pipe with a NGS style aluminum access cover.



*This document was prepared by Dan Corbin, Inc. on February 8, 2016 for Mills County, Iowa.*