

Mills County, Iowa
 Horizontal Datum: **NAD 83(2011)** - Vertical Datum: **NAVD 1988**
 Iowa State Plane South Zone (1402)
 Iowa Regional Coordinate System, Zone 6 Council Bluffs
 US Survey Feet
2016

Point Name: **3**

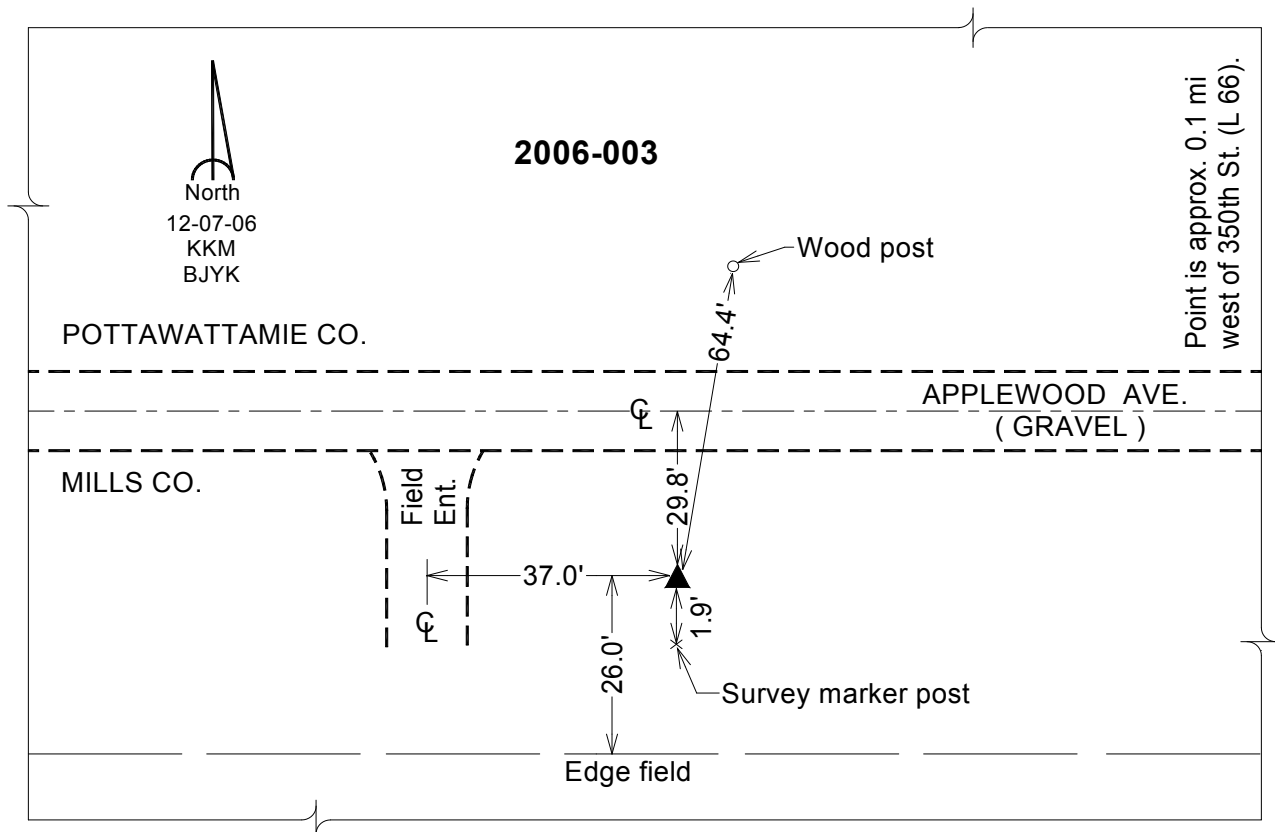
Designation: 2006-003 Mills Co GPS Control Pt.

NAD 83(NA2011) Latitude: **N41°09'36.37299"** Longitude: **W95°31'12.86897"**
 NAVD 88 Ortho Height: **1203.132sft** Ellip. Ht: **1111.588sft** Geoid12A

Iowa South Zone (1402) Northing: **429121.755sft** Easting: **1084192.512sft**
 Mapping Angle: **-1°19'51"** Combination Scale Factor: **0.999895584**

IaRCS Zone 6 Northing: **6931663.422sft** Easting: **16558680.265sft**
 Mapping Angle: **00° 08' 25"** Combination Scale Factor: **0.999989689**

Monument Type: Berntsen Top Security Rod Monument with a 2-1/2" dia. domed survey cap and permanent magnet encased in a white PVC pipe with a NGS style aluminum access cover.



This document was prepared by Dan Corbin, Inc. on February 8, 2016 for Mills County, Iowa.