

Mills County, Iowa
 Horizontal Datum: **NAD 83(2011)** - Vertical Datum: **NAVD 1988**
 Iowa State Plane South Zone (1402)
 Iowa Regional Coordinate System, Zone 6 Council Bluffs
 US Survey Feet
2016

Point Name: **4**

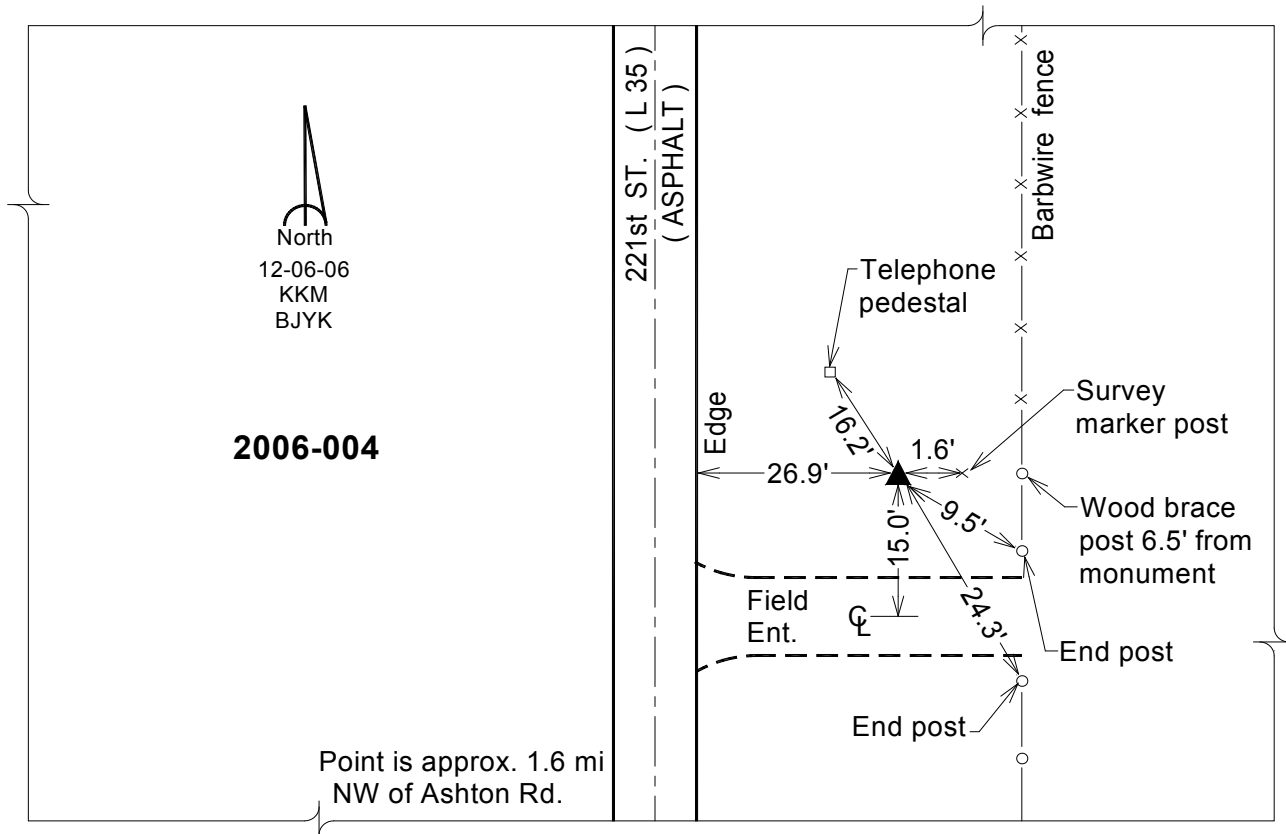
Designation: 2006-004 Mills Co GPS Control Pt.

NAD 83(NA2011) Latitude: **N41°09'30.79476"** Longitude: **W95°47'21.89496"**
 NAVD 88 Ortho Height: **1090.345sft** Ellip. Ht: **1000.257sft** Geoid12A

Iowa South Zone (1402) Northing: **430393.315sft** Easting: **1010083.303sft**
 Mapping Angle: **-1°30'29"** Combination Scale Factor: **0.999900915**

IaRCS Zone 6 Northing: **6931031.977sft** Easting: **16484556.060sft**
 Mapping Angle: **-00° 02' 13"** Combination Scale Factor: **0.999991359**

Monument Type: Berntsen Top Security Rod Monument with a 2-1/2" dia. domed survey cap and permanent magnet encased in a white PVC pipe with a NGS style aluminum access cover.



This document was prepared by Dan Corbin, Inc. on February 8, 2016 for Mills County, Iowa.