

Mills County, Iowa
Horizontal Datum: **NAD 83(2011)** - Vertical Datum: **NAVD 1988**
Iowa State Plane South Zone (1402)
Iowa Regional Coordinate System, Zone 6 Council Bluffs
US Survey Feet
2016

Point Name: **5**

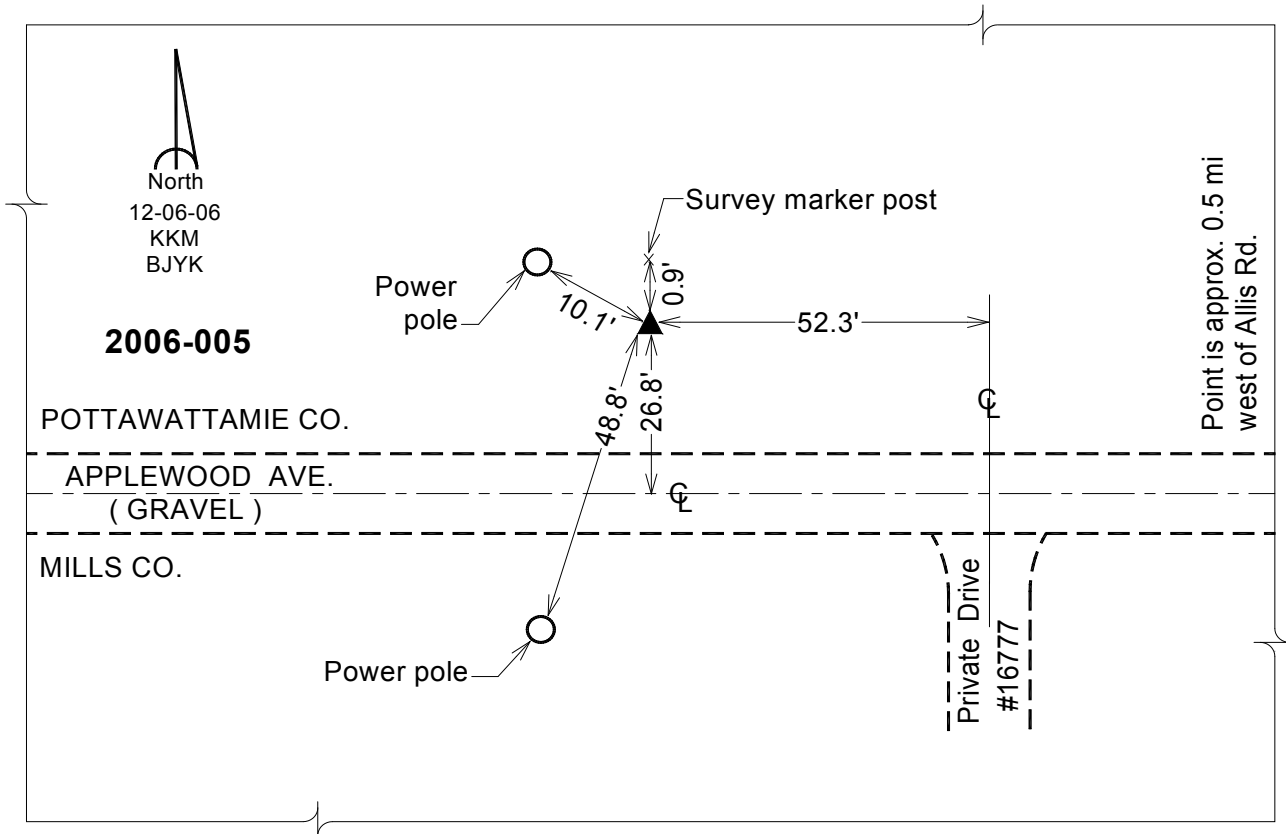
Designation: 2006-005 Mills Co GPS Control Pt.

NAD 83(NA2011) Latitude: **N41°09'37.44376"** Longitude: **W95°52'01.93244"**
NAVD 88 Ortho Height: **968.695sft** Ellip. Ht: **878.984sft** Geoid12A

Iowa South Zone (1402) Northing: **431639.260sft** Easting: **988689.778sft**
Mapping Angle: **-1°33'33"** Combination Scale Factor: **0.999906678**

laRCS Zone 6 Northing: **6931728.325sft** Easting: **16463135.646sft**
Mapping Angle: **-00° 05' 17"** Combination Scale Factor: **0.999998449**

Monument Type: Berntsen Top Security Rod Monument with a 2-1/2" dia. domed survey cap and permanent magnet encased in a white PVC pipe with a NGS style aluminum access cover.



This document was prepared by Dan Corbin, Inc. on February 8, 2016 for Mills County, Iowa.