

Mills County, Iowa
 Horizontal Datum: **NAD 83(2011)** - Vertical Datum: **NAVD 1988**
 Iowa State Plane South Zone (1402)
 Iowa Regional Coordinate System, Zone 6 Council Bluffs
 US Survey Feet
2016

Point Name: **6**

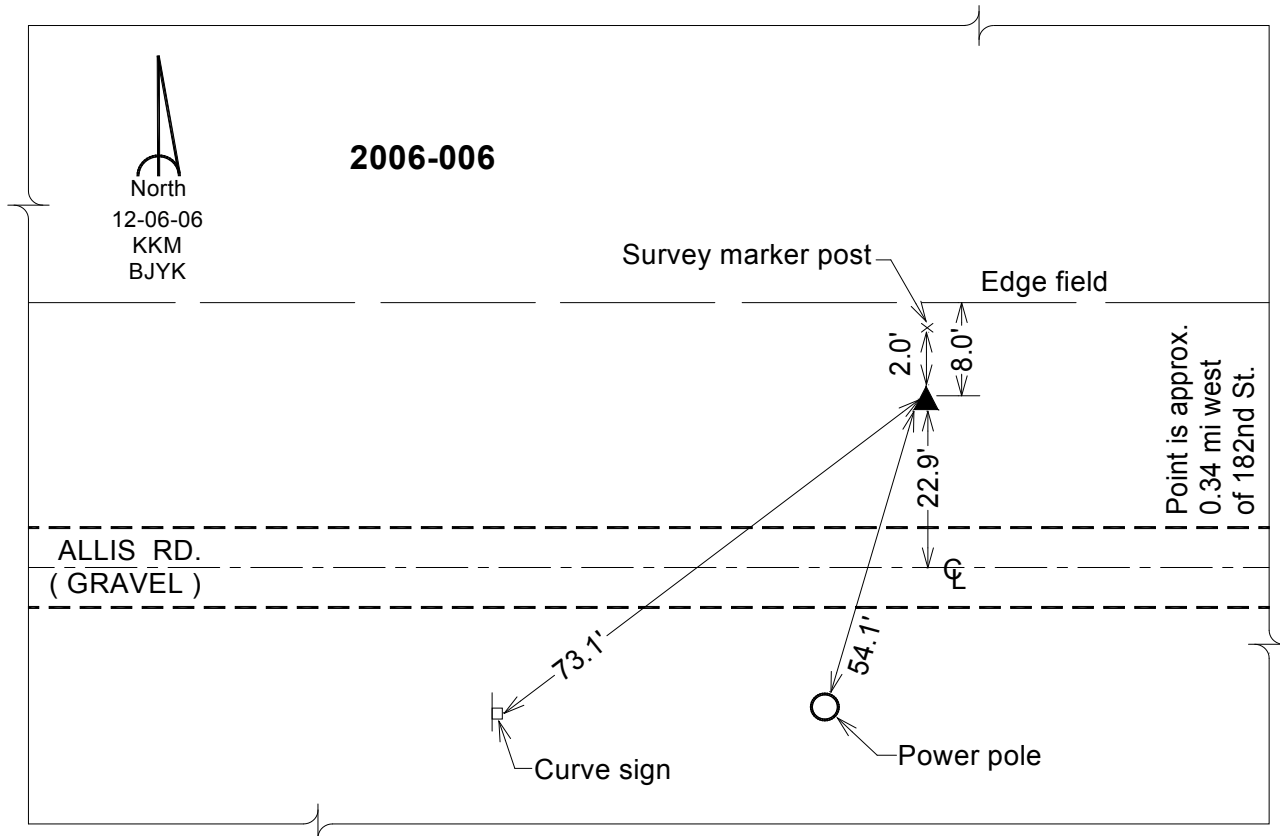
Designation: 2006-006 Mills Co GPS Control Pt.

NAD 83(NA2011) Latitude: **N41°07'12.93759"** Longitude: **W95°50'20.53216"**
 NAVD 88 Ortho Height: **965.382sft** Ellip. Ht: **875.567sft** Geoid12A

Iowa South Zone (1402) Northing: **416809.947sft** Easting: **996049.403sft**
 Mapping Angle: **-1°32'27"** Combination Scale Factor: **0.999907578**

laRCS Zone 6 Northing: **6917091.518sft** Easting: **16470874.284sft**
 Mapping Angle: **-00° 04' 10"** Combination Scale Factor: **0.999998029**

Monument Type: Berntsen Top Security Rod Monument with a 2-1/2" dia. domed survey cap and permanent magnet encased in a white PVC pipe with a NGS style aluminum access cover.



This document was prepared by Dan Corbin, Inc. on February 8, 2016 for Mills County, Iowa.