

Mills County, Iowa

Horizontal Datum: **NAD 83(2011)** - Vertical Datum: **NAVD 1988**

Iowa State Plane South Zone (1402)

Iowa Regional Coordinate System, Zone 6 Council Bluffs

US Survey Feet

2016

Point Name: **7**

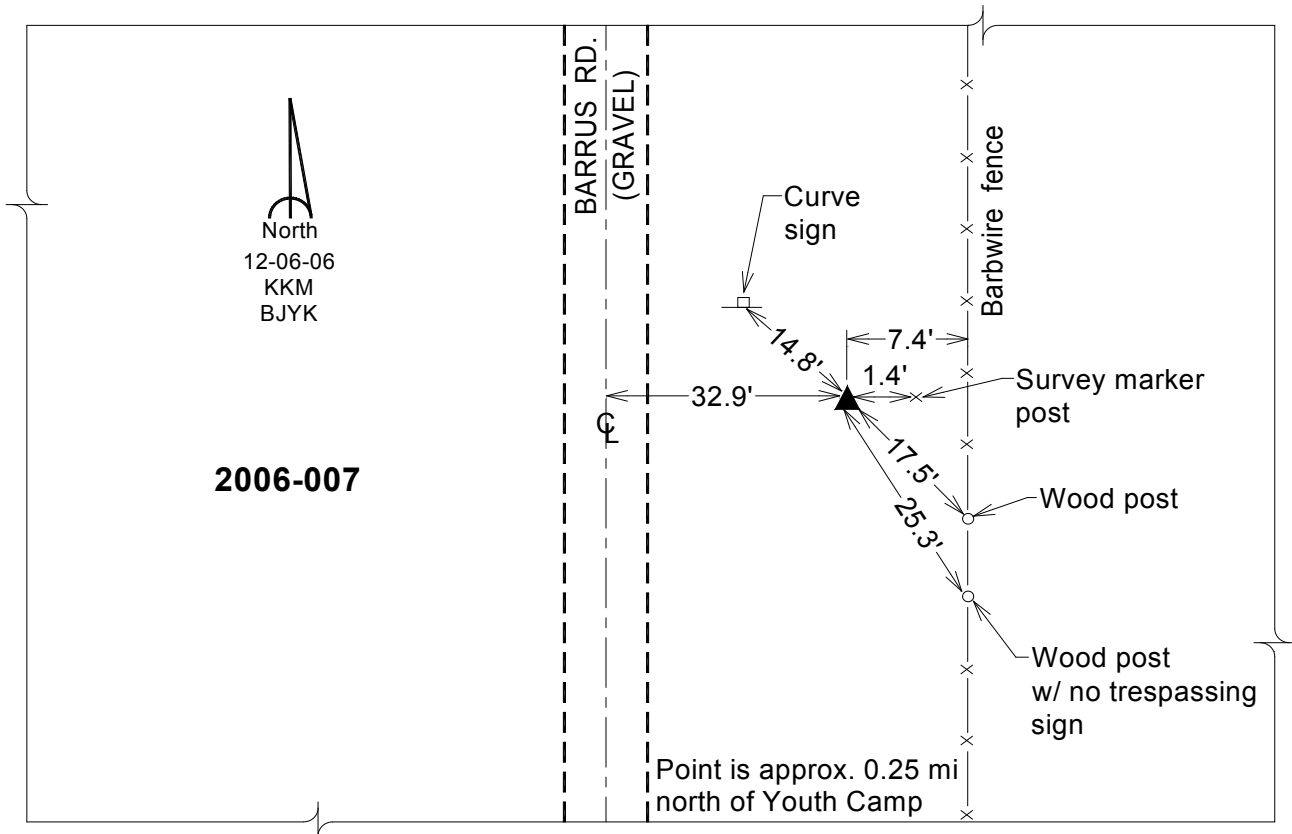
Designation: 2006-007 Mills Co GPS Control Pt.

NAD 83(NA2011) Latitude: **N41°07'12.89913"** Longitude: **W95°47'33.89204"**
NAVD 88 Ortho Height: **1297.316sft** Ellip. Ht: **1207.231sft** Geoid12A

Iowa South Zone (1402) Northing: **416466.541sft** Easting: **1008798.177sft**
Mapping Angle: **-1°30'37"** Combination Scale Factor: **0.999891754**

IaRCS Zone 6 Northing: **6917075.539sft** Easting: **16483628.823sft**
Mapping Angle: **-00° 02' 21"** Combination Scale Factor: **0.999981479**

Monument Type: Berntsen Top Security Rod Monument with a 2-1/2" dia. domed survey cap and permanent magnet encased in a white PVC pipe with a NGS style aluminum access cover.



This document was prepared by Dan Corbin, Inc. on February 8, 2016 for Mills County, Iowa.