

**Mills County, Iowa**  
 Horizontal Datum: **NAD 83(2011)** - Vertical Datum: **NAVD 1988**  
 Iowa State Plane South Zone (1402)  
 Iowa Regional Coordinate System, Zone 6 Council Bluffs  
 US Survey Feet  
**2016**

Point Name: **8**

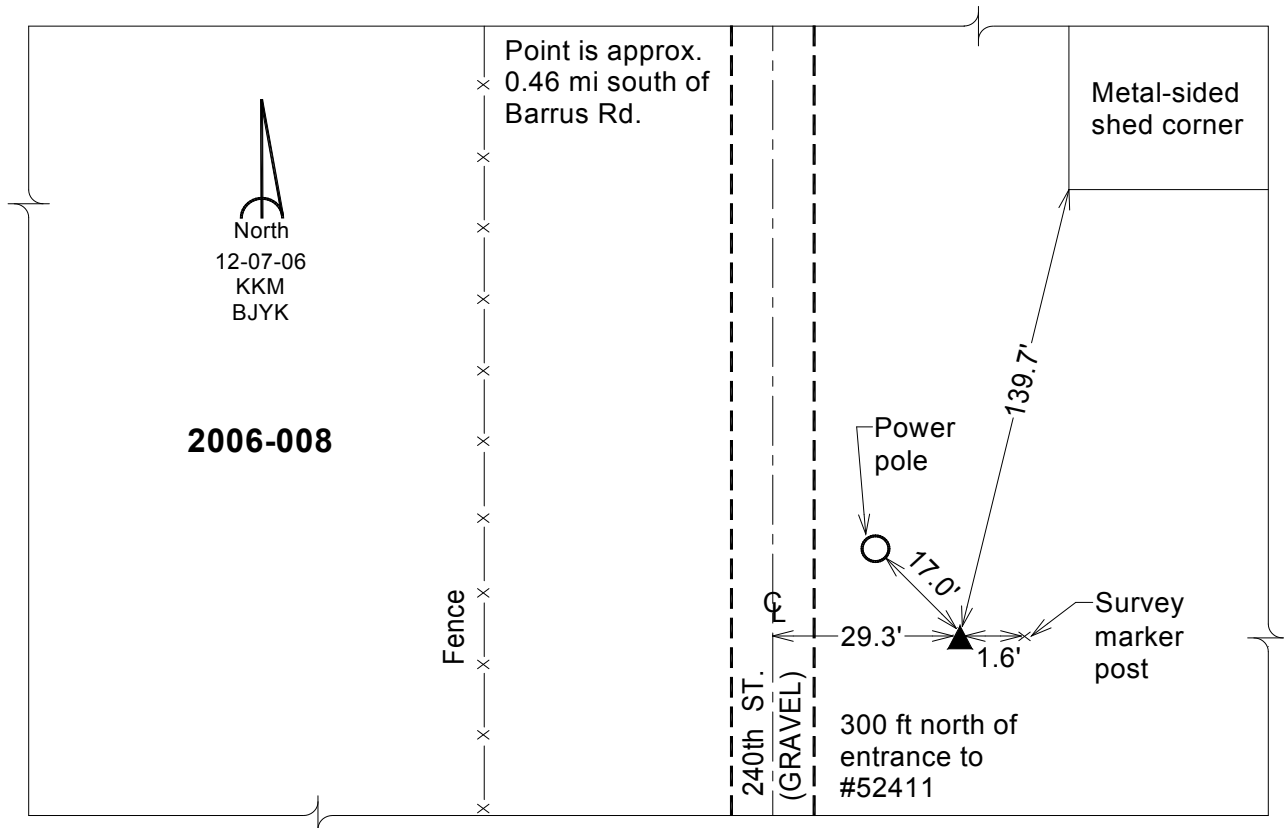
**Designation:** 2006-008 Mills Co GPS Control Pt.

NAD 83(NA2011) Latitude: **N41°07'27.57746"** Longitude: **W95°43'39.11741"**  
 NAVD 88 Ortho Height: **1103.398sft** Ellip. Ht: **1012.878sft** Geoid12A

**Iowa South Zone (1402)** Northing: **417484.757sft** Easting: **1026798.057sft**  
 Mapping Angle: **-1°28'02"** Combination Scale Factor: **0.999900930**

**IaRCS Zone 6** Northing: **6918555.666sft** Easting: **16501598.243sft**  
 Mapping Angle: **00° 00' 14"** Combination Scale Factor: **0.999990485**

**Monument Type:** Berntsen Top Security Rod Monument with a 2-1/2" dia. domed survey cap and permanent magnet encased in a white PVC pipe with a NGS style aluminum access cover.



*This document was prepared by Dan Corbin, Inc. on February 8, 2016 for Mills County, Iowa.*