

Mills County, Iowa
Horizontal Datum: **NAD 83(2011)** - Vertical Datum: **NAVD 1988**
Iowa State Plane South Zone (1402)
Iowa Regional Coordinate System, Zone 6 Council Bluffs
US Survey Feet
2016

Point Name: **9**

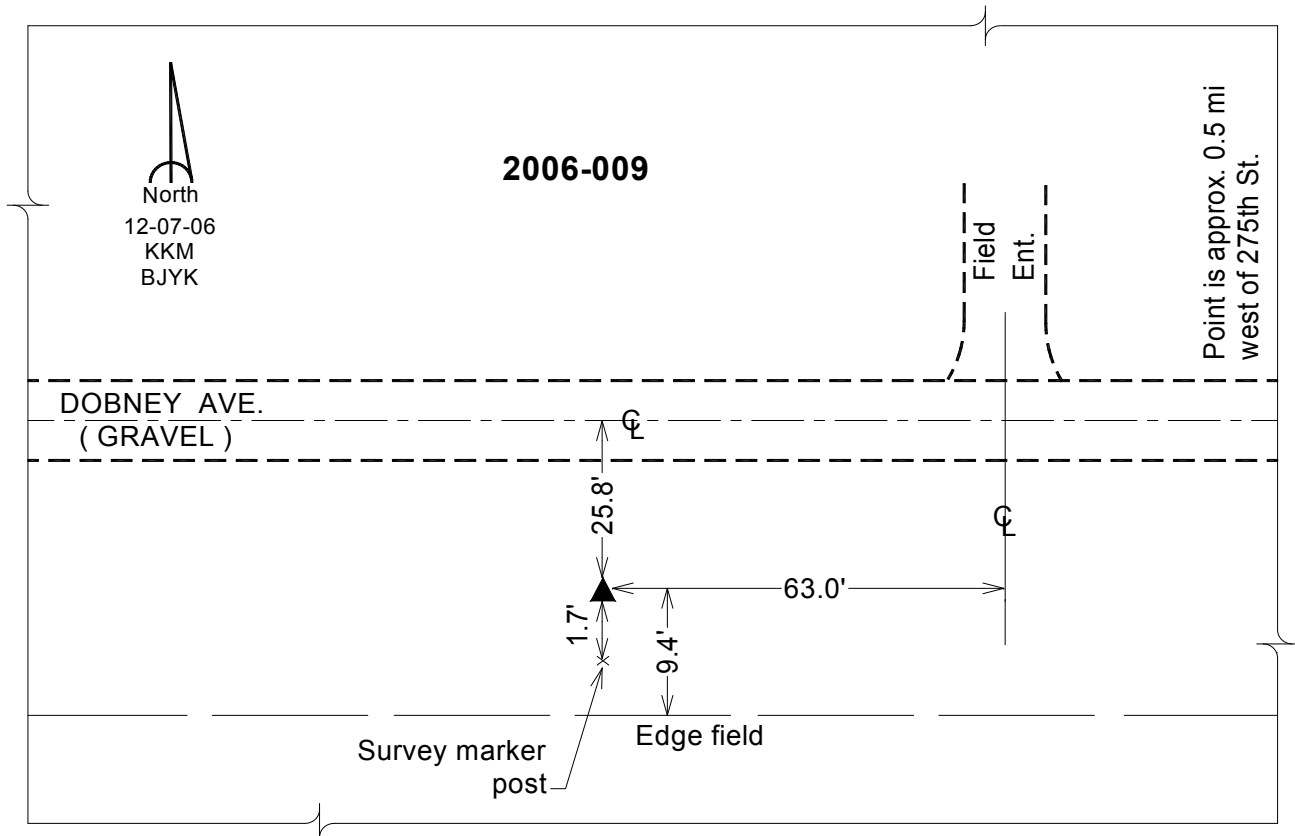
Designation: 2006-009 Mills Co GPS Control Pt.

NAD 83(NA2011) Latitude: **N41°07'00.49781"** Longitude: **W95°40'20.80114"**
NAVD 88 Ortho Height: **1225.943sft** Ellip. Ht: **1135.025sft** Geoid12A

Iowa South Zone (1402) Northing: **414361.201sft** Easting: **1041901.476sft**
Mapping Angle: **-1°25'52"** Combination Scale Factor: **0.999895285**

IaRCS Zone 6 Northing: **6915820.630sft** Easting: **16516778.235sft**
Mapping Angle: **00° 02' 24"** Combination Scale Factor: **0.999984953**

Monument Type: Berntsen Top Security Rod Monument with a 2-1/2" dia. domed survey cap and permanent magnet encased in a white PVC pipe with a NGS style aluminum access cover.



This document was prepared by Dan Corbin, Inc. on February 8, 2016 for Mills County, Iowa.