

**Mills County, Iowa**  
 Horizontal Datum: **NAD 83(2011)** - Vertical Datum: **NAVD 1988**  
 Iowa State Plane South Zone (1402)  
 Iowa Regional Coordinate System, Zone 6 Council Bluffs  
 US Survey Feet  
**2016**

Point Name: **10**

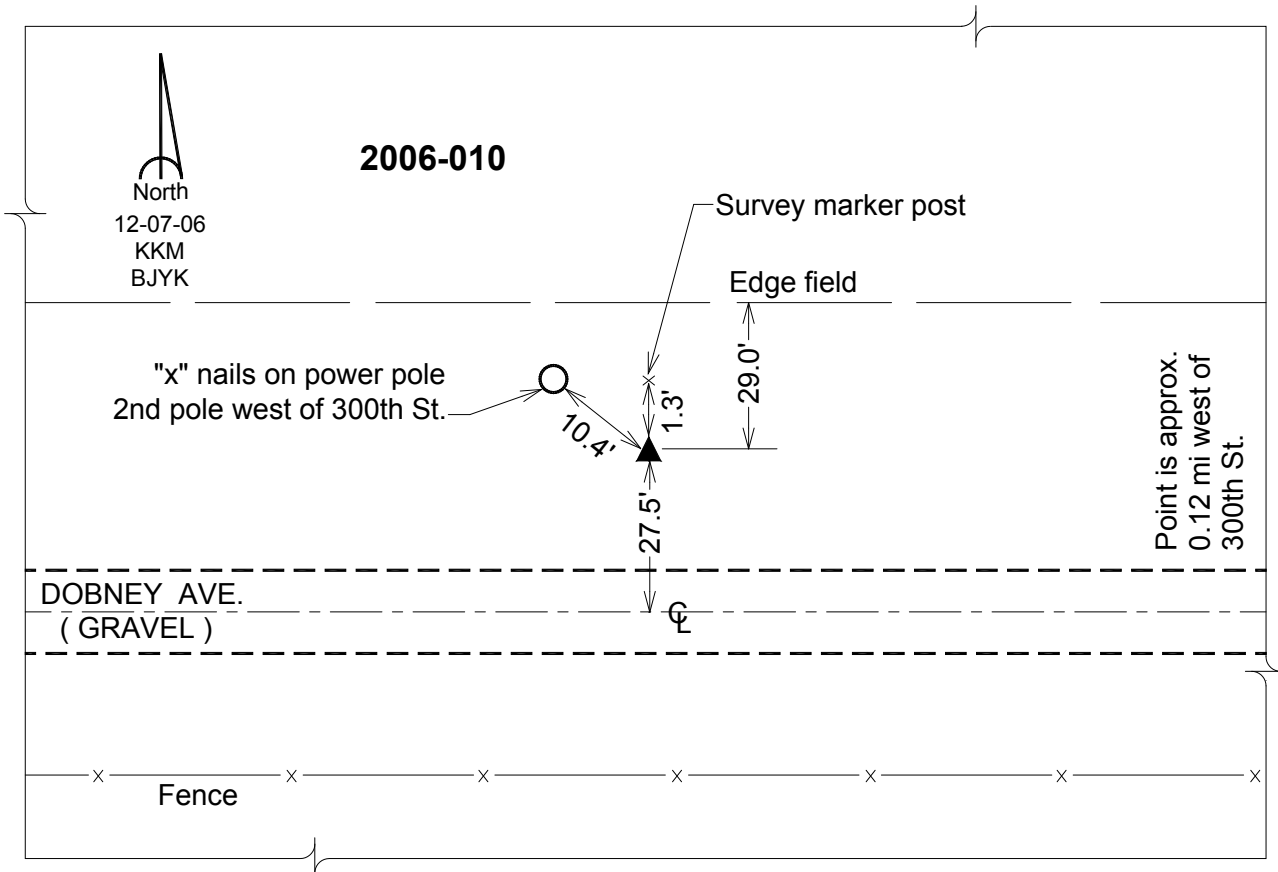
**Designation:** 2006-010 Mills Co GPS Control Pt.

NAD 83(NA2011) Latitude: **N41°07'00.35970"** Longitude: **W95°36'53.99525"**  
 NAVD 88 Ortho Height: **1159.415sft** Ellip. Ht: **1068.080sft** Geoid**12A**

**Iowa South Zone (1402)** Northing: **413957.175sft** Easting: **1057724.546sft**  
 Mapping Angle: **-1°23'35"** Combination Scale Factor: **0.999898480**

**IaRCS Zone 6** Northing: **6915822.932sft** Easting: **16532607.891sft**  
 Mapping Angle: **00° 04' 40"** Combination Scale Factor: **0.999989053**

**Monument Type:** Berntsen Top Security Rod Monument with a 2-1/2" dia. domed survey cap and permanent magnet encased in a white PVC pipe with a NGS style aluminum access cover.



*This document was prepared by Dan Corbin, Inc. on February 8, 2016 for Mills County, Iowa.*