

**Mills County, Iowa**  
 Horizontal Datum: **NAD 83(2011)** - Vertical Datum: **NAVD 1988**  
 Iowa State Plane South Zone (1402)  
 Iowa Regional Coordinate System, Zone 6 Council Bluffs  
 US Survey Feet  
**2016**

Point Name: **11**

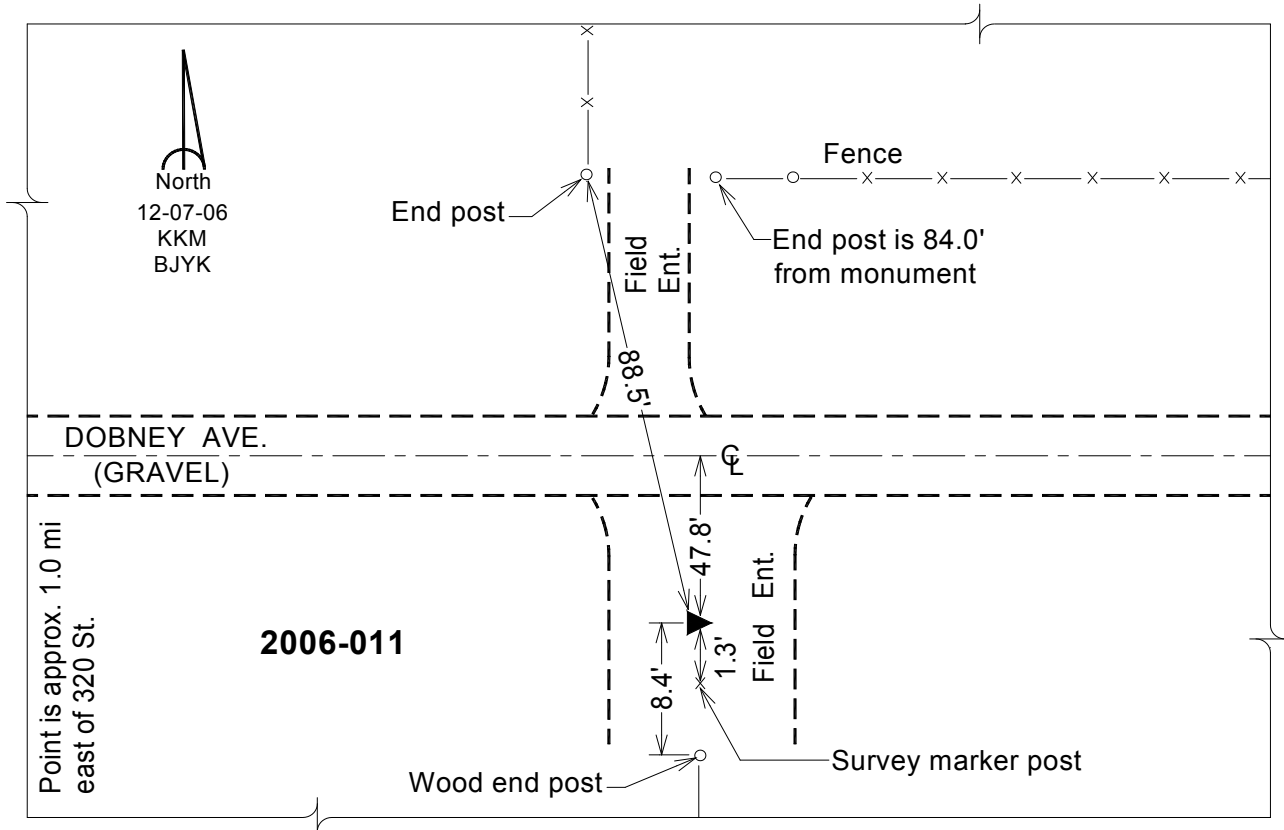
**Designation:** 2006-011 Mills Co GPS Control Pt.

NAD 83(NA2011) Latitude: **N41°06'59.68024"** Longitude: **W95°33'23.03072"**  
 NAVD 88 Ortho Height: **1218.899sft** Ellip. Ht: **1127.164sft** **Geoid12A**

**Iowa South Zone (1402)** Northing: **413501.302sft** Easting: **1073864.793sft**  
 Mapping Angle: **-1°21'16"** Combination Scale Factor: **0.999895666**

**IaRCS Zone 6** Northing: **6915781.523sft** Easting: **16548755.999sft**  
 Mapping Angle: **00° 06' 59"** Combination Scale Factor: **0.999987724**

**Monument Type:** Berntsen Top Security Rod Monument with a 2-1/2" dia. domed survey cap and permanent magnet encased in a white PVC pipe with a NGS style aluminum access cover.



*This document was prepared by Dan Corbin, Inc. on February 8, 2016 for Mills County, Iowa.*