

**Mills County, Iowa**  
Horizontal Datum: **NAD 83(2011)** - Vertical Datum: **NAVD 1988**  
Iowa State Plane South Zone (1402)  
Iowa Regional Coordinate System, Zone 6 Council Bluffs  
US Survey Feet  
**2016**

Point Name: **12**

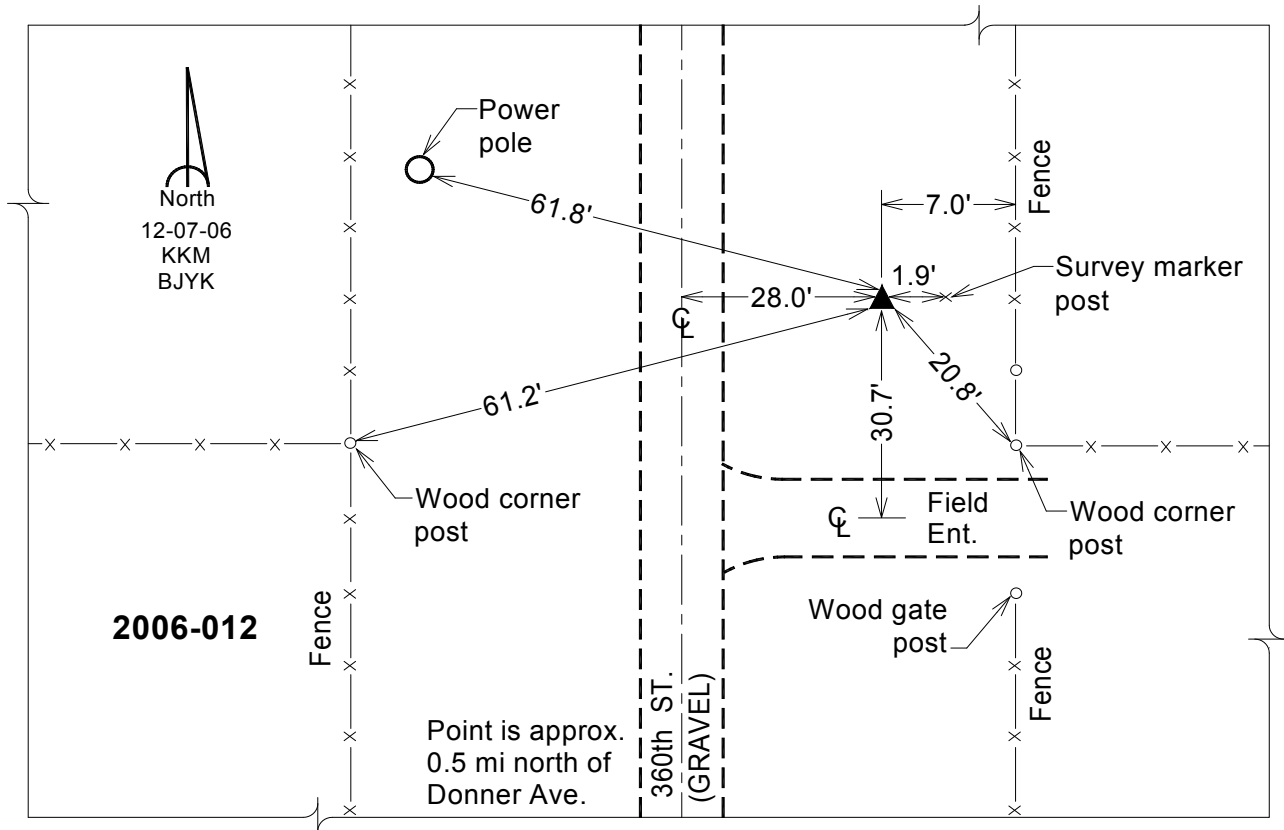
**Designation:** 2006-012 Mills Co GPS Control Pt.

NAD 83(NA2011) Latitude: **N41°07'00.34939"** Longitude: **W95°29'56.02737"**  
NAVD 88 Ortho Height: **1109.610sft** Ellip. Ht: **1017.485sft** Geoid12A

**Iowa South Zone (1402)** Northing: **413199.716sft** Easting: **1089705.429sft**  
Mapping Angle: **-1°19'00"** Combination Scale Factor: **0.999900894**

**IaRCS Zone 6** Northing: **6915886.655sft** Easting: **16564600.634sft**  
Mapping Angle: **00° 09' 15"** Combination Scale Factor: **0.999995031**

**Monument Type:** Berntsen Top Security Rod Monument with a 2-1/2" dia. domed survey cap and permanent magnet encased in a white PVC pipe with a NGS style aluminum access cover.



*This document was prepared by Dan Corbin, Inc. on February 8, 2016 for Mills County, Iowa.*