

Mills County, Iowa
Horizontal Datum: **NAD 83(2011)** - Vertical Datum: **NAVD 1988**
Iowa State Plane South Zone (1402)
Iowa Regional Coordinate System, Zone 6 Council Bluffs
US Survey Feet
2016

Point Name: **14**

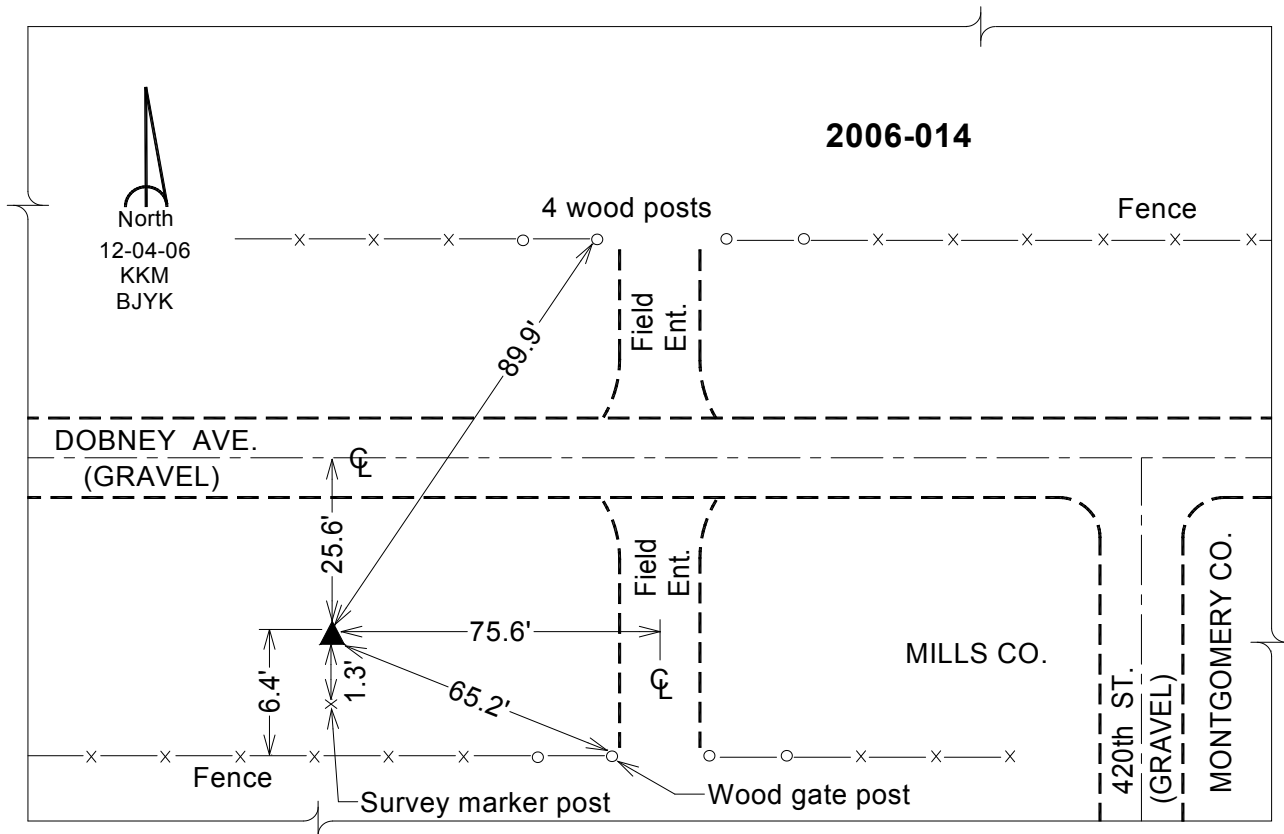
Designation: 2006-014 Mills Co GPS Control Pt.

NAD 83(NA2011) Latitude: **N41°07'00.87905"** Longitude: **W95°23'10.23224"**
NAVD 88 Ortho Height: **1186.909sft** Ellip. Ht: **1094.047sft** Geoid12A

Iowa South Zone (1402) Northing: **412559.763sft** Easting: **1120757.038sft**
Mapping Angle: **-1°14'33"** Combination Scale Factor: **0.999897237**

laRCS Zone 6 Northing: **6916043.933sft** Easting: **16595661.451sft**
Mapping Angle: **00° 13' 42"** Combination Scale Factor: **0.999997052**

Monument Type: Berntsen Top Security Rod Monument with a 2-1/2" dia. domed survey cap and permanent magnet encased in a white PVC pipe with a NGS style aluminum access cover.



This document was prepared by Dan Corbin, Inc. on February 8, 2016 for Mills County, Iowa.