

**Mills County, Iowa**  
 Horizontal Datum: **NAD 83(2011)** - Vertical Datum: **NAVD 1988**  
 Iowa State Plane South Zone (1402)  
 Iowa Regional Coordinate System, Zone 6 Council Bluffs  
 US Survey Feet  
**2016**

Point Name: **15**

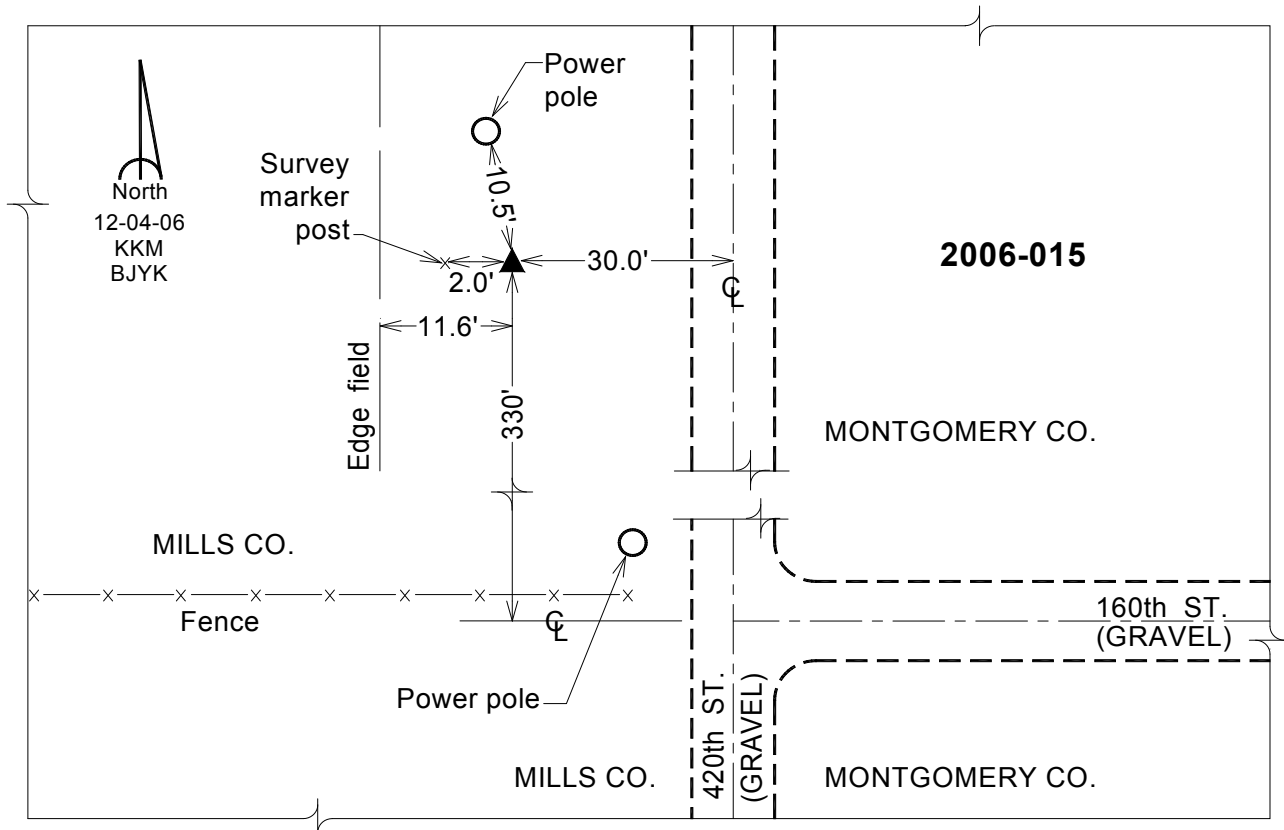
**Designation:** 2006-015 Mills Co GPS Control Pt.

NAD 83(NA2011) Latitude: **N41°04'27.11240"** Longitude: **W95°23'05.32880"**  
 NAVD 88 Ortho Height: **1233.292sft** Ellip. Ht: **1139.586sft** Geoid12A

**Iowa South Zone (1402)** Northing: **396993.361sft** Easting: **1120795.060sft**  
 Mapping Angle: **-1°14'30"** Combination Scale Factor: **0.999896428**

**laRCS Zone 6** Northing: **6900482.087sft** Easting: **16596099.006sft**  
 Mapping Angle: **00° 13' 44"** Combination Scale Factor: **0.999994966**

**Monument Type:** Berntsen Top Security Rod Monument with a 2-1/2" dia. domed survey cap and permanent magnet encased in a white PVC pipe with a NGS style aluminum access cover.



*This document was prepared by Dan Corbin, Inc. on February 8, 2016 for Mills County, Iowa.*