

**Mills County, Iowa**  
 Horizontal Datum: **NAD 83(2011)** - Vertical Datum: **NAVD 1988**  
 Iowa State Plane South Zone (1402)  
 Iowa Regional Coordinate System, Zone 6 Council Bluffs  
 US Survey Feet  
**2016**

Point Name: **17**

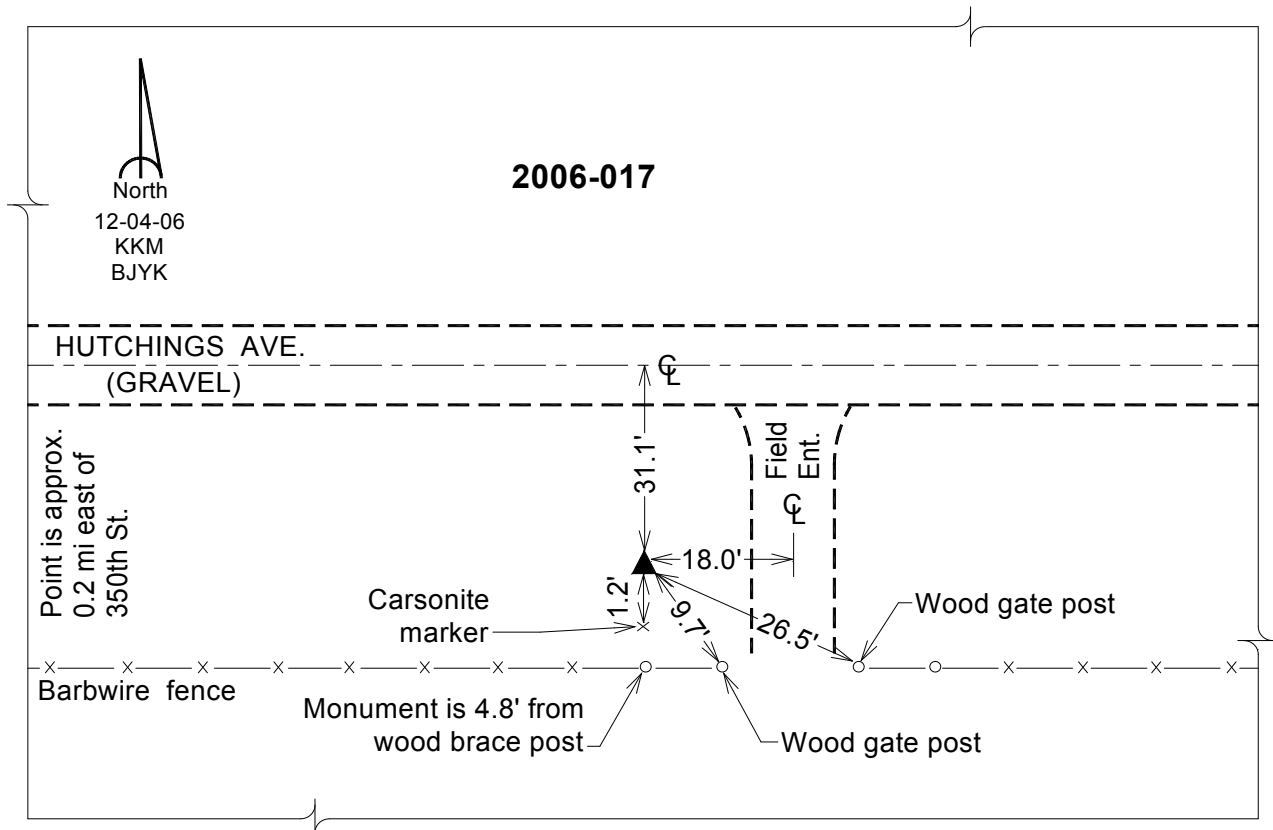
**Designation:** 2006-017 Mills Co GPS Control Pt.

NAD 83(NA2011) Latitude: **N41°03'34.70786"** Longitude: **W95°30'49.79346"**  
 NAVD 88 Ortho Height: **1076.317sft** Ellip. Ht: **983.446sft** Geoid12A

**Iowa South Zone (1402)** Northing: **392488.319sft** Easting: **1085109.654sft**  
 Mapping Angle: **-1°19'35"** Combination Scale Factor: **0.999904469**

**laRCS Zone 6** Northing: **6895062.182sft** Easting: **16560537.591sft**  
 Mapping Angle: **00° 08' 39"** Combination Scale Factor: **0.999996079**

**Monument Type:** Berntsen Top Security Rod Monument with a 2-1/2" dia. domed survey cap and permanent magnet encased in a white PVC pipe with a NGS style aluminum access cover.



*This document was prepared by Dan Corbin, Inc. on February 8, 2016 for Mills County, Iowa.*