

Mills County, Iowa
Horizontal Datum: **NAD 83(2011)** - Vertical Datum: **NAVD 1988**
Iowa State Plane South Zone (1402)
Iowa Regional Coordinate System, Zone 6 Council Bluffs
US Survey Feet
2016

Point Name: **18**

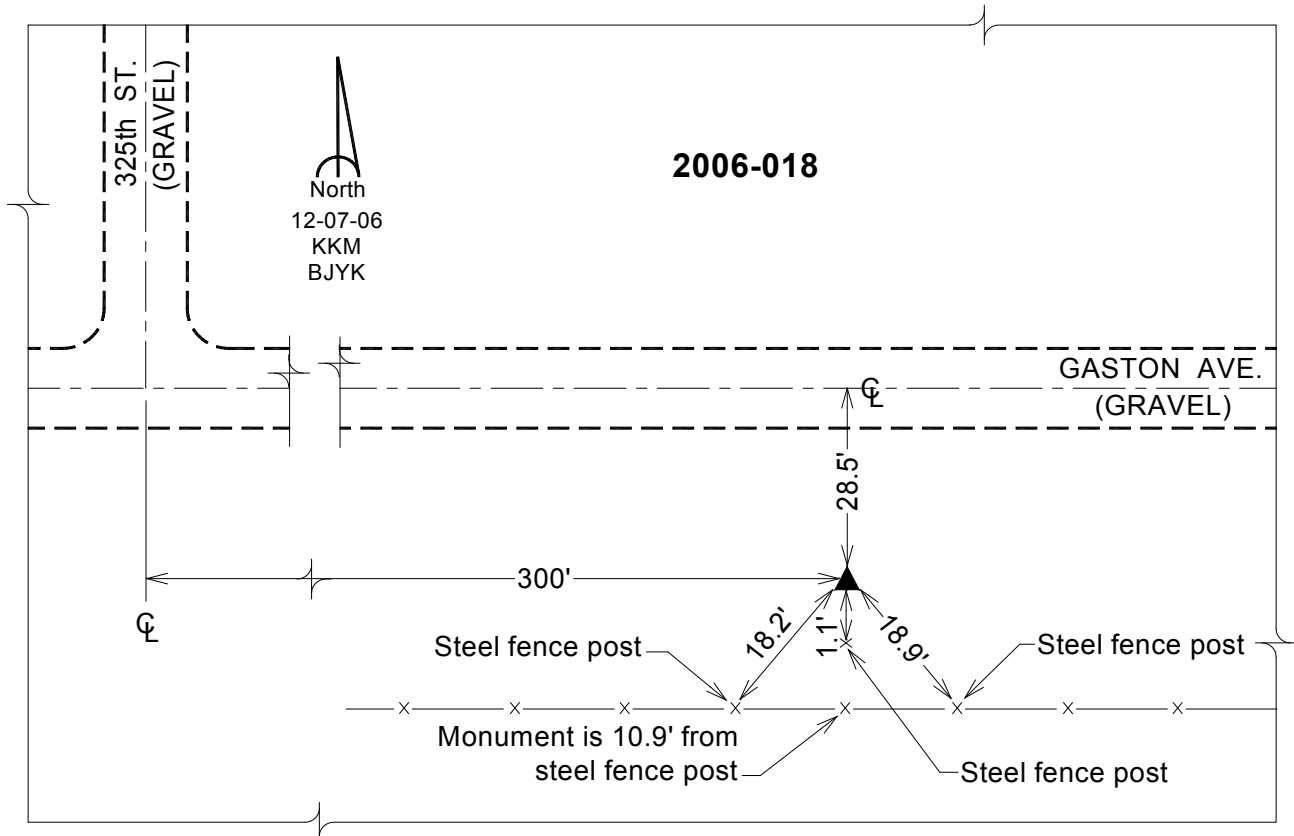
Designation: 2006-018 Mills Co GPS Control Pt.

NAD 83(NA2011) Latitude: **N41°04'23.30081"** Longitude: **W95°33'53.10093"**
NAVD 88 Ortho Height: **1205.905sft** Ellip. Ht: **1113.734sft** Geoid**12A**

Iowa South Zone (1402) Northing: **397733.931sft** Easting: **1071188.319sft**
Mapping Angle: **-1°21'36"** Combination Scale Factor: **0.999897703**

laRCS Zone 6 Northing: **6899949.197sft** Easting: **16546484.924sft**
Mapping Angle: **00° 06' 39"** Combination Scale Factor: **0.999988120**

Monument Type: Berntsen Top Security Rod Monument with a 2-1/2" dia. domed survey cap and permanent magnet encased in a white PVC pipe with a NGS style aluminum access cover.



This document was prepared by Dan Corbin, Inc. on February 8, 2016 for Mills County, Iowa.