

Mills County, Iowa
 Horizontal Datum: **NAD 83(2011)** - Vertical Datum: **NAVD 1988**
 Iowa State Plane South Zone (1402)
 Iowa Regional Coordinate System, Zone 6 Council Bluffs
 US Survey Feet
2016

Point Name: **19**

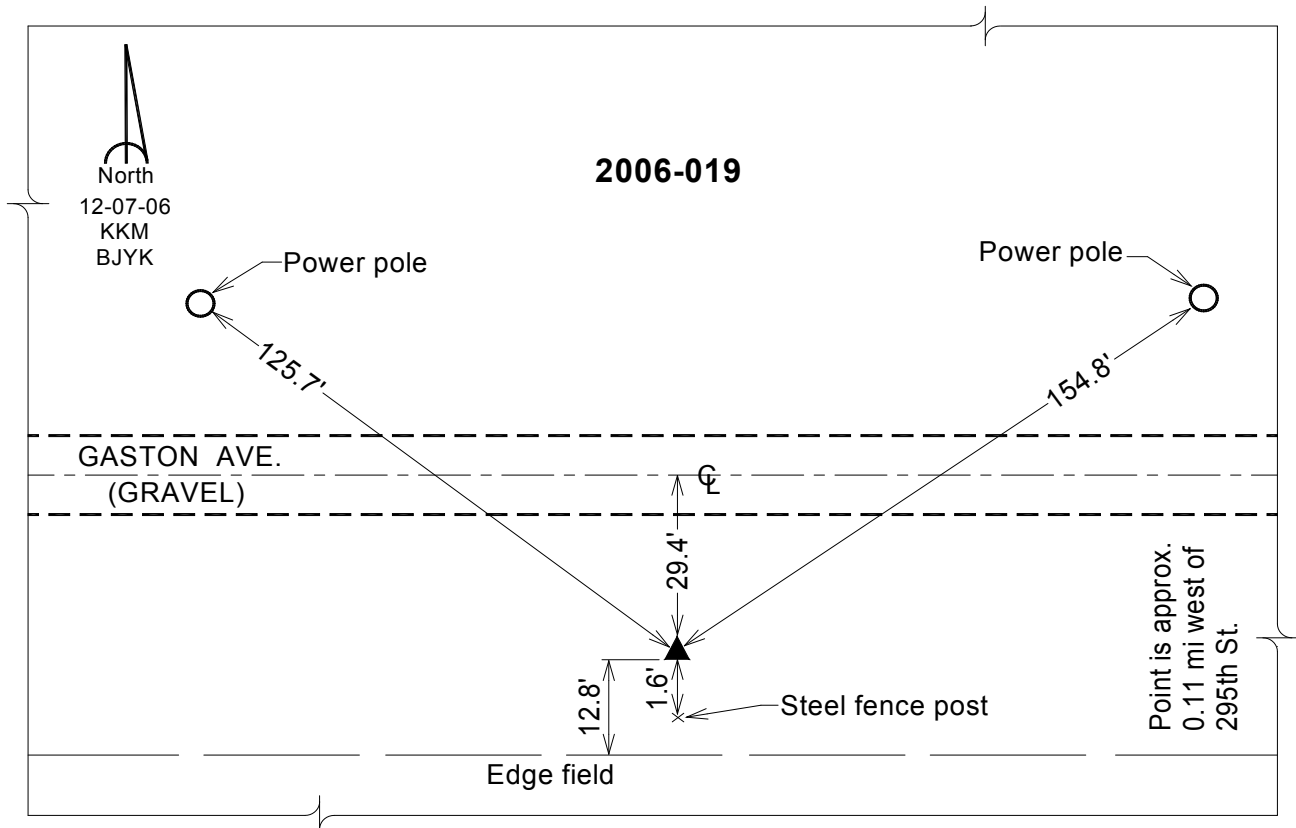
Designation: 2006-019 Mills Co GPS Control Pt.

NAD 83(NA2011) Latitude: **N41°04'23.33280"** Longitude: **W95°37'30.61517"**
 NAVD 88 Ortho Height: **1105.556sft** Ellip. Ht: **1013.914sft** Geoid12A

Iowa South Zone (1402) Northing: **398138.352sft** Easting: **1054534.382sft**
 Mapping Angle: **-1°23'59"** Combination Scale Factor: **0.999902465**

laRCS Zone 6 Northing: **689925.999sft** Easting: **16529824.596sft**
 Mapping Angle: **00° 04' 16"** Combination Scale Factor: **0.999991449**

Monument Type: Berntsen Top Security Rod Monument with a 2-1/2" dia. domed survey cap and permanent magnet encased in a white PVC pipe with a NGS style aluminum access cover.



This document was prepared by Dan Corbin, Inc. on February 8, 2016 for Mills County, Iowa.