

Mills County, Iowa
 Horizontal Datum: **NAD 83(2011)** - Vertical Datum: **NAVD 1988**
 Iowa State Plane South Zone (1402)
 Iowa Regional Coordinate System, Zone 6 Council Bluffs
 US Survey Feet
2016

Point Name: **20**

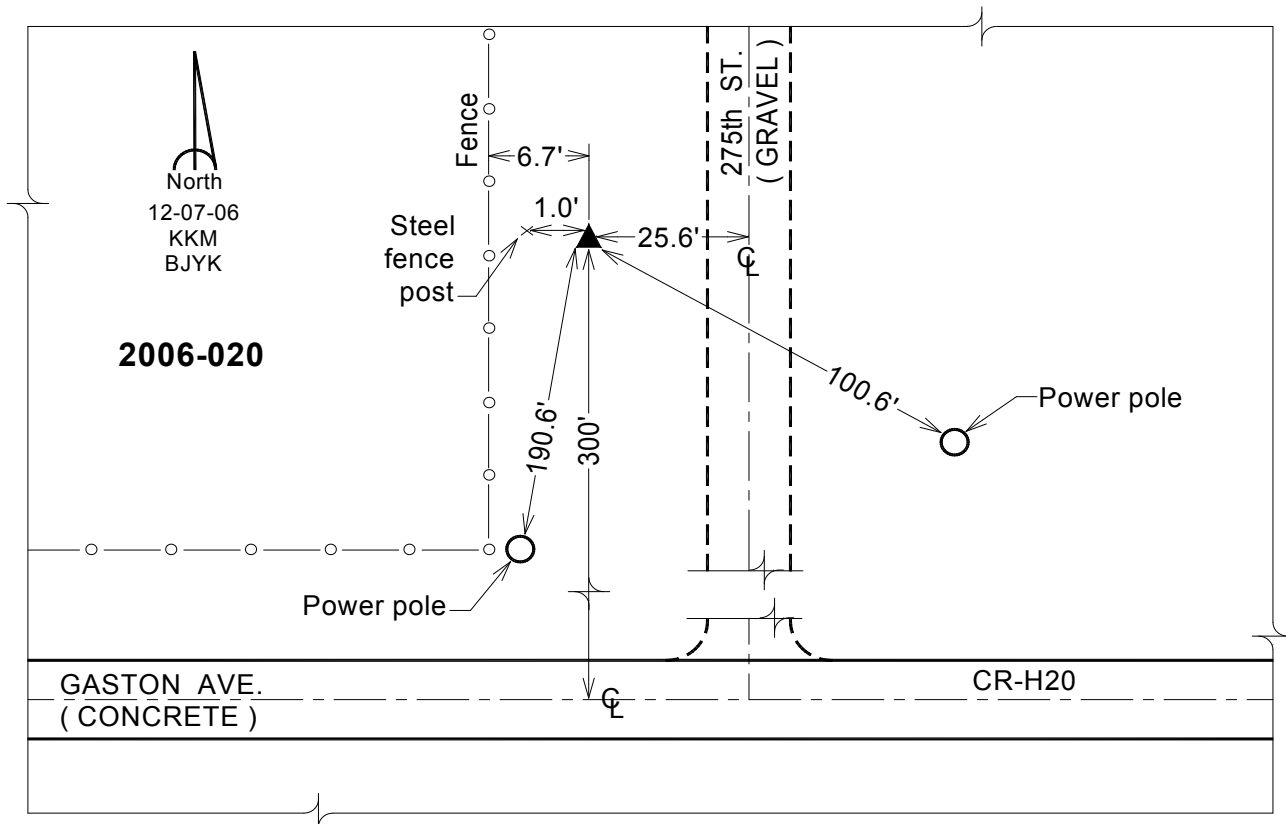
Designation: 2006-020 Mills Co GPS Control Pt.

NAD 83(NA2011) Latitude: **N41°04'26.16331"** Longitude: **W95°39'40.97699"**
 NAVD 88 Ortho Height: **1195.851sft** Ellip. Ht: **1104.537sft** Geoid12A

Iowa South Zone (1402) Northing: **398670.709sft** Easting: **1044560.459sft**
 Mapping Angle: **-1°25'25"** Combination Scale Factor: **0.999898111**

laRCS Zone 6 Northing: **6900202.173sft** Easting: **16519839.407sft**
 Mapping Angle: **00° 02' 50"** Combination Scale Factor: **0.999986541**

Monument Type: Berntsen Top Security Rod Monument with a 2-1/2" dia. domed survey cap and permanent magnet encased in a white PVC pipe with a NGS style aluminum access cover.



This document was prepared by Dan Corbin, Inc. on February 8, 2016 for Mills County, Iowa.