

**Mills County, Iowa**  
Horizontal Datum: **NAD 83(2011)** - Vertical Datum: **NAVD 1988**  
Iowa State Plane South Zone (1402)  
Iowa Regional Coordinate System, Zone 6 Council Bluffs  
US Survey Feet  
**2016**

Point Name: **21**

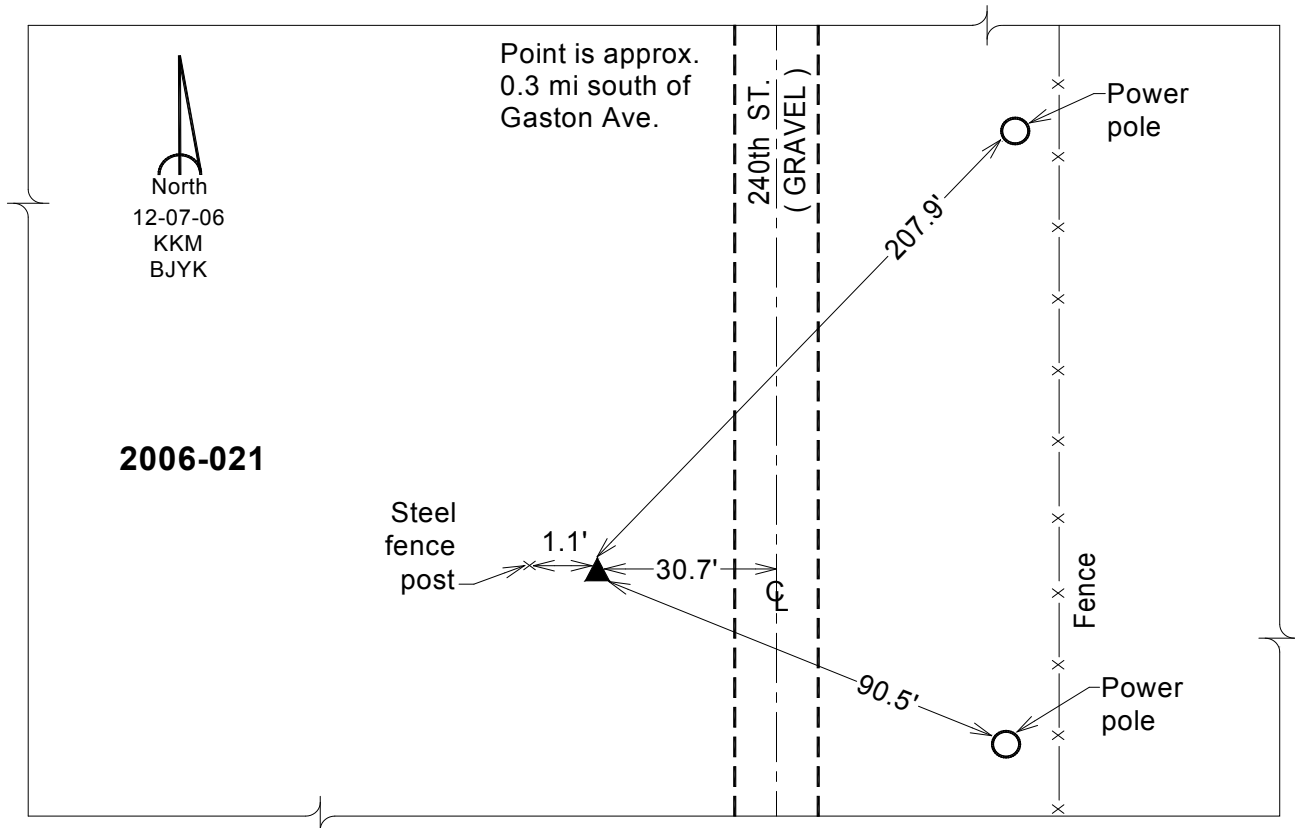
**Designation:** 2006-021 Mills Co GPS Control Pt.

NAD 83(NA2011) Latitude: **N41°04'07.64451"** Longitude: **W95°43'40.18445"**  
NAVD 88 Ortho Height: **1114.428sft** Ellip. Ht: **1023.590sft** Geoid12A

**Iowa South Zone (1402)** Northing: **397259.309sft** Easting: **1026198.239sft**  
Mapping Angle: **-1°28'03"** Combination Scale Factor: **0.999902175**

**IaRCS Zone 6** Northing: **6898319.687sft** Easting: **16501517.855sft**  
Mapping Angle: **00° 00' 13"** Combination Scale Factor: **0.999989971**

**Monument Type:** Berntsen Top Security Rod Monument with a 2-1/2" dia. domed survey cap and permanent magnet encased in a white PVC pipe with a NGS style aluminum access cover.



*This document was prepared by Dan Corbin, Inc. on February 8, 2016 for Mills County, Iowa.*