

Mills County, Iowa

Horizontal Datum: **NAD 83(2011)** - Vertical Datum: **NAVD 1988**

Iowa State Plane South Zone (1402)

Iowa Regional Coordinate System, Zone 6 Council Bluffs

US Survey Feet

2016

Point Name: **22**

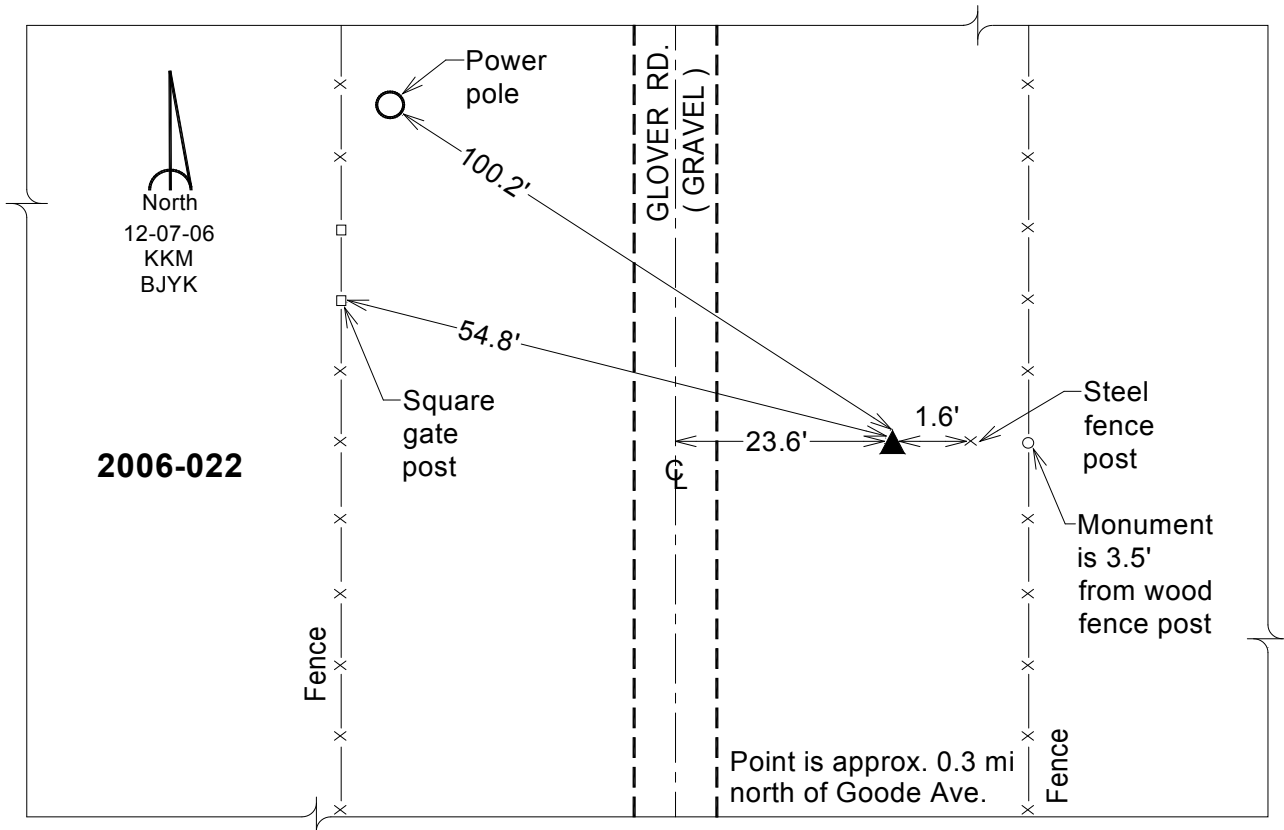
Designation: 2006-022 Mills Co GPS Control Pt.

NAD 83(NA2011) Latitude: **N41°04'31.25963"** Longitude: **W95°46'46.82910"**
NAVD 88 Ortho Height: **1196.182sft** Ellip. Ht: **1105.801sft** Geoid12A

Iowa South Zone (1402) Northing: **400018.805sft** Easting: **1011970.096sft**
Mapping Angle: **-1°30'06"** Combination Scale Factor: **0.999897996**

laRCS Zone 6 Northing: **6900713.200sft** Easting: **16487222.296sft**
Mapping Angle: **-00° 01' 50"** Combination Scale Factor: **0.999986217**

Monument Type: Berntsen Top Security Rod Monument with a 2-1/2" dia. domed survey cap and permanent magnet encased in a white PVC pipe with a NGS style aluminum access cover.



This document was prepared by Dan Corbin, Inc. on February 8, 2016 for Mills County, Iowa.