

Mills County, Iowa
 Horizontal Datum: **NAD 83(2011)** - Vertical Datum: **NAVD 1988**
 Iowa State Plane South Zone (1402)
 Iowa Regional Coordinate System, Zone 6 Council Bluffs
 US Survey Feet
2016

Point Name: **24 (Replaced by 66)**

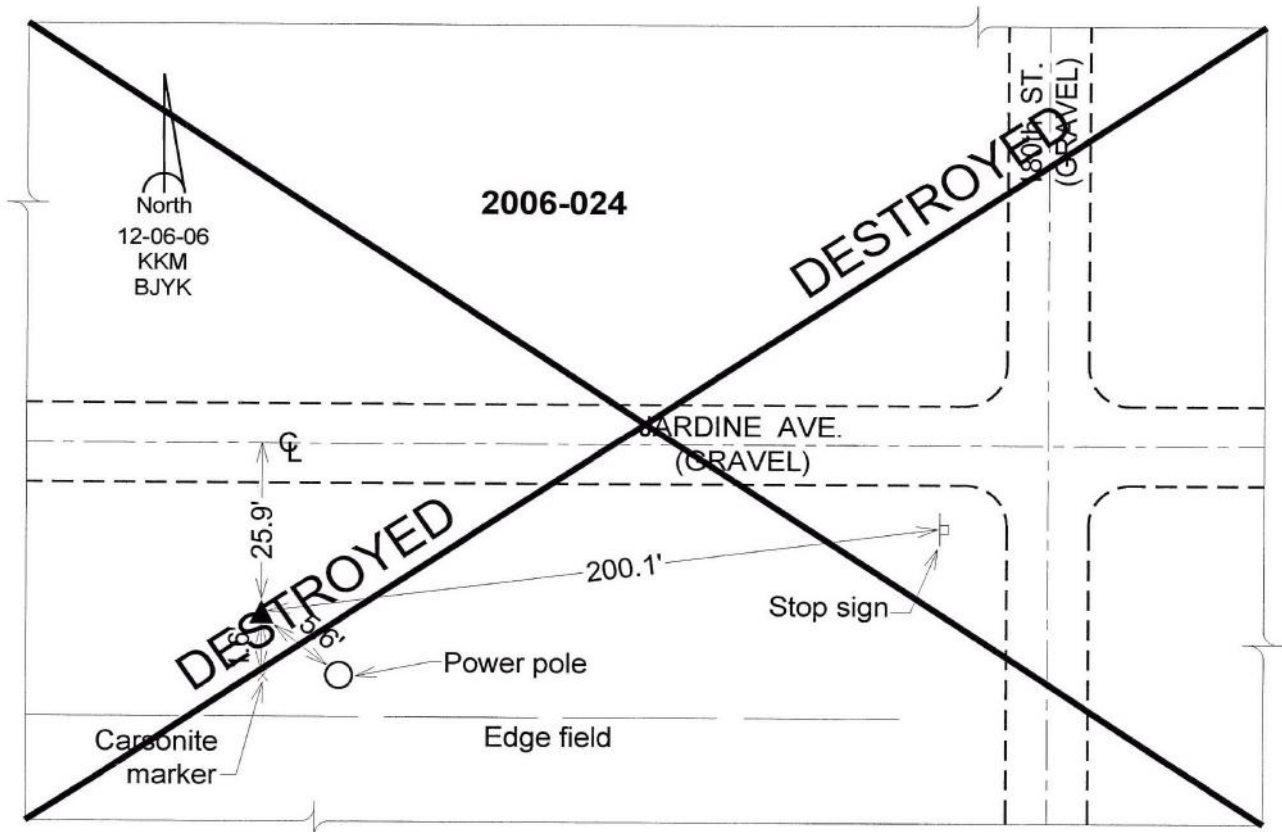
Designation: 2006-024 Mills Co GPS Control Pt.

NAD 83(NA2011) Latitude: **N41°01'49.98870"** Longitude: **W95°50'34.60659"**
 NAVD 88 Ortho Height: **954.119sft** Ellip. Ht: **864.153sft** Geoid03

~~Iowa South Zone (1402) Northing: 384166.904sft Easting: 994092.385sft~~
~~Mapping Angle: -1°32'36" Combination Scale Factor: 0.999911530~~

laRCS Zone 6 Northing: **n/a** Easting: **n/a**
 Mapping Angle: **n/a** Combination Scale Factor: **n/a**

Monument Type: Berntsen Top Security Rod Monument with a 2-1/2" dia. domed survey cap and permanent magnet encased in a white PVC pipe with a NGS style aluminum access cover.



This document was prepared by Dan Corbin, Inc. on February 8, 2016 for Mills County, Iowa.