

Mills County, Iowa

Horizontal Datum: **NAD 83(2011)** - Vertical Datum: **NAVD 1988**

Iowa State Plane South Zone (1402)

Iowa Regional Coordinate System, Zone 6 Council Bluffs

US Survey Feet

2016

Point Name: **25**

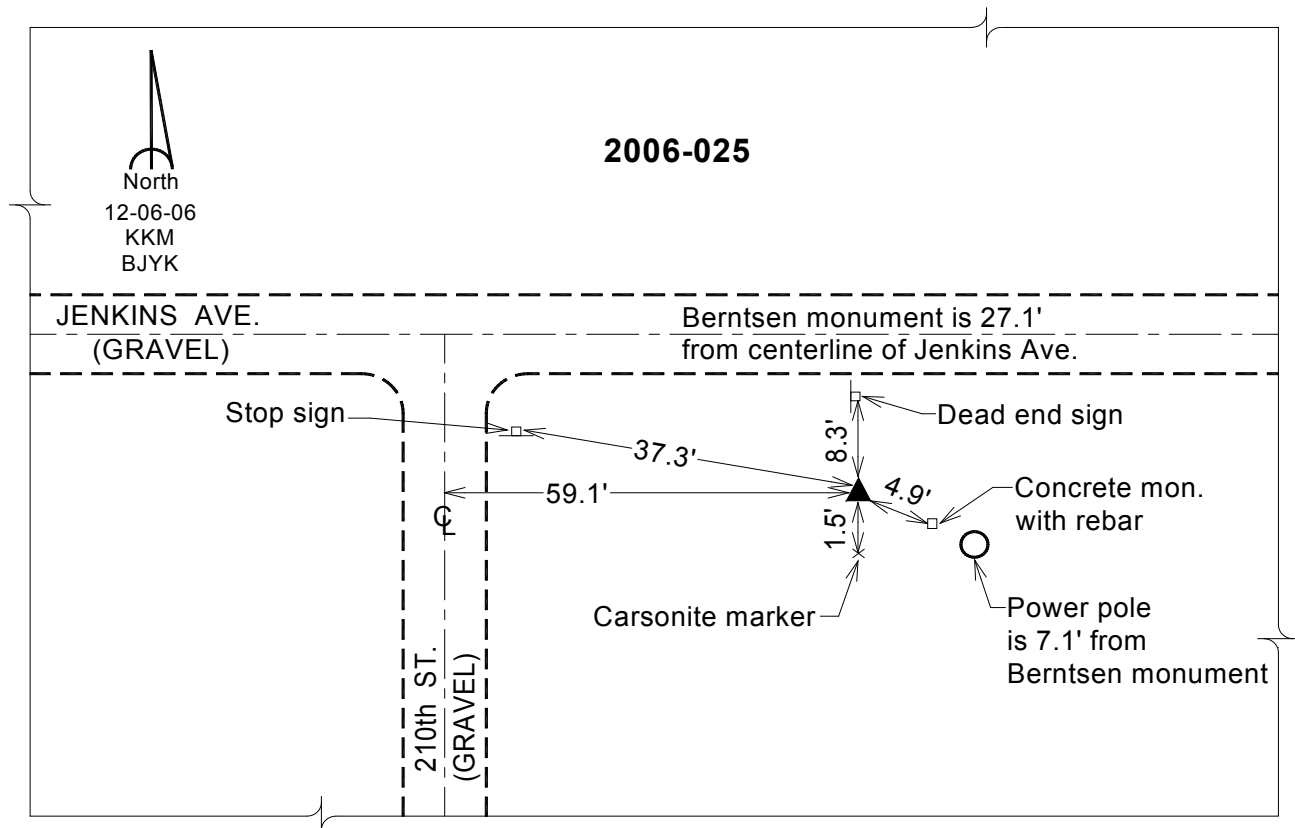
Designation: 2006-025 Mills Co GPS Control Pt.

NAD 83(NA2011) Latitude: **N41°01'24.21334"** Longitude: **W95°47'05.18939"**
NAVD 88 Ortho Height: **954.201sft** Ellip. Ht: **863.449sft** Geoid12A

Iowa South Zone (1402) Northing: **381132.362sft** Easting: **1010067.289sft**
Mapping Angle: **-1°30'18"** Combination Scale Factor: **0.999911945**

laRCS Zone 6 Northing: **6881782.476sft** Easting: **16485804.890sft**
Mapping Angle: **-00° 02' 02"** Combination Scale Factor: **0.999997869**

Monument Type: Berntsen Top Security Rod Monument with a 2-1/2" dia. domed survey cap and permanent magnet encased in a white PVC pipe with a NGS style aluminum access cover.



This document was prepared by Dan Corbin, Inc. on February 8, 2016 for Mills County, Iowa.