

Mills County, Iowa
 Horizontal Datum: **NAD 83(2011)** - Vertical Datum: **NAVD 1988**
 Iowa State Plane South Zone (1402)
 Iowa Regional Coordinate System, Zone 6 Council Bluffs
 US Survey Feet
2016

Point Name: **26**

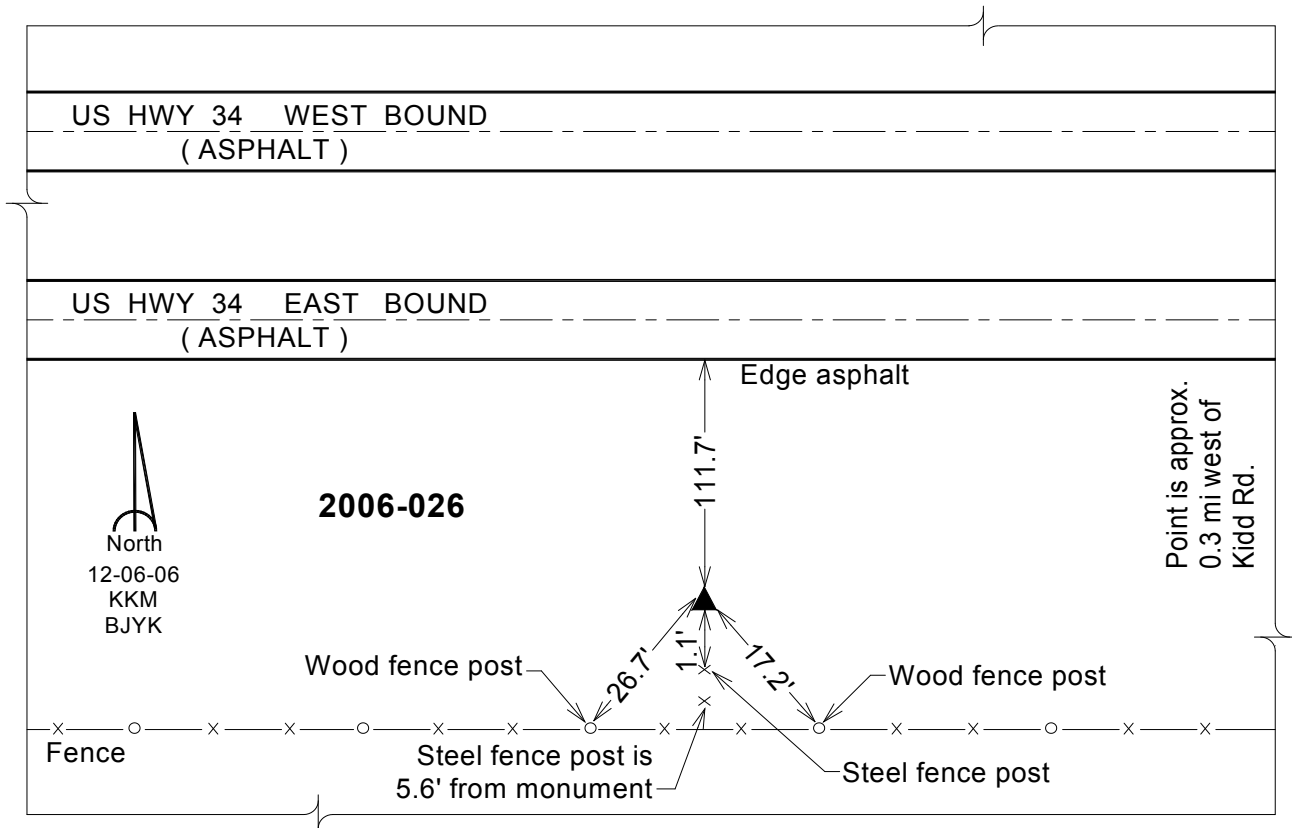
Designation: 2006-026 Mills Co GPS Control Pt.

NAD 83(NA2011) Latitude: **N41°01'49.33299"** Longitude: **W95°43'11.74828"**
 NAVD 88 Ortho Height: **1162.136sft** Ellip. Ht: **1070.901sft** Geoid12A

Iowa South Zone (1402) Northing: **383210.488sft** Easting: **1028018.321sft**
 Mapping Angle: **-1°27'44"** Combination Scale Factor: **0.999901679**

laRCS Zone 6 Northing: **6884321.002sft** Easting: **16503698.193sft**
 Mapping Angle: **00° 00' 32"** Combination Scale Factor: **0.999987718**

Monument Type: Berntsen Top Security Rod Monument with a 2-1/2" dia. domed survey cap and permanent magnet encased in a white PVC pipe with a NGS style aluminum access cover.



This document was prepared by Dan Corbin, Inc. on February 8, 2016 for Mills County, Iowa.