

Mills County, Iowa
Horizontal Datum: **NAD 83(2011)** - Vertical Datum: **NAVD 1988**
Iowa State Plane South Zone (1402)
Iowa Regional Coordinate System, Zone 6 Council Bluffs
US Survey Feet
2016

Point Name: **27**

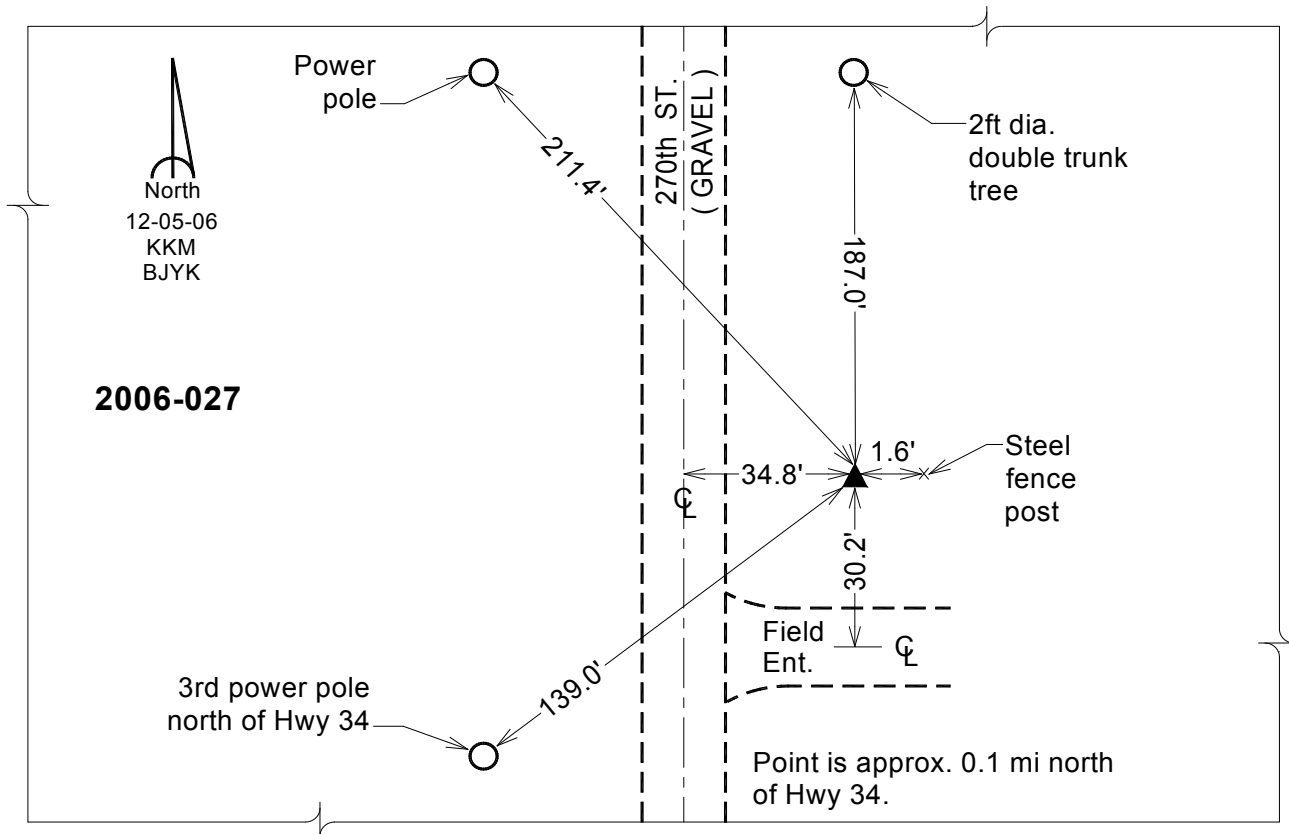
Designation: 2006-027 Mills Co GPS Control Pt.

NAD 83(NA2011) Latitude: **N41°01'57.09398"** Longitude: **W95°40'15.15522"**
NAVD 88 Ortho Height: **1206.438sft** Ellip. Ht: **1114.789sft** Geoid12A

Iowa South Zone (1402) Northing: **383654.142sft** Easting: **1041567.201sft**
Mapping Angle: **-1°25'48"** Combination Scale Factor: **0.999899475**

laRCS Zone 6 Northing: **6885112.394sft** Easting: **16517232.388sft**
Mapping Angle: **00° 02' 28"** Combination Scale Factor: **0.999985939**

Monument Type: Berntsen Top Security Rod Monument with a 2-1/2" dia. domed survey cap and permanent magnet encased in a white PVC pipe with a NGS style aluminum access cover.



This document was prepared by Dan Corbin, Inc. on February 8, 2016 for Mills County, Iowa.