

**Mills County, Iowa**

Horizontal Datum: **NAD 83(2011)** - Vertical Datum: **NAVD 1988**

Iowa State Plane South Zone (1402)

Iowa Regional Coordinate System, Zone 6 Council Bluffs

US Survey Feet

**2016**

Point Name: **28**

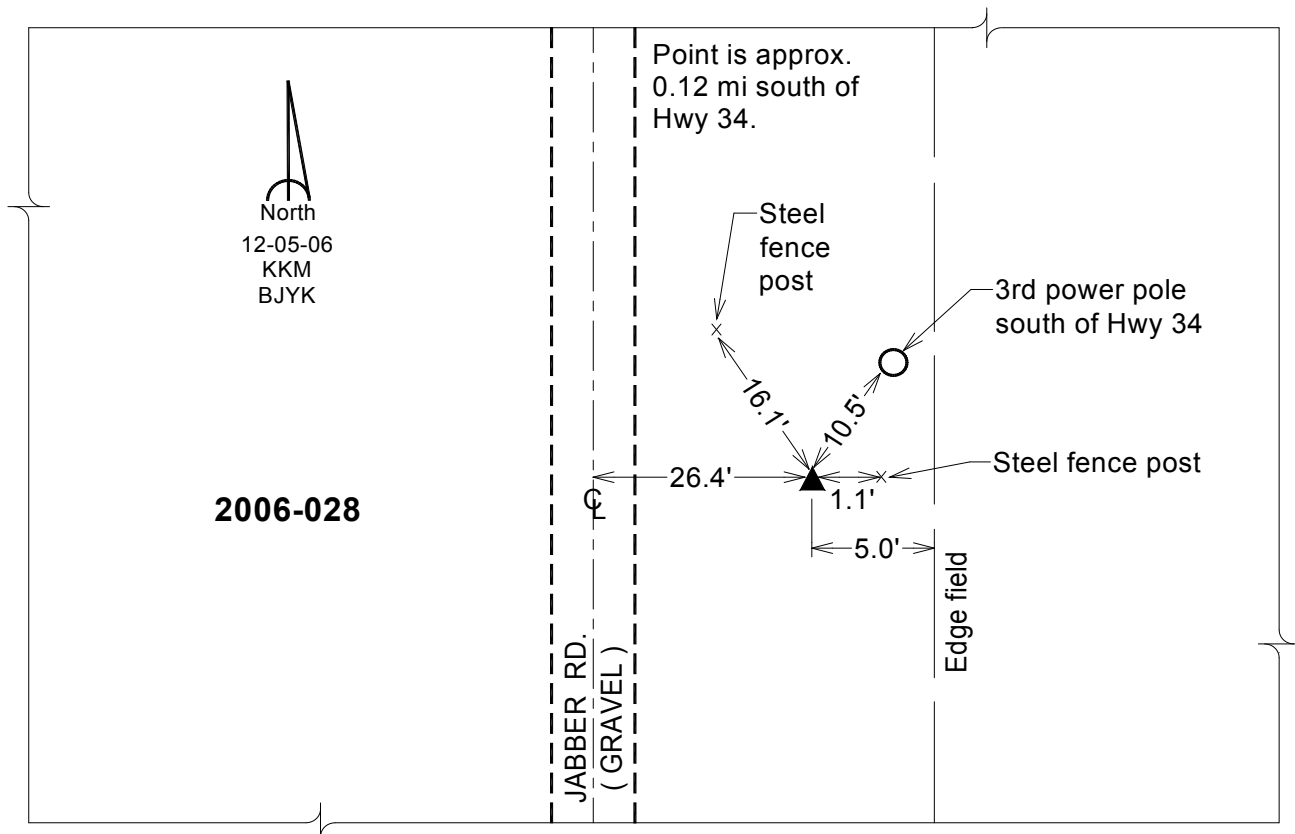
**Designation:** 2006-028 Mills Co GPS Control Pt.

NAD 83(NA2011) Latitude: **N41°01'42.88185"** Longitude: **W95°36'49.48060"**  
NAVD 88 Ortho Height: **1005.780sft** Ellip. Ht: **913.436sft** Geoid**12A**

**Iowa South Zone (1402)** Northing: **381828.085sft** Easting: **1057289.273sft**  
Mapping Angle: **-1°23'32"** Combination Scale Factor: **0.999909285**

**laRCS Zone 6** Northing: **6883690.387sft** Easting: **16532997.524sft**  
Mapping Angle: **00° 04' 43"** Combination Scale Factor: **0.999996489**

**Monument Type:** Berntsen Top Security Rod Monument with a 2-1/2" dia. domed survey cap and permanent magnet encased in a white PVC pipe with a NGS style aluminum access cover.



*This document was prepared by Dan Corbin, Inc. on February 8, 2016 for Mills County, Iowa.*