

Mills County, Iowa

Horizontal Datum: **NAD 83(2011)** - Vertical Datum: **NAVD 1988**

Iowa State Plane South Zone (1402)

Iowa Regional Coordinate System, Zone 6 Council Bluffs

US Survey Feet

2016

Point Name: **29**

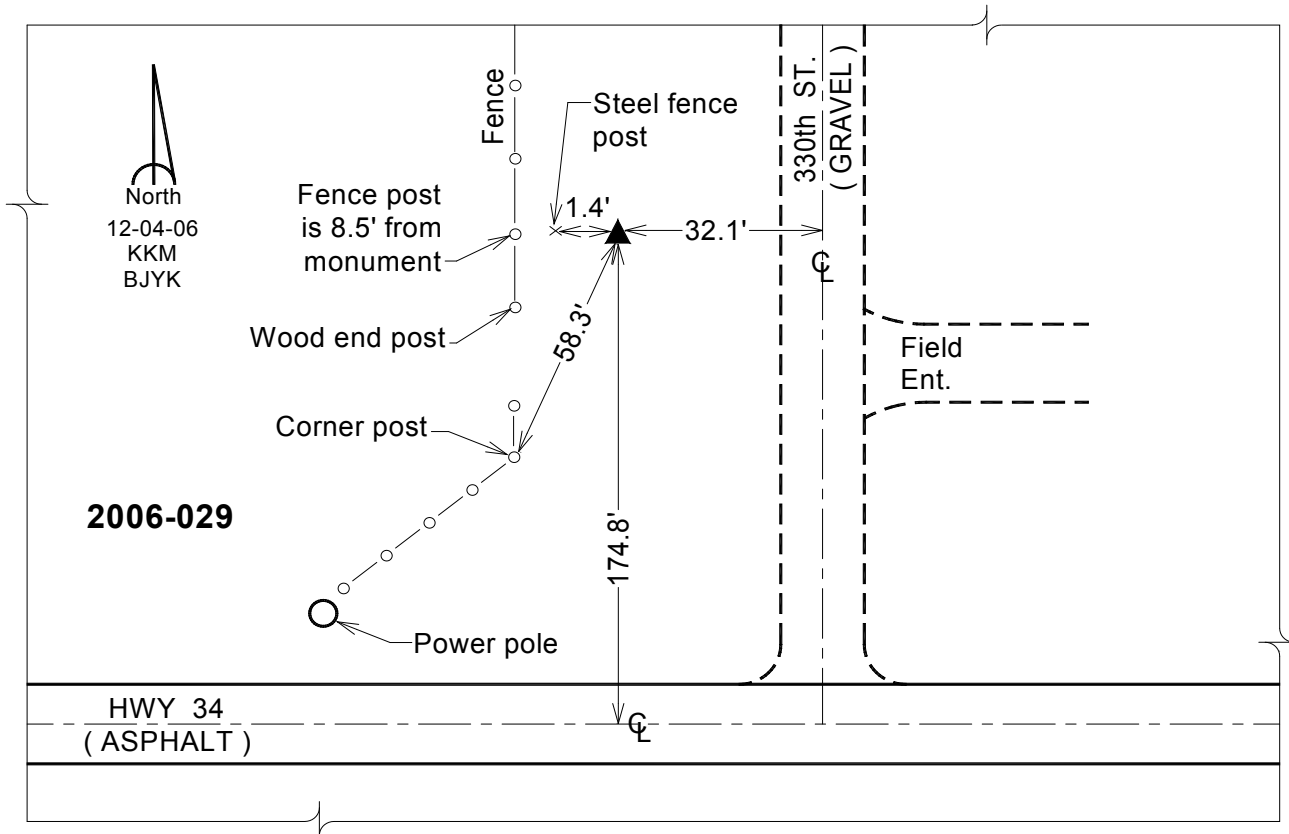
Designation: 2006-029 Mills Co GPS Control Pt.

NAD 83(NA2011) Latitude: **N41°01'52.31415"** Longitude: **W95°33'24.23025"**
NAVD 88 Ortho Height: **1051.292sft** Ellip. Ht: **958.352sft** Geoid12A

Iowa South Zone (1402) Northing: **382405.340sft** Easting: **1073037.552sft**
Mapping Angle: **-1°21'17"** Combination Scale Factor: **0.999907007**

laRCS Zone 6 Northing: **6884671.747sft** Easting: **16548727.185sft**
Mapping Angle: **00° 06' 57"** Combination Scale Factor: **0.999995806**

Monument Type: Berntsen Top Security Rod Monument with a 2-1/2" dia. domed survey cap and permanent magnet encased in a white PVC pipe with a NGS style aluminum access cover.



This document was prepared by Dan Corbin, Inc. on February 8, 2016 for Mills County, Iowa.