

Mills County, Iowa
 Horizontal Datum: **NAD 83(2011)** - Vertical Datum: **NAVD 1988**
 Iowa State Plane South Zone (1402)
 Iowa Regional Coordinate System, Zone 6 Council Bluffs
 US Survey Feet
2016

Point Name: **30**

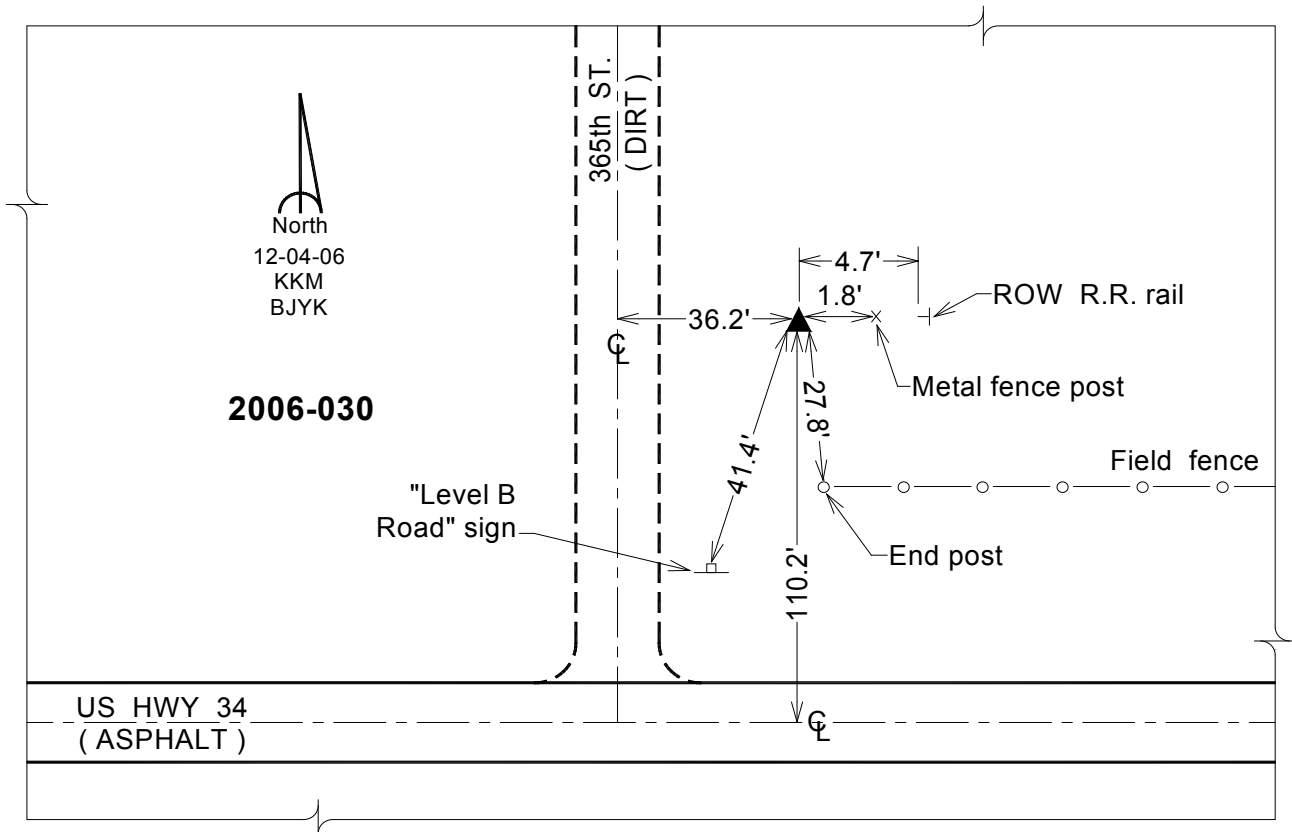
Designation: 2006-030 Mills Co GPS Control Pt.

NAD 83(NA2011) Latitude: **N41°01'52.14935"** Longitude: **W95°29'21.49862"**
 NAVD 88 Ortho Height: **1002.329sft** Ellip. Ht: **908.646sft** Geoid12A

Iowa South Zone (1402) Northing: **381956.066sft** Easting: **1091634.166sft**
 Mapping Angle: **-1°18'37"** Combination Scale Factor: **0.999909381**

laRCS Zone 6 Northing: **6884699.897sft** Easting: **16567330.881sft**
 Mapping Angle: **00° 09' 37"** Combination Scale Factor: **1.000000655**

Monument Type: Berntsen Top Security Rod Monument with a 2-1/2" dia. domed survey cap and permanent magnet encased in a white PVC pipe with a NGS style aluminum access cover.



This document was prepared by Dan Corbin, Inc. on February 8, 2016 for Mills County, Iowa.