

Mills County, Iowa
 Horizontal Datum: **NAD 83(2011)** - Vertical Datum: **NAVD 1988**
 Iowa State Plane South Zone (1402)
 Iowa Regional Coordinate System, Zone 6 Council Bluffs
 US Survey Feet
2016

Point Name: **31**

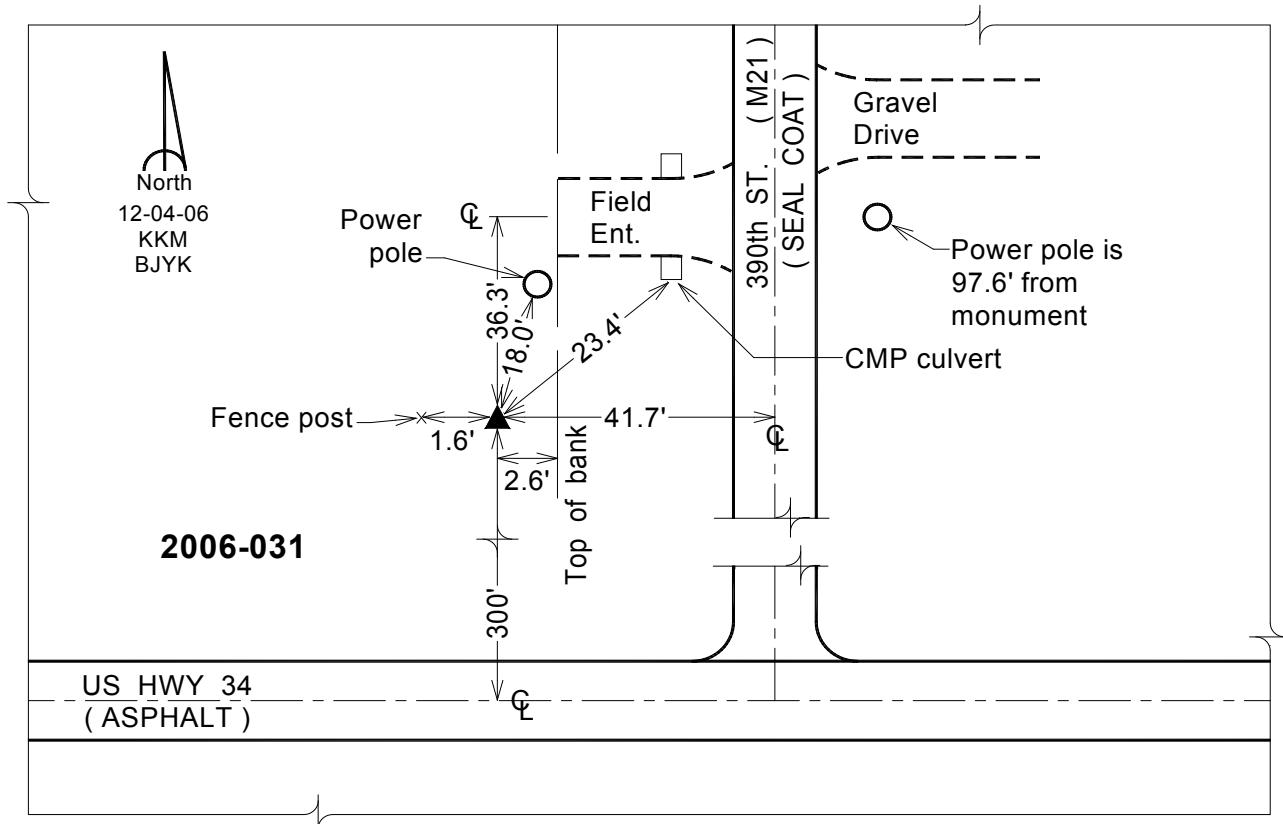
Designation: 2006-031 Mills Co GPS Control Pt.

NAD 83(NA2011) Latitude: **N41°01'53.11527"** Longitude: **W95°26'30.72478"**
 NAVD 88 Ortho Height: **1110.687sft** Ellip. Ht: **1016.537sft** Geoid12A

Iowa South Zone (1402) Northing: **381758.080sft** Easting: **1104720.472sft**
 Mapping Angle: **-1°16'45"** Combination Scale Factor: **0.999904219**

IaRCS Zone 6 Northing: **6884837.813sft** Easting: **16580419.169sft**
 Mapping Angle: **00° 11' 29"** Combination Scale Factor: **0.999997697**

Monument Type: Berntsen Top Security Rod Monument with a 2-1/2" dia. domed survey cap and permanent magnet encased in a white PVC pipe with a NGS style aluminum access cover.



This document was prepared by Dan Corbin, Inc. on February 8, 2016 for Mills County, Iowa.