

**Mills County, Iowa**  
Horizontal Datum: **NAD 83(2011)** - Vertical Datum: **NAVD 1988**  
Iowa State Plane South Zone (1402)  
Iowa Regional Coordinate System, Zone 6 Council Bluffs  
US Survey Feet  
**2016**

Point Name: **32**

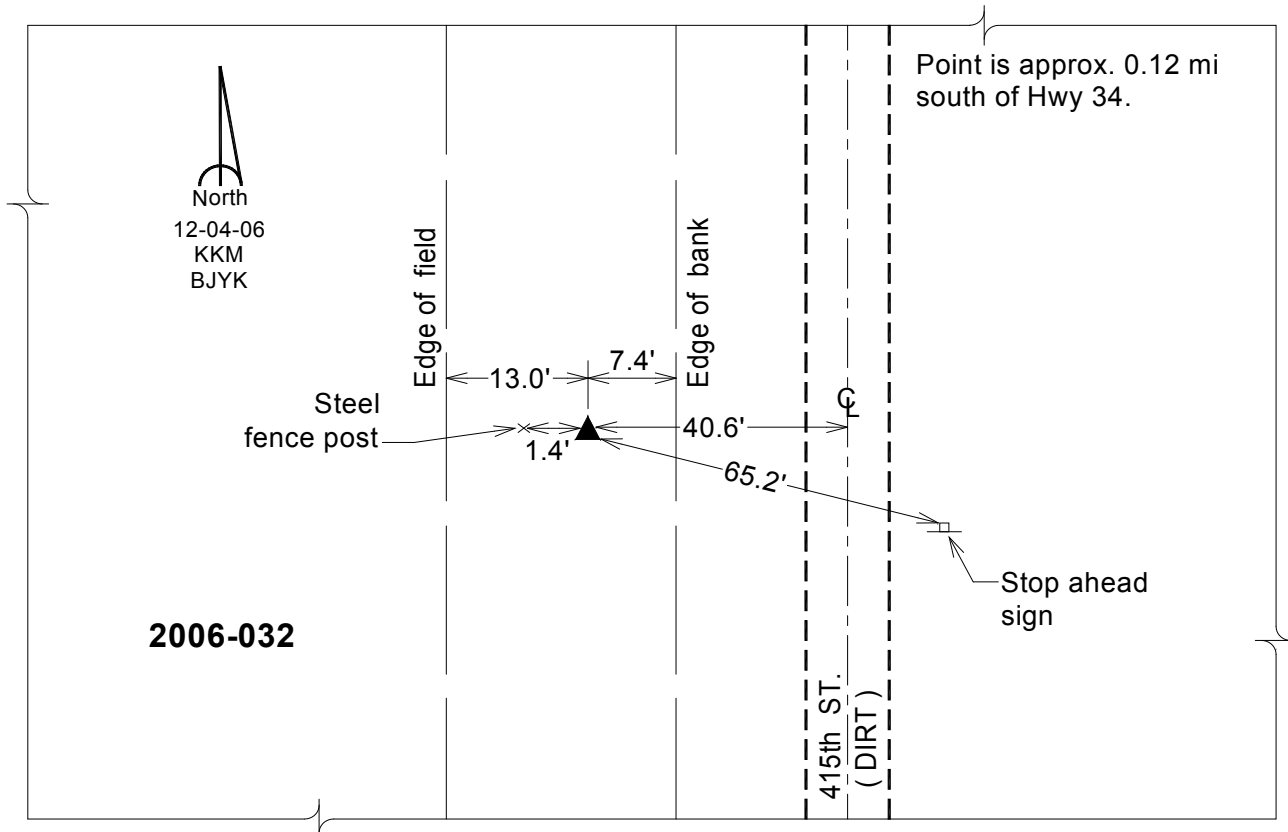
**Designation:** 2006-032 Mills Co GPS Control Pt.

NAD 83(NA2011) Latitude: **N41°01'43.31354"** Longitude: **W95°23'39.06436"**  
NAVD 88 Ortho Height: **1095.638sft** Ellip. Ht: **1000.917sft** Geoid12A

**Iowa South Zone (1402)** Northing: **380476.281sft** Easting: **1117851.030sft**  
Mapping Angle: **-1°14'52"** Combination Scale Factor: **0.999905105**

**laRCS Zone 6** Northing: **6883893.282sft** Easting: **16593579.543sft**  
Mapping Angle: **00° 13' 22"** Combination Scale Factor: **1.000001062**

**Monument Type:** Berntsen Top Security Rod Monument with a 2-1/2" dia. domed survey cap and permanent magnet encased in a white PVC pipe with a NGS style aluminum access cover.



*This document was prepared by Dan Corbin, Inc. on February 8, 2016 for Mills County, Iowa.*